



Ministry of
Tourism, Parks,
Culture and Sport

Parks Service



SASKATCHEWAN
PARKS

**Summer Visitation and Outdoor Recreation
Statistical Report**

TABLE OF CONTENTS

FOREWORD		3
MAP OF SASKATCHEWAN PARKS		4
SUMMARY OF PROVINCIAL PARK VISITATION FOR 2007		5
METHODOLOGY		6
TOTAL VISITS		8
Figure 1:	Provincial Parks Recorded Visits 1993 to 2007	9
Table 1:	Saskatchewan Provincial Parks Estimated Total Visits	10
ENTRY		12
Entry Permit Definitions		13
Figure 2:	Total Entry Permits Issued 2002 to 2007	14
Figure 3:	Transferable Entry Permits Issued 2002 to 2007	14
Figure 4:	Daily Entry Permits Issued 2002 to 2007	15
Figure 5:	Three-Day Permits Issued 2002 to 2007	15
Figure 6:	Weekly Permits Issued from 2002 to 2007	16
Figure 7:	Seniors Free Entry Permits Issued	16
Table 2:	Entry Permits by Park Classification	17
Table 2a:	Senior Entry Pass	20
CAMPING		21
Camping Permit Definitions		22
Figure 8:	Total Camping Permit Days 2002 to 2007	23
Figure 9:	Total Camping Permit Days 1993 to 2007	23
Figure 10:	Total Youth Permit Days 2002 to 2007	24
Figure 11:	Regular and Reservation Camping Permit Days 2002 to 2007	24
Figure 12:	Seasonal and Monthly Camping Permit Days 2002 to 2007	25
Table 3:	Camping Permit Days by Park Classification	25
Table 4:	Provincial Recreation Site Campgrounds – Permit Days	30
Table 5:	Total Reported Camping permit days	32
Table 5a:	May Long Weekend Camping Permit Days	32
Table 5b:	May Long Weekend Compliance Comparison 2006 to 2007	33
Table 6:	Seasonal Camping Program	34
Campfire Permits and Permit Days		35
Table 7:	Campfire Permits Issued, Permit Days	36
PROGRAMS		37
Figure 13:	Total Visits Including Visitor Types for Historic Parks	38
Figure 14:	Comparison 2006 to 2007 of School Group Use	40
Figure 15:	Comparison 2005 to 2006 of Student Use of Programs	40
Figure 16:	Conducted Program Use by Visitor Type	44
Table 8:	Historic Park Interpretive Programs and Participants	39
Table 9:	School/Other Youth Group Programs	41
Table 10:	Programs and Participants by Park Classification	45
LEASES		51
Table 11:	Summer Commercial Leases	52
Table 12:	Campground Leases	53
Table 13:	Cottage Leases	54
APPENDICES		55
Appendix One:	Camper Day Multiplier	56
Appendix Two:	Provincial Parks Rates and Fees for Entry and Camping	57

FOREWORD

This report provides summarized information and park-by-park detail on visitation, entry permits, camping permits, program use and leases in effect in Saskatchewan Provincial Parks and Recreation Sites for the summer of 2007.

The report describes the recorded uses of provincial park land for the 2007 summer operating season, from May 17 (Victoria Day weekend) to September 3 (Labour Day weekend) inclusive. The report also includes camping activity that occurred from mid-April to October 31.

Note: not all visits to provincial parks are recorded. There are 196 discrete parcels of land in the provincial park system, and services are provided to visitors on 150 of them. Visitation statistics are recorded for 35 of the more-visited provincial parks and recreation sites. Camping statistics are recorded for 21 provincial parks and 14 provincial recreation sites. No statistics are recorded for locations with little to no known usage.



- Shield** - Forest, Rock, Water
- Mixed Wood** - Forests
- Grassland & Aspen Parkland** - Prairie

Provincial Park Lands

Provincial Parks and Recreation Sites

Map #	Park	Page #
1	Anglin Lake	6
2	Athabasca Sand Dunes	6
3	Blackstrap	6
4	Bronson Forest	6
5	Buffalo Pound	7
6	Candle Lake	7
7	Chitek Lake	7
8	Clarence-Steepbank Lakes	8
9	Clearwater River	8
10	Crooked Lake	8
11	Cypress Hills	8
12	Danielson	9
13	Douglas	9
14	Duck Mountain	9
15	Echo Valley	10
16	Emma Lake	10
17	Good Spirit Lake	10
18	Greenwater Lake	11
19	Katepwa Point	11
20	Lac La Ronge	11
21	Makwa Lake	12
22	Meadow Lake	12
23	Moose Mountain	13
24	Narrow Hills	13
25	Pike Lake	13
26	Regina Beach	13
27	Rowan's Ravine	14
28	Saskatchewan Landing	14
29	The Battlefords	14
30	Wildcat Hill	15

Provincial Historic Parks

31	Cannington Manor	16
32	Cumberland House	16
33	Fort Carlton	16
34	Fort Pitt	16
35	Last Mountain House	16
36	St. Victor Petroglyphs	17
37	Steele Narrows	17
38	Touchwood Hills Post	17
39	Wood Mountain Post	17

SUMMARY OF PROVINCIAL PARK VISITATION FOR 2007

Visitation was above the five-year average in almost all categories.

Attendance

- 2,712,001 visits were recorded, a 6.9 percent increase from 2006 and 14.3 percent above the five-year average (note: visitation is deemed to be under-estimated; calculations are based on cottage, entry and camping data from 21 locations plus camping data from 14 other locations).

Entry Permits

- 53,242 entry permits were issued, up less than 1 percent from 2006 and 9.8 percent over the five-year average.
- 16,149 free senior entry permits were issued. Entry is free to Saskatchewan residents age 65 and over.
- Daily entry permits issued were down by 2.1 percent from 2006 but 9.5 percent above the five-year average.
- Three-day entry permits issued were down by 5.8 percent from 2006 and 3.3 percent below the five-year average.
- Weekly entry permits issued were down by 4.0 percent from 2006 but 10.7 percent above the five-year average.
- Annual permits issued were up by 19.1 percent from 2006 and 23.3 percent above the five-year average. In 2007 cottage owners were issued annual transferable permits, replacing the practice of providing them with annual park-specific permits.

Campground Use

- 341,937 camping permit days were recorded in 2007, up 6.6 percent over 2006 and 14.4 percent above the five-year average.
- Of these permit days:
 - 14,071 student/youth permit days were recorded, down 2.9 percent from 2006 and down 4.6 percent decrease from the five-year average;
 - 89,375 permit days were calculated for seasonal camping, up 5.4 percent from 2006 and up 13.7 percent from the five-year average; and
 - 12,420 permit days were calculated for monthly camping, up 19.7 percent from 2006 and up 113.2 percent from the five-year average.

Program Use

- 130,776 participated in programs, up 13.9 percent from 2006.
- 459 school/youth groups and 14,597 students/youth participated in interpretive programs. The number of groups was down less than 1 percent from 2006; the number of students was up 10 percent.

METHODOLOGY

Data Sources

Visit estimates are derived from permit sales, supplemented by vehicle count information and actual person counts where permits are not sold. Permit sales information is collected from cash registers and the Reservation Operating System, and reported through the Saskatchewan Environment Financial Management System Revenue Module. The system records all transactions for visitor use in provincial parks, including one recreation site that charges entry fees (Emma Lake).

Calculations

Where entry permits are sold, visits are calculated by adding

- (1) **Total visitor days for day users**
plus
- (2) **Total visitor days for campers**
plus
- (3) **Total visitor days for cottages**
plus
- (4) **Total visitor days for bus visitors**

(1) Day Use Visitor Days

- number of daily entry permits x 1
- number of three-day entry permits x 3
- number of weekly entry permits x 7
- number of transferable entry permits x 15, less total camping permit days, plus seasonal camping permit days
- note: to avoid double counting campers who require an entry permit, camping permit days (see below, under camping visitor days) are subtracted from the day use data; however, because seasonal campers do not have to purchase an entry permit, their permit days are added back into the total
- the average group size is estimated at 3, per The 1990 Visitor Survey and The 1990 Entry Gate Survey

(2) Camping Visitor Days

- camping permit days x average size camping group (varies by campground as shown in **Appendix 1**, derived from 2003 campground use data) school groups
- camping permit days: reflects number of campsites used in any campground; includes regular, reservation, self-registration, monthly and seasonal
- calculation of seasonal permit days:
 - full seasonal permits: number of permits x 110 days
 - pro-rated seasonal permits: number of permits x 55 days

(3) Cottage Visitor Days

- Number of cottages x 40 visit days per season x 3 people per cottage

(4) Bus Visitor Days

- number of bus permits issued x 40 persons per bus

Where entry permits are not sold, at five locations, visits are estimated through a combination of camper visitor days, cottage visitor days, vehicle counters and observations of past use in comparison to the current year.

At four provincial historic parks, visitation is determined by actual person counts as recorded on hand counters.

Entry Permit Data

Information was collected for each of the nine types of entry permit issued, from the Saskatchewan Environment's, Financial Management System - Revenue Module.

Camping Permit Data

Camping statistics are obtained primarily from camping permits issued by field staff through the Reservation Operating System. Information is obtained from the Saskatchewan Environment's, Financial Management System - Revenue Module.

Self-registration camping permit days

The total self-registration camping revenue for a park or site ÷ daily registration fee, regular or discount where appropriate (excluding GST). Given that this method depends on the accuracy of the camper's self declared fees, that data may not be reliable and consistent. However, it has the advantage of providing information from parks that are known to have visitation, but have no entry or campground office staff to record use, and so would otherwise not be included.

Program Statistics

Program use data is gathered by actual person counts at provincial historic parks and by estimates of program participants for the remaining programs offered throughout the provincial parks system. Given the collection methodologies for program data, only data for provincial historic parks and school programming can be considered reliable and consistent. Program data for other park locations is an indication of program use.

Total Visits



PROVINCIAL PARKS SYSTEM YEAR OVER YEAR VISITS

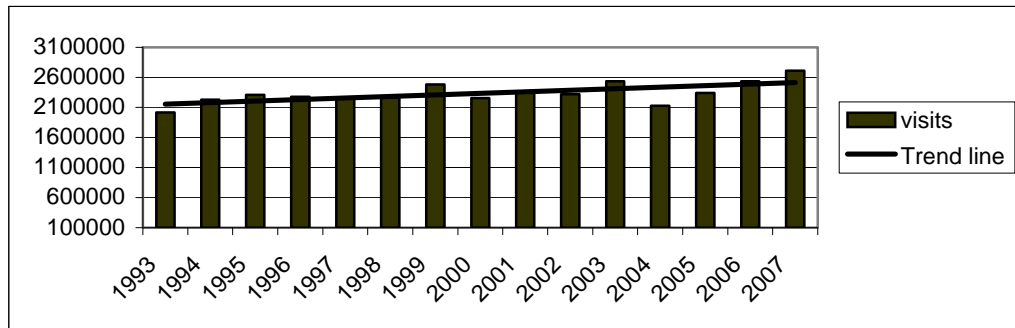
In 2007, approximately 2,712,001 visits occurred at the 36 provincial parks and recreation sites where park visits have traditionally been tracked.

Note: This figure does not include visits to:

- recreation sites, except Emma Lake;
- any of the historic parks and sites that do not provide conducted programs; and
- wilderness parks.

For example, visits by campers in recreation sites (other than Emma Lake) that have camping permit records are not included; the estimated 100,000 plus visits to Regina Beach Recreation Site are not included.

Figure 1: Provincial Parks Recorded Visits 1993 to 2007



As shown in **Table 1**, most parks saw increases in visitation with only one park showing a decrease (less than 2 percent). The greatest increase in use occurred at Blackstrap and The Battlefords. Each of these parks saw an increase of over 20% from 2006. Improved water levels at The Battlefords since 2006 have continued to bring tourists back.

TABLE 1: Saskatchewan Provincial Parks - Estimated Total Visits – April to September

Location	2002	2003	2004	2005	2006	2007	% Change 2006/2007	5 Year Avg 2002-2006	% Change 2007/Five Year Avg
Based on Permit Analysis									
Blackstrap	54,943	56,237	37,835	43,500	41,067	50,989	24.2%	46,716	9.1%
Buffalo Pound	88,927	97,895	72,377	78,966	78,901	88,356	12.0%	83,413	5.9%
Candle Lake	59,130	65,391	54,956	54,288	62,544	63,559	1.6%	59,262	7.3%
Cypress Hills	189,253	204,857	173,735	188,791	194,668	203,477	4.5%	190,261	6.9%
Douglas	52,802	54,265	35,073	40,038	44,543	43,753	-1.8%	45,344	-3.5%
Duck Mountain	189,572	181,155	170,449	178,685	194,123	210,071	8.2%	182,797	14.9%
Echo Valley	83,746	103,126	78,263	93,250	105,040	118,938	13.2%	92,685	28.3%
Emma Lake	38,550	41,747	35,303	38,335	38,382	40,843	6.4%	38,463	6.2%
Good Spirit Lake	85,981	96,058	76,576	87,754	98,051	111,132	13.3%	88,884	25.0%
Greenwater Lake	125,998	123,671	106,689	110,230	128,623	130,153	1.2%	119,042	9.3%
Makwa Lake	65,374	76,211	69,108	78,283	77,157	85,937	11.4%	73,227	17.4%
Meadow Lake	240,304	281,224	204,506	228,569	250,623	267,549	6.8%	241,045	11.0%
Moose Mountain	201,532	226,027	198,726	214,686	222,171	235,677	6.1%	212,628	10.8%
Pike Lake	146,855	158,960	125,596	142,177	151,326	160,554	6.1%	144,983	10.7%
Rowan's Ravine	93,783	93,007	78,616	94,515	103,300	115,309	11.6%	92,644	24.5%
Saskatchewan Landing	91,017	107,009	91,110	100,119	116,419	128,740	10.6%	101,135	27.3%
The Battlefords	106,696	90,555	63,516	85,690	111,554	136,384	22.3%	91,602	48.9%
Total	1,914,463	2,057,395	1,672,434	1,857,876	2,018,491	2,191,421	8.6%	1,904,132	15.1%
Based on Estimates									
Crooked Lake	47,500	47,000	40,000	38,500	40,000	40,000	0.0%	42,600	-6.1%
Danielson	81,347	94,459	96,000	118,000	140,000	140,000	0.0%	105,961	32.1%
Katepwa Point	90,000	99,000	93,000	95,000	102,000	102,000	0.0%	95,800	6.5%
Lac La Ronge	122,000	123,500	114,000	123,000	107,000	107,000	0.0%	117,900	-9.2%
Narrow Hills	46,608	54,726	48,000	47,000	54,000	54,000	0.0%	50,067	7.9%
Total	387,455	418,685	391,000	421,500	443,000	443,000	0.0%	412,328	7.4%

TABLE 1: Saskatchewan Provincial Parks - Estimated Total Visits – April to September (Continued)

Location	2002	2003	2004	2005	2006	2007	% Change 2006/2007	5 Year Avg 2002-2006	% Change 2007/Five Year Avg
Based on Hand Counters									
Cannington Manor	3,511	4,146	4,158	4,494	3,124	3,994	27.8%	3,887	2.8%
Fort Carlton	10,190	9,531	8,803	8,971	9,108	10,114	11.0%	9,321	8.5%
Last Mountain House	1,573	1,171	972	1,035	919	952	3.6%	1,134	-16.0%
Wood Mountain Post	1,506	1,456	2,100	2,069	2,292	1,770	-22.8%	1,885	-6.1%
Total	16,780	16,304	16,033	16,569	15,443	16,830	9.0%	16,226	3.7%
Other Locations	36405	45,990	44,865	43,355	60,750	60,750	0.0%	46,273	31.3%
GRAND TOTAL	2,318,698	2,538,374	2,124,332	2,339,300	2,537,684	2,712,001	6.9%	2,371,678	14.3%

Entry



PROVINCIAL PARK ENTRY PERMIT DEFINITIONS

All vehicles entering developed portions of provincial parks are required to have a valid entry permit. For increased convenience to the public, transferable annual entry permits are available for purchase at department offices outside provincial parks.

Transferable Annual Entry Permit

A permit issued upon payment to allow vehicle entry to all provincial parks and recreation sites from April to March 31 of the following year. This permit may be transferred to any vehicle and must be displayed on the inside of a window on the left hand side of the vehicle.

Daily Entry Permit

Permit issued upon payment to allow vehicle entry to a provincial park or recreation site for a one-day period. This permit is valid until 2 pm of the date written on the permit, and must be affixed to the inside of a window on the left hand side of the vehicle.

Three-Day Permit

A permit issued upon payment to allow vehicle entry to a provincial park or recreation site for a three-day period. This permit is valid until 2 pm of the date written on the permit, and must be affixed to the inside of a window on the left hand side of the vehicle.

Weekly Permit

A permit issued upon payment to allow vehicle entry to a provincial park or recreation site for a seven-day period. This permit is valid until 2 pm of the date written on the permit, and must be affixed to the inside of the window on the left hand side of the vehicle.

One-Hour Permit

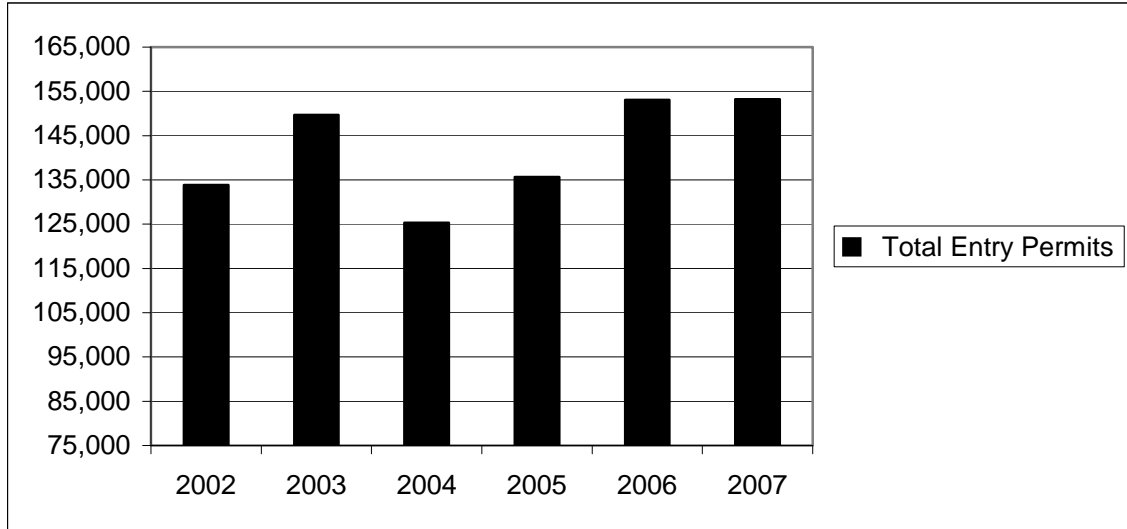
A courtesy permit issued to a driver of a vehicle who delivers goods or services to a provincial park; to allow a driver to transport persons to and from institutional camps, day-use areas or recreation programs within a provincial park or recreation site; for courtesy access to the park for traditional resource use activities. The permit does not allow use of park facilities.

This report does not include statistics on one-hour permits.

ENTRY PERMIT STATISTICS

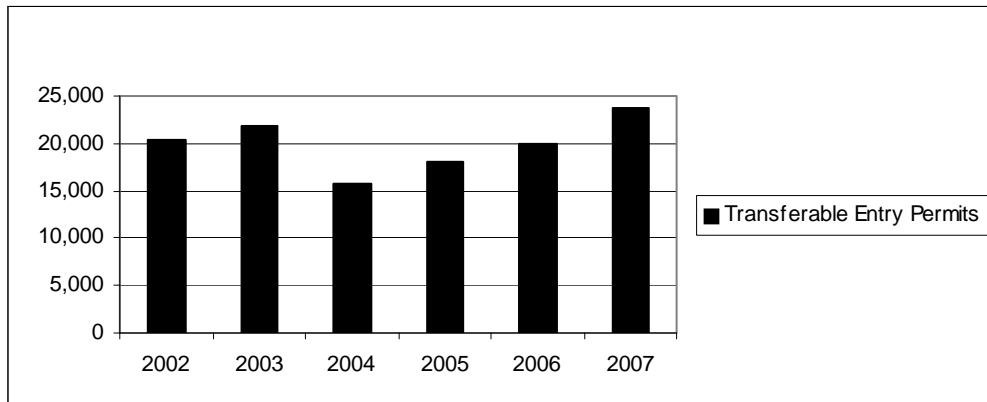
As shown in **Table 2**, 153,242 entry permits were issued in 2007, up less than 1 percent from 2006 but still 9.8 percent above the five-year average.

Figure 2: Total Entry Permits Issued 2002 to 2007



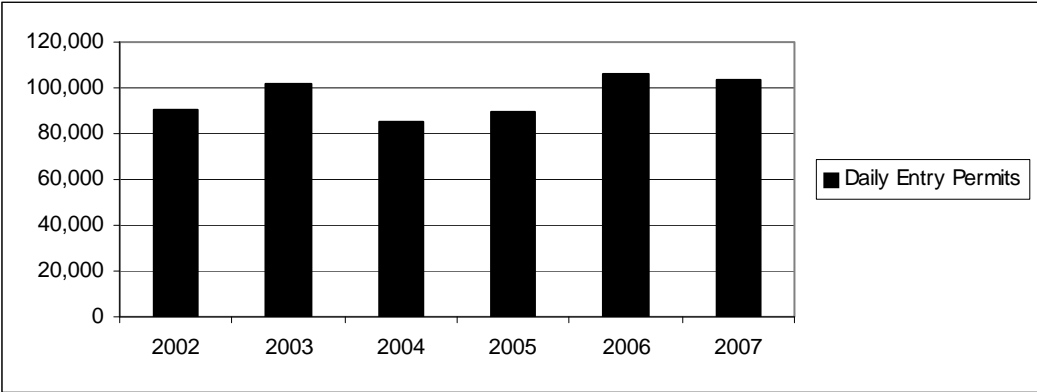
Transferable entry permits issued increased by 19.1 percent from 2006 and by 23.3 percent from the five-year average. A portion of this increase may be attributed to the cessation of selling park specifics to cottage owners.

Figure 3: Transferable (Annual) Entry Permits Issued 2002 to 2007



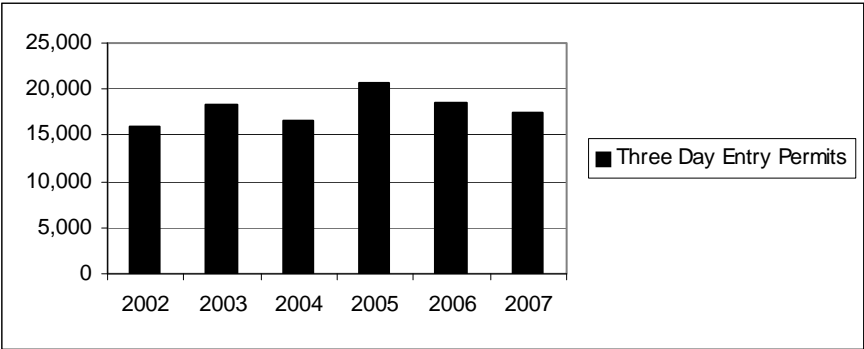
Daily entry permits issued were down 2.1 percent from 2006 but still 9.5 percent above the five-year average.

Figure 4: Daily Entry Permits Issued 2002 to 2007



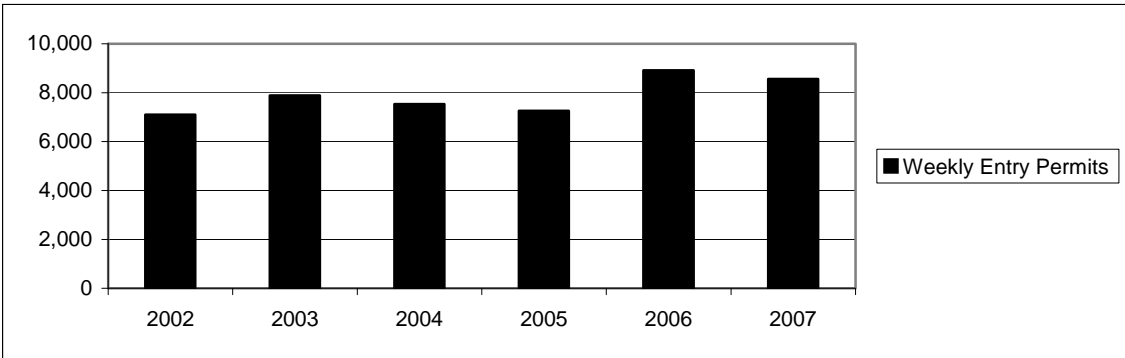
Three-day entry permits were down by 5.8 percent over 2006 and were 3.3 percent below the five-year average.

Figure 5: Three-Day Entry Permits Issued 2002-2007



Weekly entry permits issued decreased by 4.0 percent from 2006 but still show a 10.7 percent increase from the five-year average.

Figure 6: Weekly Entry Permits Issued From 2002 to 2007



In 2007, free entry for Saskatchewan residents 65 and older was continued. 16,149 free seniors' permits were issued. Of these, 9,328 were dailies; 5,698 were annuals; 704 were three-day entry permits and 419 were weekly permits.

Figure 7: Seniors' Free Entry Permits Issued

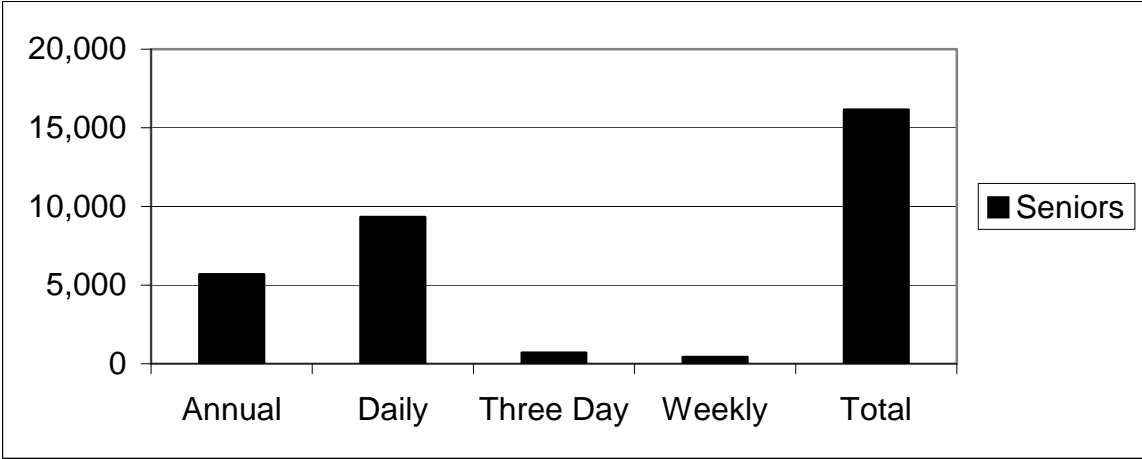


Table 2: Entry Permits Issued by Park Classification

	2002	2003	2004	2005	2006	2007	Percent change 2007 from 2006	Previous five year average 2002-2006	Percent change 2007 from five year average
NATURAL ENVIRONMENT PARKS									
Cypress Hills									
Daily	11,228	11,778	10,895	10,916	11,908	12,105	1.7%	11,345	6.7%
Three Day	2,998	3,674	3,493	3,892	3,592	3,553	-1.1%	3,530	0.7%
Weekly	1,248	1,401	1,328	1,246	1,440	1,446	0.4%	1,333	8.5%
Transferable	1,450	1,551	1,120	1,362	1,376	1,564	13.7%	1,372	14.0%
Sub Total	16,924	18,404	16,836	17,416	18,316	18,668	1.9%	17,579	6.2%
Douglas									
Daily	2,218	2,472	2,252	2,195	2,626	2,263	-13.8%	2,353	-3.8%
Three Day	403	452	527	616	594	542	-8.8%	518	4.6%
Weekly	167	159	196	184	176	206	17.0%	176	16.8%
Transferable	558	566	367	444	506	508	0.4%	488	4.1%
Sub Total	3,346	3,649	3,342	3,439	3,902	3,519	-9.8%	3,536	-0.5%
Duck Mountain									
Daily	7,003	6,832	6,033	5,775	6,943	6,480	-6.7%	6,517	-0.6%
Three Day	1,236	1,157	1,076	1,477	1,157	1,218	5.3%	1,221	-0.2%
Weekly	516	480	504	484	729	780	7.0%	543	36.6%
Transferable	1,615	1,568	1,198	1,298	1,433	1,721	20.1%	1,422	21.0%
Sub Total	10,370	10,037	8,811	9,034	10,262	10,160	-0.6%	9,703	5.1%
Good Spirit Lake									
Daily	3,847	4,829	3,548	3,927	5,833	5,421	-7.1%	4,397	48.8%
Three Day	491	508	462	675	664	661	-0.5%	560	18.0%
Weekly	214	224	215	198	251	277	10.4%	220	25.7%
Transferable	801	925	599	706	834	1,140	36.6%	773	47.5%
Sub Total	5,353	6,486	4,824	5,506	7,582	7,499	-1.1%	5,950	26.0%
Greenwater Lake									
Daily	5,407	4,946	4,818	4,342	4,926	4,407	-10.5%	4,888	36.2%
Three Day	1,114	1,151	1,090	1,380	1,148	946	-17.6%	1,177	-19.6%
Weekly	544	540	468	470	648	482	-25.6%	534	-9.7%
Transferable	1,340	1,307	1,020	1,038	1,365	1,544	13.1%	1,214	27.2%
Sub Total	8,405	7,944	7,396	7,230	8,087	7,379	-8.8%	7,812	-5.5%
Makwa Lake									
Daily	1,945	2,186	2,165	1,941	2,002	1,627	-18.7%	2,048	-20.5%
Three Day	473	594	555	618	538	417	-22.5%	556	-24.9%
Weekly	321	374	390	379	413	397	-3.9%	375	5.8%
Transferable	720	823	688	815	768	928	20.8%	763	21.7%
Sub Total	3,459	3,977	3,798	3,753	3,721	3,279	-11.9%	3,742	-12.4%
Meadow Lake									
Daily	5,272	5,825	4,821	5,055	6,414	6,631	3.4%	5,477	21.1%
Three Day	1,857	2,379	2,143	2,306	2,243	2,093	-6.7%	2,186	-4.2%
Weekly	1,843	2,154	2,074	1,896	2,017	2,106	4.4%	1,997	5.5%
Transferable	2,134	2,559	1,629	2,068	2,370	2,617	10.4%	2,152	21.6%
Sub Total	11,106	12,917	10,667	11,325	13,044	13,447	3.1%	11,812	13.8%

Table 2: Entry Permits Issued by Park Classification (continued)

	2002	2003	2004	2005	2006	2007	Percent change 2007 from 2006	Previous five year average 2002-2006	Percent change 2007 from five year average
Moose Mountain									
Daily	8,759	11,286	9,313	8,851	11,204	10,505	-6.2%	9,883	6.3%
Three Day	2,257	2,859	2,187	2,779	2,211	1,925	-12.9%	2,459	-21.7%
Weekly	495	592	533	490	605	551	-8.9%	543	1.5%
Transferable	1,632	1,789	1,386	1,576	1,677	2,040	21.6%	1,612	26.6%
Sub Total	13,143	16,526	13,419	13,696	15,697	15,021	-4.3%	14,496	3.6%
Narrow Hills									
Daily	759	759	483	414	452	401	-11.3%	573	-30.1%
Three Day	326	270	205	228	227	202	-11.0%	251	-19.6%
Weekly	124	135	92	85	124	107	-13.7%	112	-4.5%
Transferable	384	436	170	161	286	342	19.6%	287	3.7%
Sub Total	1,593	1,600	950	888	1,089	1,052	-3.4%	1,224	-14.1%
Saskatchewan Landing									
Daily	3,924	4,975	4,547	4,675	6,924	6,005	-13.3%	5,009	19.9%
Three Day	463	607	531	725	819	779	-4.9%	629	23.8%
Weekly	132	237	208	230	370	372	0.5%	235	58.0%
Transferable	1,004	1,274	1,081	1,168	1,353	1,616	19.4%	1,176	37.4%
Sub Total	5,523	7,093	6,367	6,798	9,466	8,772	-7.3%	7,049	24.4%
RECREATION PARKS									
Blackstrap									
Daily	4,771	5,023	4,091	4,737	4,824	5,206	7.9%	4,689	11.0%
Three Day	122	163	134	197	149	161	8.1%	153	5.2%
Weekly	11	27	30	32	35	23	-34.3%	27	-14.8%
Transferable	838	794	469	542	502	655	30.5%	629	4.1%
Sub Total	5,742	6,007	4,724	5,508	5,510	6,042	9.7%	5,498	9.9%
Buffalo Pound									
Daily	5,656	6,561	5,271	5,903	6,176	5,615	-9.1%	5,913	-5.0%
Three Day	341	351	362	441	503	393	-21.9%	400	-1.7%
Weekly	122	150	114	153	171	165	-3.5%	142	16.2%
Transferable	1,095	1166	769	843	785	1,025	30.6%	932	10.0%
Sub Total	7,214	8,228	6,516	7,340	7,635	7,198	-5.7%	7,387	-2.6%
Candle Lake									
Daily	2,348	2,541	2,177	2,438	2,995	2,610	-12.9%	2,500	4.4%
Three Day	660	628	643	728	694	616	-11.2%	671	-8.1%
Weekly	240	288	272	281	366	251	-31.4%	289	-13.3%
Transferable	632	703	516	476	590	738	25.1%	583	26.5%
Sub Total	3,880	4,160	3,608	3,923	4,645	4,215	-9.3%	4,043	4.2%
Crooked Lake									
Daily	705	733	536	592	622	669	7.6%	638	4.9%
Three Day	109	117	102	156	129	98	-24.0%	123	-20.1%
Weekly	28	24	20	18	21	23	9.5%	22	3.6%
Transferable	162	157	72	92	111	180	62.2%	119	51.5%
Sub Total	1,004	1,031	730	858	883	970	9.9%	901	7.6%

Table 2: Entry Permits Issued by Park Classification (continued)

	2002	2003	2004	2005	2006	2007	Percent change 2007 from 2006	Previous five year average 2002-2006	Percent change 2007 from five year average
Danielson									
Daily	811	1,071	955	992	1,062	1,198	12.8%	978	22.5%
Three Day	110	129	109	183	141	127	-9.9%	134	-5.5%
Weekly	25	23	26	18	47	36	-23.4%	28	29.5%
Transferable	298	321	246	279	287	399	39.0%	286	39.4%
Sub Total	1,244	1,544	1,336	1,472	1,537	1,760	14.5%	1,427	23.4%
Echo Valley									
Daily	3,051	3,764	3,533	4,024	4,262	4,458	4.6%	3,727	19.6%
Three Day	364	440	499	624	579	578	-0.2%	501	15.3%
Weekly	95	91	98	98	104	135	29.8%	97	38.9%
Transferable	694	792	532	690	920	1,185	28.8%	726	63.3%
Sub Total	4,204	5,087	4,662	5,436	5,865	6,356	8.4%	5,051	25.8%
Pike Lake									
Daily	10,769	13,363	9,985	11,866	13,798	14,683	6.4%	11,956	22.8%
Three Day	655	890	803	1091	963	934	-3.0%	880	6.1%
Weekly	248	258	310	354	458	444	-3.1%	326	36.4%
Transferable	1,463	1,471	998	1,136	1,122	1,344	19.8%	1,238	8.6%
Sub Total	13,135	15,982	12,096	14447	16,341	17,405	7.0%	14,400	20.9%
Rowan's Ravine									
Daily	3,099	3,666	2,918	3,374	3,628	3,633	0.1%	3,337	8.9%
Three Day	444	475	477	734	536	543	1.3%	533	1.8%
Weekly	122	178	120	98	198	200	1.0%	143	39.7%
Transferable	746	727	470	681	814	1,014	24.6%	688	47.5%
Sub Total	4,411	5,046	3,985	4,887	5,176	5,390	4.1%	4,701	14.7%
The Battlefords									
Daily	6,586	6,505	4,634	5,349	7,060	7,763	10.0%	6,027	28.8%
Three Day	917	707	558	892	969	1,017	5.0%	809	25.8%
Weekly	231	168	124	181	364	364	-8.0%	214	56.8%
Transferable	1,159	948	638	907	1,163	1,545	32.8%	963	60.4%
Sub Total	8,893	8,328	5,954	7,329	9,556	10,660	11.6%	8,012	33.1%
RECREATION SITES									
Emma Lake									
Daily	1,977	2,302	2,097	2,130	1,955	1,748	-10.6%	2,092	-16.5%
Three Day	390	538	481	647	451	404	-10.4%	501	-19.4%
Weekly	222	238	230	205	214	175	-18.2%	222	-21.1%
Transferable	432	431	318	315	370	430	16.2%	373	15.2%
Sub Total	3,021	3,509	3,126	3,297	2,990	2,757	-7.8%	3,189	-13.5%
OTHER LOCATIONS									
Daily	263	288	314	252	242	212	-12.4%	272	-22.0%
Three Day	202	208	228	230	165	194	17.6%	207	-6.1%
Weekly	153	143	176	155	169	143	-15.4%	159	-10.2%
Transferable	1253	1505	1483	1458	1,222	1105	-9.6%	1,384	-20.2%
Sub Total	1,871	2,144	2,201	2,095	1798	1654	-8.0%	2,022	-18.2%
"Other locations" adjusted to reflect vendor sales which were omitted in past reports.									

Table 2: Entry Permits Issued by Park Classification (continued)

TOTAL PARK ENTRY PERMITS ISSUED									
	2002	2003	2004	2005	2006	2007	Percent change 2007 to 2006	Previous five year average 2002-2006	Percent change 2007 to five year average
Daily									
Three Day	90,398	101,705	85,386	89,748	105,856	103,637	-2.1%	94,619	9.5%
Weekly	15,932	18,297	16,665	20,619	18,472	17,401	-5.8%	17,997	-3.3%
Transferable	7,101	7,884	7,528	7,255	8,920	8,564	-4.0%	7,738	10.7%
	20,410	21,813	15,769	18,055	19,854	23,640	19.1%	19,180	23.3%
Total	133,841	149,699	125,348	135,677	153,102	153,242	0.1%	139,533	9.8%

Table 2a: Senior Entry Pass

	Daily	Three Day	Weekly	Annual	Total
Battlefords	756			520	1,276
Blackstrap	245	4	1	51	301
Buffalo Pound	486	30	25	215	756
Candle Lake	215	5	2	313	535
Crooked Lake	97	11	3	53	164
Cypress Hills	1,171	122	74	205	1,572
Danielson	77	14	3	95	189
Douglas	190	32	13	45	280
Duck Mountain	525	49	42	530	1,146
Echo Valley	242	11	4	329	586
Emma - Murray Point	107	0	2	162	271
Good Spirit	746	26	9	394	1,175
Greenwater	623	110	55	679	1,467
Meadow Lake - Dorintosh	179	75	35	274	563
Meadow Lake - Pierceland	36	5	8	174	223
Makwa/Loon	49	10	8	196	263
Moose Mountain	1,537	114	53	559	2,263
Narrow Hills	5	0	1	132	138
Pike Lake	965	24	42	201	1,232
Rowan's Ravine	286	9	13	283	591
Sask Landing	791	53	26	288	1,158
Total Issued	9,328	704	419	5,698	16,149

CAMPING



CAMPING PERMIT DEFINITIONS

Camping facilities are available at all provincial natural environment, recreation and wilderness parks with the exception of Katepwa Point, which is designed for day-use activity. Most recreation sites also offer camping opportunities to the public.

Regular Permit

Issued to an individual or group directly upon payment for a campsite at any provincial park or recreation site.

Reservation Permit

Issued to a camper who uses the reserve-a-site program to guarantee a campsite in advance for a specified date.

Self-Registration Permit

The onus is placed upon the camper to register and pay the prescribed fee for the use of a campsite at a self-registration station. Park's staff carry out checks to ensure compliance with proper procedure.

Seasonal Permit

Issued to allow an individual to use a designated seasonal site for the entire summer.

Monthly Permit

Issued to allow an individual to use a designated monthly site for a 30-day period of time.

Permit Days

Reflects the number of campsites used in any campground. Regular and reservation permit days are derived from the Reservation Operating System and Revenue Module. Self-registration permit days are estimated for each individual provincial park or recreation site by dividing the total revenue earned by a weighted fee based upon the relative proportion of available site categories.

Campsite Designations

- service centre; electric and non-electric
- no service centre; electric and non-electric

CAMPING PERMIT STATISTICS

A total of 341,937 camping permit days were recorded in 2007, an increase of 6.6 percent over 2006 and a 14.4 percent increase over the five-year average. Camping as shown in **Figure 8**, is the highest in the last six years and as shown in **Figure 9**, it is the highest in 15 years.

Figure 8: Total Camping Permit Days 2002 to 2007

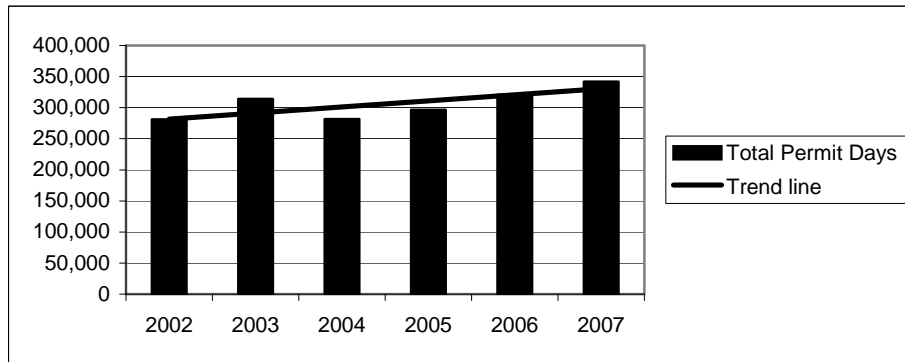
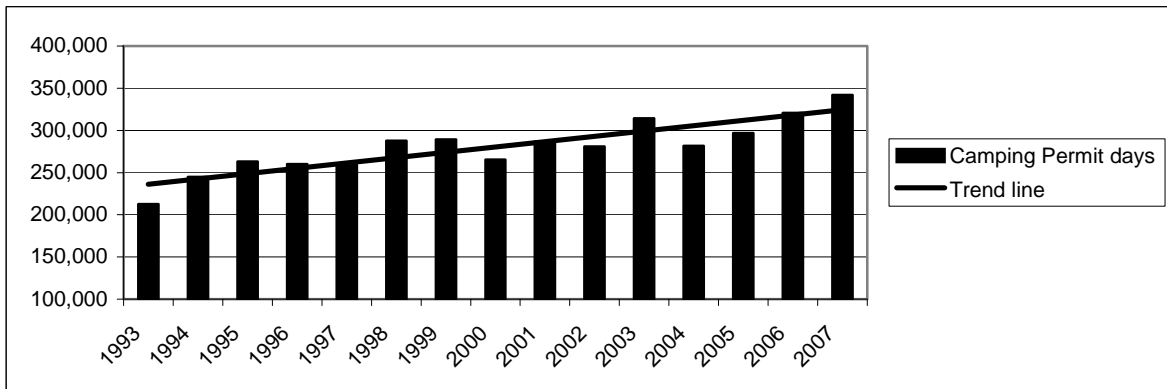
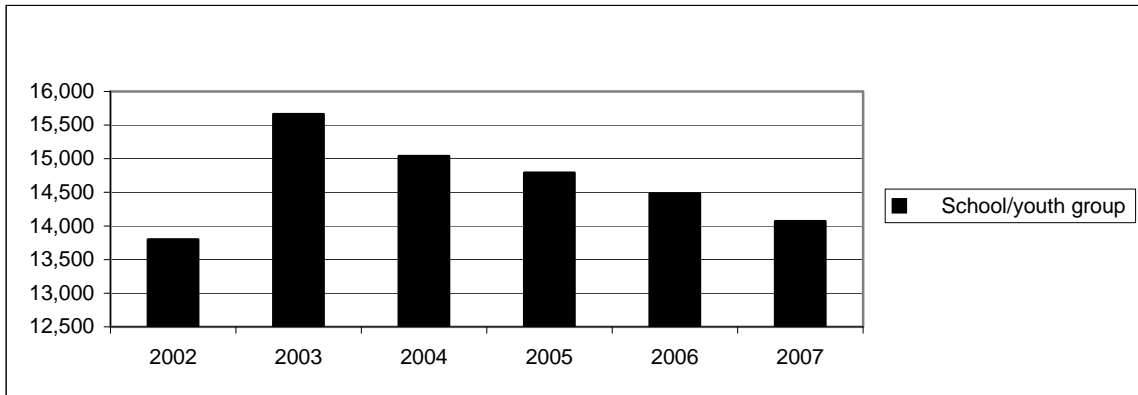


Figure 9: Total Camping Permit Days 1993 to 2007



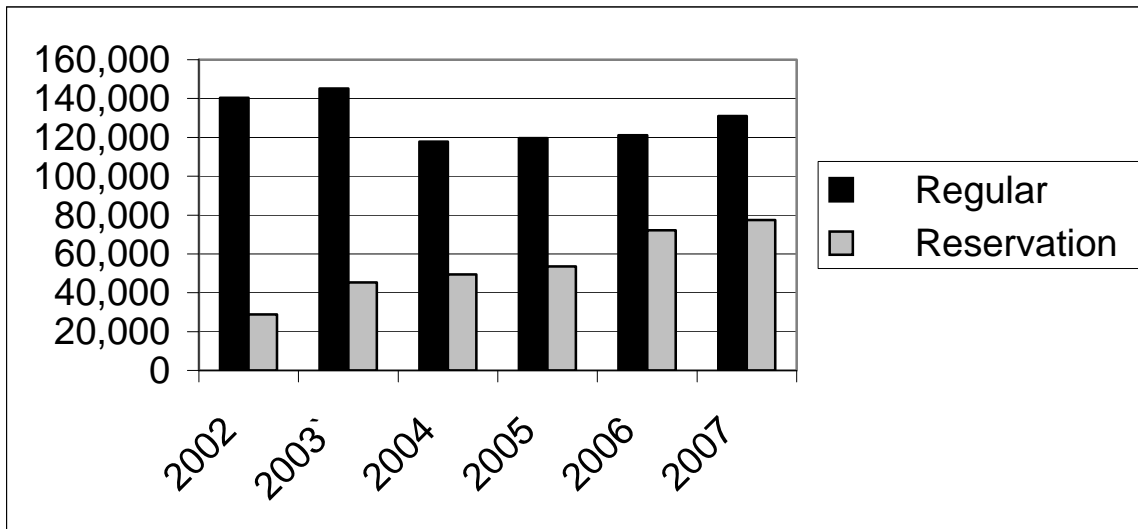
Students or youth enjoyed 14,071 permit days in Provincial Parks in 2007. School or youth permits issued decreased by 2.9 percent from 2006 and was 4.6 percent below the five-year average. As **Figure 10** illustrates, student camping has been gradually decreasing since 2003.

Figure 10: Total School/Youth Permit Days 2002 to 2007



As illustrated by **Figure 11** the use of advanced registration of campsites is increasing. There was a 7.3 percent increase in advanced registration over 2006 and a 55.4 percent increase over the five-year average for reservations. Regular camping, which includes group, economy and walk-in camping, increased from 2006 by 8.2 percent.

Figure 11: Regular and Reservation Camping Permit Days 2002-2007



As illustrated by **Figure 12**, seasonal camping remains popular and monthly camping is on the increase.

Figure 12: Seasonal and Monthly Camping Permit Days 2002-2007

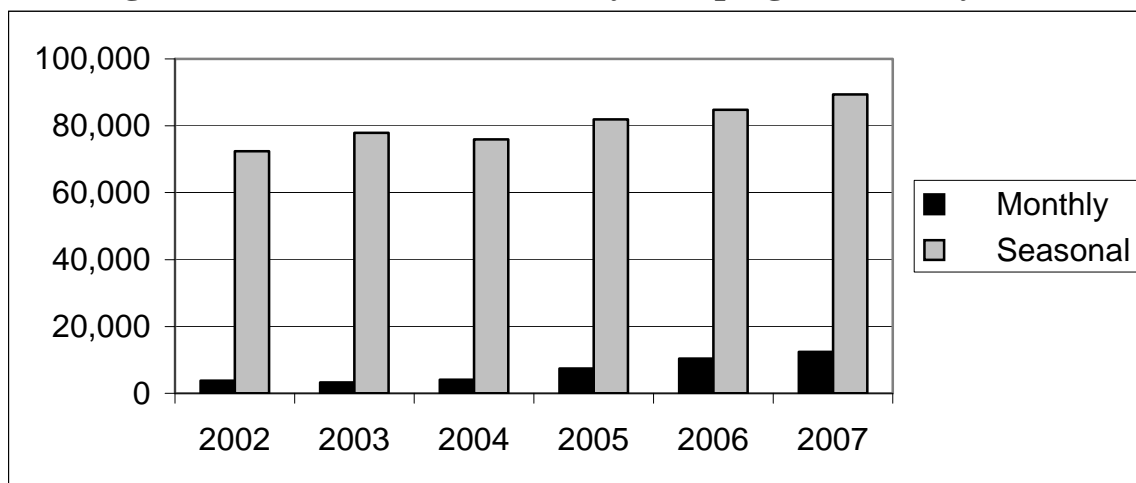


Table 3 provides a breakdown of camping permit days by Provincial Park. Only four Provincial Parks had fewer camping permit days in 2007 than in 2006. Lac La Ronge was down 9.5 percent from 2006 and 19.3 percent from the five-year average. Candle Lake was down 12.5 percent from 2006 and 15.2 percent from the five-year average. Pike Lake was down 6.2 percent from 2006 and also down 1.7 percent from the five-year average. Rowan’s Ravine was down 4.3 percent from 2006 but surpassed the five-year average by 5.9 percent.

Fort Carlton saw a 20 percent decrease from 2006 and a 50 percent decrease from the five-year average.

Table 3: Camping Permit Days By Park Classification

	2002	2003	2004	2005	2006	2007	% change 2007 from 2006	Previous 5-yr average .2002-2006	% change 2007 from 5-yr average
NATURAL ENVIRONMENT PARKS									
Cypress Hills									
Regular	17,320	18,139	17,347	18,358	17,955	20,312	13.1%	17,824	14.0%
Reservation	7,430	9,175	8,581	8,754	9,366	10,047	7.3%	8,661	16.0%
Seasonal	770	550	550	330	330	0	-100.0%	506	-100.0%
Self Registration	1,653	1,647	1,163	645	834	52	-93.8%	1,188	-95.6%
School/youth group	3,034	3,251	3,491	2,232	3,369	3,717	10.3%	3,075	20.9%
Total Permit Days	30,207	32,762	31,132	30,319	31,854	34,128	7.1%	31,255	9.2%

Table 3: Camping Permit Days By Park Classification (continued)

	2002	2003	2004	2005	2006	2007	% change 2007 from 2006	Previous 5-yr average .2002-2006	% change 2007 from 5-yr average
NATURAL ENVIRONMENT PARKS									
Douglas									
Regular	6,692	7,220	4,075	4,118	2,495	2,786	11.7%	4,920	-43.4%
Reservation			2,696	2,691	4,688	4,872	3.9%	2,015	141.8%
Monthly	450	570	1470	2850	3390	4,020	18.6%	1,746	130.2%
Seasonal	3,300	3,245	0	0	0	0	n/a	1,309	0.0%
Self Registration	140	250	167	130	197	141	-25.6%	177	-29.1%
School/youth group	272	200	168	149	545	172	-68.4%	267	-35.5%
Total Permit Days	10,854	11,485	8,576	9,938	11,315	11,991	6.0%	10,434	15.9%
Duck Mountain									
Regular	7,209	7,268	790	1,025	2,284	1,897	-16.9%	3,715	-48.9%
Reservation	4,616	5,518	9,761	9,442	8,690	10,185	17.2%	7,605	33.9%
Seasonal	8,470	8,470	9,460	9,460	10,340	10,890	5.3%	9,240	17.9%
Self Registration	373	704	226	78	230	149	-35.2%	322	-53.6%
School/youth group	66	48	162	110	100	261	161.0%	97	168.5%
Total Permit Days	20,734	22,008	20,399	20,115	21,644	23,382	8.0%	20,980	11.5%
Good Spirit Lake									
Regular	6,299	5,167	711	539	706	1,033	46.3%	2,684	-61.5%
Reservation		2,152	5,129	5,382	6,380	6,655	4.3%	3,809	74.7%
Monthly	90	60	120	210	210	510	142.9%	138	269.6%
Seasonal	1,870	1,980	2,310	3,190	2,420	2,310	-4.5%	2,354	-1.9%
Self Registration	102	184	11	30,1716	53	83	55.6%	76	8.6%
School/youth group	181	242	1398	1244	1,150	1,098	-4.5%	843	30.2%
Total Permit Days	8,542	9,785	9,679	10,595	10,919	11,689	7.0%	9,904	18.0%
Greenwater Lake									
Regular	6,724	6,778	5,666	5,818	5,925	6,270	5.8%	6,182	1.4%
Reservation	2,365	3,293	2,609	2,805	3,150	3,208	1.8%	2,844	12.8%
School/youth group	335	136	123	92	62	272	338.7%	150	81.8%
Total Permit Days	9,424	10,207	8,398	8,715	9,137	9,750	6.7%	9,176	6.3%
Lac La Ronge									
Regular	3,637	3,784	2,759	2,729	1,945	2,285	17.5%	2,971	-23.1%
Reservation		128	100	81	19	0	-100.0%	66	-100.0%
Monthly	540	510	330	390	420	480	14.3%	438	9.6%
Seasonal	660	880	880	1650	1705	0	-100.0%	1,155	-100.0%
Self Registration	519	590	1282.2	1265.66	973	1,398	43.6%	926	51.0%
School/youth group	659	847	522	418	395	777	96.7%	568	36.7%
Total Permit Days	6,015	6,739	5,873	6,534	5,457	4,940	-9.5%	6,124	-19.3%
Makwa Lake									
Regular	9,859	10,904	10,821	11,341	12,001	13,959	16.3%	10,985	27.1%
Monthly	270	300	210	240	270	150	-44.4%	258	-41.9%
Seasonal	2,695	3,410	4,180	4,620	4,840	6270	29.5%	3,949	58.8%
Self Registration		38	3	37	0	10	n/a	16	-36.4%
School/youth group	42	54	68	285	0	92	n/a	90	2.4%
Total Permit Days	12,866	14,706	15,282	16,523	17,111	20,481	19.7%	15,298	33.9%

Table 3: Camping Permit Days By Park Classification (continued)

	2002	2003	2004	2005	2006	2007	% change 2007 from 2006	Previous 5-yr average .2002-2006	% change 2007 from 5-yr average
NATURAL ENVIRONMENT PARKS									
Meadow Lake									
Regular	17,056	17,912	17,070	16,325	18,584	20,302	9.2%	17,389	16.7%
Reservation	3,949	7,977	7,429	7,060	7,392	7,657	3.6%	6,761	13.2%
Seasonal	3,190	3,740	3,740	3,630	3,740	4,620	23.5%	3,608	28.0%
Self Registration	3,696	3,952	2,981	3,476	4,041	5,801	43.5%	3,629	59.8%
School/youth group	1,034	1,738	1,727	2,149	2,153	1,380	-35.9%	1,760	-21.6%
Total Permit Days	28,925	35,319	32,947	32,640	35,910	39,760	10.7%	33,148	19.9%
Moose Mountain									
Regular	3,798	687	498	259	427	427	0.0%	1,134	-62.3%
Reservation	7393	12,175	10,206	10,687	10,640	11,492	8.0%	10,220	12.4%
Seasonal	2,070	3,355	3,300	3,795	3,520	4,070	15.6%	3,208	26.9%
Self Registration	150	266	86	106	142	266	87.2%	150	77.3%
School/youth group	703	1,248	870	1,520	1,001	639	-36.2%	1,068	-40.2%
Total Permit Days	14,114	17,731	14,960	16,367	15,730	16,894	7.4%	15,780	7.1%
Narrow Hills									
Regular	395	195	5	0	2854	3,712	30.1%	690	438.1%
Monthly		300	30	0	570	540	-5.3%	180	200.0%
Seasonal	2,090	2,310	2,310	2,090	2,530	2,805	10.9%	2,266	23.8%
Self Registration	2,824	4,022	3,469	3,455	370	71	-80.7%	2,828	-97.5%
School/youth group	98	169	337	286	196	349	78.1%	217	60.7%
Total Permit Days	5,407	6,996	6,151	5,831	6,520	7,477	14.7%	6,181	21.0%
Saskatchewan Landing									
Regular	6,601	9,144	7,440	5,642	8,343	12,115	45.2%	7,434	63.0%
Reservation			1,097	2,919	3,260	2,621	-19.6%	1,455	80.1%
Monthly	960	360	810	2220	2070	1,800	-13.0%	1,284	40.2%
Seasonal	6,490	5,610	5,555	6,270	5,170	6,490	25.5%	5,819	11.5%
Self Registration	321	375	219	185.002	264	457	73.3%	273	67.7%
School/youth group	138	57	108	53	22	60	172.7%	76	-20.6%
Total Permit Days	14,510	15,546	15,229	17,289	19,129	23,543	23.1%	16,341	44.1%
RECREATION PARKS									
Blackstrap									
Regular		2	-4	7	908	1,896	108.8%	183	938.3%
Monthly	30		240	90	330	630	90.9%	n/a	n/a
Seasonal	110	605	440	330	110	550	400.0%	319	72.4%
Self Registration	1,656	1,779	1,311	1,664	936	140	-85.1%	1,469	-90.5%
School/youth group			0	0	0	72	n/a		
Total Permit Days	1,796	2,386	1,987	2,091	2,284	3,288	43.9%	2,109	55.9%
Buffalo Pound									
Regular	7,771	8,944	7,433	8,334	8,821	9,047	2.6%	8,261	9.5%
Seasonal	3,410	3,575	2,970	2,970	2,970	3,080	3.7%	3,179	-3.1%
Self Registration	133	260	142	148.346	276.85	163	-41.0%	192	-14.9%
School/youth group	401	1,417	1,412	279	779	1,770	127.2%	858	106.4%
Total Permit Days	11,715	14,196	11,957	11,731	12,847	14,060	9.4%	12,489	12.6%

Table 3: Camping Permit Days By Park Classification (continued)

	2002	2003	2004	2005	2006	2007	% change 2007 from 2006	Previous 5-yr average .2002-2006	% change 2007 from 5-yr average
RECREATION PARKS (continued)									
Candle Lake									
Regular	9,345	10,819	9,910	8,467	7,861	6,976	-11.3%	9,280	-24.8%
Reservation	1021	1808	1240	2,675	3,186	2,647	-16.9%	1,986	33.3%
Monthly	360	480	330	270	330	360	9.1%	354	1.7%
Seasonal	1,760	1,980	2,090	1,650	1,650	1,540	-6.7%	1,826	-15.7%
Self Registration	39	95	17	6	52	0	n/a	42	n/a
School/youth group	591	248	100	310	279	170	-39.1%	306	-44.4%
Total Permit Days	13,116	15,430	13,687	13,378	13,358	11,693	-12.5%	13,794	-15.2%
Crooked Lake									
Regular	958	1,154	187	152	83	55	-33.7%	507	-89.1%
Reservation			417	881	807	1,051	30.2%	421	149.6%
Monthly	510	90	90	0	60	0	-100.0%	150	-100.0%
Seasonal	1100	1320	1210	1,320	1,540	2,530	64.3%	1,298	94.9%
Self Registration	831	722	698.08	607	1,002	788	-21.4%	772	2.0%
Total Permit Days	3,399	3,286	2,602	2,960	3,492	4,424	26.7%	3,148	40.5%
Danielson									
Regular	1311	1328	1240	1,627	2,008	1,960	-2.4%	1,503	30.4%
Monthly	90	60	0	0	630	810	28.6%	156	419.2%
Seasonal	2,035	2640	2,695	3,630	4,070	5,170	27.0%	3,014	71.5%
Self Registration	635	886	608	256	170	387	128.3%	511	-24.2%
School/youth group	53	50	42	128	0	15	n/a	55	-72.5%
Total Permit Days	4,124	4,964	4,585	5,641	6,878	8,342	21.3%	5,238	59.3%
Echo Valley									
Regular	5,909	6,820	6,159	0	0	0	n/a	3,778	n/a
Reservation	0	0	0	6,499	7,222	6,998	-3.1%	2,744	155.0%
Monthly	360	270	240	510	600	1,350	125.0%	396	240.9%
Seasonal	7,810	11,275	10,890	11,880	12,375	12,760	3.1%	10,846	17.6%
Self Registration	1,373	447	366	273	285	243	-14.8%	549	-55.8%
School/youth group	2,585	1721	1,251	2,982	2,238	1,475	-34.1%	2,155	-31.6%
Total Permit Days	18,037	20,533	18,906	22,144	22,720	22,826	0.5%	20,468	11.5%
Pike Lake									
Regular	11,297	13,100	11,560	11,904	8,767	5,371	-38.7%	11,326	-52.6%
Reservation					4,533	7,443	64.2%	907	721.0%
Seasonal	2,860	2,750	2,640	2,750	3,410	2,750	-19.4%	2,882	-4.6%
Self Registration	82	105	95	169.123	64	138	116.2%	103	34.4%
School/youth group	1,583	2,374	2,008	1,538	948	923	-2.6%	1,690	-45.4%
Total Permit Days	15,822	18,329	16,303	16,361	17,722	16,625	-6.2%	16,907	-1.7%
Rowan's Ravine									
Regular	3,315	3,299	4,033	5,315	5,512	3,932	-28.7%	4,295	-8.4%
Monthly	30		90	360	1110	1,200	8.1%	318	277.4%
Seasonal	12,375	11,605	11,880	12,540	12,925	13,640	5.5%	12,265	11.2%
Self Registration	956	2,240	74	20.5112	44	95	116.7%	667	-85.8%
School/youth group	929	142	188	170	193	62	-67.9%	324	-80.9%
Total Permit Days	17,605	17,286	16,265	18,406	19,784	18,929	-4.3%	17,869	5.9%

Table 3: Camping Permit Days By Park Classification (continued)

	2002	2003	2004	2005	2006	2007	% change 2007 from 2006	Previous 5-yr average .2002-2006	% change 2007 from 5- yr average
RECREATION PARKS (continued)									
The Battlefords									
Regular	7,340	5,294	3,865	5,070	7,760	10,316	32.9%	5,866	75.9%
Monthly	150	150	60	150	150	120	-20.0%	132	-9.1%
Seasonal	3,190	2,695	2,035	2,750	3,905	5,280	35.2%	2,915	81.1%
School/youth group	92	134	81	94	193	216	11.9%	119	81.8%
Total Permit Days	10,772	8,273	6,041	8,064	12,008	15,932	32.7%	9,032	76.4%
HISTORIC PARKS									
Fort Carlton									
Regular	56	73	171	60	52	53	1.9%	82	-35.7%
Self Registration	7							1	-100.0%
School/youth group	429	648	179	532	247	185	-25.1%	407	-54.5%
Total Permit Days	492	721	350	592	299	238	-20.4%	491	-51.5%
GRAND TOTAL - PROVINCIAL PARK CAMPGROUND PERMIT DAYS									
Regular	132,892	138,031	111,736	116,682	115,291	124,704	8.2%	122,926	1.4%
Reservation	26,774	42,226	46,569	50,686	69,333	74,986	8.0%	47,118	58.9%
Monthly	3,840	3,150	4,020	7,290	10,140	11,970	18.0%	5,688	110.4%
Seasonal	66,255	71,995	69,135	74,855	77,550	84,755	9.3%	71,958	17.8%
Self Registration	15,490	18,562	12,918	12,552	9,934	10,288	3.6%	13,891	-25.9%
School/youth group	13,288	14,797	14,406	14,631	13,870	13,705	-1.2%	14,198	-3.5%
Grand Total Permit Days	258,539	288,761	258,784	276,696	296,118	320,298	8.2%	275,779	16.1%

Table 4 provides a breakdown of camping permit days by recreation site.

Table 4: Provincial Recreation Site Campgrounds - Permit Days

	2002	2003	2004	2005	2006	2007	Percent change 2007 from 2006	Previous 5-yr ave. 2002-2006	%t change 2007 from 5-yr ave.
Amisk Lake - Sawmill Bay									
Self Registration	66	117	96	85	86	70	-18.6%	90	-22.2%
Permit Days	66	117	96	85	86	70	-18.6%	90	-22.2%
Amisk Lake - Sand Beach									
Seasonal	330	110	110	110	0	0		132	
Self Registration	169	150	102	85	168	110	-34.5%	135	-18.4%
Permit Days	499	260	212	195	168	110	-34.5%	267	-58.8%
Anglin Lake*									
Seasonal	2695	2750	2860	2640	2420	2420	0.0%	2673	-9.5%
Self Registration/Regular	1847	2106	1979	2238	2407	2064*	-14.2%	2115	-2.4%
School/youth group	35	57				264		18	
Permit Days	4577	4913	4839	4878	4827	4748	-1.6%	4807	-1.2%
Beatty Lake									
Self Registration	5	141	131	106	125	114	-8.5%	102	12.2%
Permit Days	5	141	131	106	125	114	-8.5%	102	12.2%
Beaver/Cowan Dam									
Self Registration	14	76	74	100	391	52	-86.7%	131	-60.3%
Permit Days	14	76	74	100	391	52	-86.7%	131	-60.3%
Bronson Forest									
Regular									
Seasonal	1760	1485	2090	1870	2200	0		1881	
Self Registration	1471	2024	1295	1286	1530	1760	15.1%	1521	15.7%
Permit Days	3231	3509	3385	3156	3730	1760	-52.8%	3402	-48.3%
Chitek Lake									
Regular		3						1	
Seasonal	990	990	990	990	990	0		990	
Self Registration	2006	2504	2331	2476	2570	2830	10.1%	2377	19.1%
Permit Days	2996	3497	3321	3466	3560	2830	-20.5%	3368	-16.0%
Coldwell Park									
Self Registration	43	108	101	108	145	54	-62.7%	101	-46.4%
School/youth group		46		128	0	0	N/A	58	
Permit Days	43	154	101	236	145	54	-62.7%	136	-60.1%
Emma Lake									
Regular	6803	6435	5310	5475	5124	5813	13.4%	5829	-0.3%
Reservation	2057	3138	2810	2812	2886	2619	-9.3%	2741	-4.4%
Seasonal	220	220	440	990	770	1320	71.4%	528	150.0%
Self Registration						0			
School/youth group	473	763	633	32	614	102	-83.4%	503	-79.7%
Permit Days	9553	10556	9193	9309	9394	9854	4.9%	9601	2.6%

*Anglin Lake sold permits in 2007 as opposed to self-registration in 2002-2006

Table 4: Provincial Recreation Site Campgrounds - Permit Days (continued)

	2002	2003	2004	2005	2006	2007	Percent change 2007 from 2006	Previous 5-yr ave. 2002-2006	% change 2007 from 5-yr ave.
Granite Lake									
Self Registration	53	80	49	38	35	62	77.1%	51	21.5%
Permit Days	53	80	49	38	35	62	77.1%	51	21.5%
Hanson Lake (not open in 2007)									
Self Registration	320	411	263	191	111	0		259	
Permit Days	320	411	263	191	111	0		259	
Jan Lake									
Regular									
Permit Days	0	0	0	0	0	0			
Leaf Rapids									
Self Registration	90	112	89	93	97	61	-37.6%	96	-37.1%
Permit Days	90	112	89	93	97	61	-37.6%	96	-37.1%
Pagan Lake									
Self Registration	19	131	70	56	115	76	-33.7%	78	-2.8%
Permit Days	19	131	70	56	115	76	-33.7%	78	-2.8%
Ruby Lake									
Regular									
Permit Days	0	0	0	0	0	0			
Tyrell Lake									
Seasonal									
Self registration	22	51	28	15	36	32	-11.1%	30	5.4%
Permit Days	22	51	28	15	36	32	-11.1%	30	5.4%
Woody Lake									
Regular	762	710	723	546	696	487	-30.0%	687	-29.2%
Monthly*		120	120	210	240	450	87.5%	138	226.1%
Seasonal	110	385	290	440	880	880	0.0%	421	109.0%
Permit Days	872	1215	1133	1196	1816	1817	0.1%	1246	45.8%
TOTAL RECREATION SITES									
	2002	2003	2004	2005	2006	2007	Percent change 2007 from 2006	Previous 5-yr ave. 2002-2006	%t change 2007 from 5-yr ave.
Regular	7565	7145	6033	6021	5820	6300	8.2%	6517	-3.3%
Reservation	2057	3138	2810	2812	2886	2619	-9.3%	2741	-4.4%
Monthly	0	120	120	210	240	450	87.5%	138	226.1%
Seasonal	6105	5940	6780	7040	7260	4620	-36.4%	6625	-30.3%
Self Registration	6125	8147	6658	6877	7815	7570	-3.1%	7124	6.3%
School/youth group	508	866	633	160	614	102	-83.4%	556	-81.7%
Total Permit Days	22360	25356	23034	23120	24635	21640	-12.2%	23701	-8.7%

Table 5 provides a combined total for park and recreation sites camping permit days

Table 5: Total Reported Campground Permit Days For Provincial Parks and Recreation Sites

	2002	2003	2004	2005	2006	2007	Percent change 2007 from 2005	Five-year average 2002-2006	Percent change 2007 from five-year average
Regular	140,457	145,179	117,769	119,610	121,111	131,004	8.2%	128,825	1.7%
Reservation	28,831	45,364	49,379	53,498	72,219	77,495	7.3%	49,858	55.4%
Monthly	3,840	3,270	4,140	7,500	10,380	12,420	19.7%	5,826	113.2%
Seasonal	72,360	77,935	75,915	81,895	84,810	89,375	5.4%	78,583	13.7%
Self Registration	21,615	26,709	19,576	19,429	17,749	17,527	-1.0%	21,015	-16.4%
School/youth group	13,796	15,663	15,039	14,791	14,484	14,071	-2.9%	14,755	-4.6%
Total Permit Days	280,899	314,120	281,818	296,723	320,753	341,892	6.6%	298,862	14.4%

Table 5a: May Long Weekend Camping Permit Days

Location	May Long Weekend 2006			May Long Weekend 2007			Percent Change from 2006		
	# Camping Permits	Permit Days	Percent Occup.	# Camping Permits	Permit Days	Percent Occup.	# Camping Permits	Permit Days	Percent Occup.
Buffalo Pound	137	340	40%	129	331	39%	-5.8%	-2.6%	-3.3%
Candle Lake	57	137	42%	34	79	43%	-40.4%	-42.3%	3.4%
Crooked Lake	34	86	40%	42	114	37%	23.50%	32.56%	-6.81%
Cypress Hills	246	630	39%	281	746	38%	14.2%	18.4%	-3.5%
Danielson	61	163	37%	71	194	37%	16.4%	19.0%	-2.2%
Douglas	104	288	36%	110	291	38%	5.8%	1.0%	4.7%
Duck Mountain	106	318	33%	37	83	45%	-65.09%	-73.90%	33.73%
Echo Valley	222	606	37%	240	662	36%	8.1%	9.2%	-1.0%
Emma Lake	49	115	43%	35	95	37%	-28.6%	-17.4%	-13.5%
Good Spirit Lake	63	162	39%	60	164	37%	-4.8%	1.2%	-5.9%
Greenwater Lake	41	95	43%	12	24	50%	-70.7%	-74.7%	15.9%
Makwa Lake	120	323	37%	82	235	35%	-31.7%	-27.2%	-6.1%
Moose Mountain	140	305	46%	116	322	36%	-17.1%	5.6%	-21.5%
Pike Lake	252	597	42%	143	381	38%	-43.3%	-36.2%	-11.1%
Rowan's Ravine	222	609	36%	210	593	35%	-5.4%	-2.6%	-2.9%
Saskatchewan Landing	194	507	38%	221	592	37%	13.9%	16.8%	-2.4%
The Battlefords	100	239	42%	120	311	39%	20.0%	30.1%	-7.8%
Total	2148	5,520	34%	1,943	5,217	29.7%	-9.5%	-5.5%	-4.4%

Table 5b: May Long Weekend Compliance Comparison 2006 to 2007

Year	Charges				Narcotics Control Act	Warnings		Evictions		Suspensions		Complaints	Vandalism	
	Parks	Alcohol	CCC	HTA		Verbal	Written	Sites	Indiv.	24hr	30 Day		Occurrences	Damage in \$
2006	9	36	3	3	2	397	30	25	141	2	1	18	9	900.00
2007	1	24	2	2	0	155	32	16	97	0	0	28	8	200.00
Difference	-8	-12	-1	-1	-2	-242	-2	-9	-44	-2	-1	10	-1	-700.00
% Change	-90%	-33%	-33%	-33%	-200%	-61%	0.07%	36%	-31%	200%	100%	56%	-11%	-0.78

CCC = Criminal Code of Canada
HTA = Highway Traffic Act

Table 6 provides a breakdown of the number of seasonal camping permits issued and a comparison with 2006 data.

Table 6: Seasonal Camping Program

	2006		2007	
	Sites Available	Seasonal Camping Permits Issued	Sites Available	Seasonal Camping Permits Issued
NATURAL ENVIRONMENT PARKS				
Cypress Hills	5	3	0	0
Douglas	0	0	0	0
Duck Mountain	74	94	74	99
Good Spirit Lake	16	22	22	21
Greenwater Lake	0	0	0	0
Lac La Ronge	94	16	94	21
Makwa Lake	42	44	21	57
Meadow Lake	36	9	25	33
Moose Mountain	43	32	53	37
Narrow Hills	16	23	24	26
Saskatchewan Landing	77	47	59	59
Sub Total	403	292	372	353
RECREATION PARKS				
Blackstrap	6	1	0	5
Buffalo Pound	26	27	26	28
Candle Lake	18	15	15	14
Crooked Lake	7	14	11	23
Danielson	92	37	47	47
Echo Valley	100	113	117	116
Pike Lake	28	31	28	25
Rowan's Ravine	140	118	125	124
The Battlefords	55	36	58	52
Sub Total	472	366	427	434
RECREATION SITES				
Amisk Lake-Sand Beach				
Anglin Lake	20	24	20	22
Bronson Forest	22	20	22	0
Chitek Lake	9	9	9	9
Emma Lake	12	7	12	12
Tyrrell Lake				
Woody River		8		8
Sub Total	63	62	63	51
Grand Total	938	720	862	838

CAMPFIRE PERMITS AND CAMPFIRE PERMIT DAYS

In 2007, campfire permits remained a requirement if a camper wanted to have a campfire.

In 2004, 54,552 campfire permits were issued.

- 34,329 daily permits
- 14,290 three-day permits
- 5,394 weekly permits
- 589 annual

In 2005, 57,931 campfire permits were issued, an increase of 6.1 percent.

- 35,933 daily permits
- 15,805 three-day permits
- 5,469 weekly permits
- 724 annual permits

In 2006, 57,232 campfire permits were issued, decrease of 1.2 percent from 2005.

- 35,342 daily permits
- 15,833 three-day permits
- 5,219 weekly permits
- 838 annual permits

In 2007, 61,448 campfire permits were issued, an increase of 7.37 percent from 2006.

- 37,203 daily permits
- 17,601 three-day permits
- 5,610 weekly permits
- 1,034 annual permits

These 61,448 permits translate to 243,016 campfire permit days - that is the number of days when campers could have campfires, an increase of 15 percent over 2006. As reported in **Table 5**, there were 341,937 camping permit days. This means that campfire permits were in effect for 73 percent of the total camping permit days in 2007.

A park-by-park breakdown of the campfire permits issued and campfire permit days is shown in **Table 7**.

Table 7: Campfire Permits Issued and Percent Change from 2006

	Daily Permit	3-Day Permit	Weekly Permit	Annual Permit	2007 Campfire Permit Days	2006 Campfire Permit Days	% Change 2007-2006
NATURAL ENVIRONMENT PARKS							
Cypress Hills	5,194	2,998	634	14	20,166	12143	66.07%
Douglas	1,422	740	199	30	8,335	8208	1.55%
Duck Mountain	1,854	1,190	403	98	19,025	17294	10.01%
Good Spirit Lake	1,652	881	234	23	8,463	7804	8.44%
Greenwater Lake	1,547	917	280	5	6,808	6573	3.58%
Lac La Ronge	636	247	67	8	2,726	1633	66.93%
Makwa Lake *	850	507	388	90	14,987	14800	1.26%
Meadow Lake	2,725	1,818	1,193	65	23,680	23779	-0.42%
Moose Mountain	2,554	1,145	200	44	12,229	11158	9.60%
Narrow Hills	513	291	136	14	3,878	3793	2.24%
Saskatchewan Landing	1,887	792	270	121	19,463	14384	35.31%
Sub Total	20,834	11,526	4,004	512	139,760	121569	14.96%
RECREATION PARKS							
Blackstrap	690	176	26	5	1,950	1522	28.12%
Buffalo Pound	2,082	624	155	39	9,329	8577	8.77%
Candle Lake	1,313	622	283	17	7,030	7880	-10.79%
Crooked Lake	406	125	18	22	3,327	2396	38.86%
Danielson	625	166	32	41	5,857	4975	17.73%
Echo Valley	2,312	776	86	115	17,892	15484	15.55%
Pike Lake	3,044	983	256	39	12,075	11526	4.76%
Rowan's Ravine	1,762	677	115	119	17,688	14517	21.84%
The Battlefords	1,776	860	215	48	11,141	8927	24.80%
Sub Total	14,010	5,009	1,186	445	86,289	75804	13.83%
RECREATION SITES							
Anglin Lake	285	143	42	17	2,878	2887	-0.31%
Beatty Lake	21	3	1	0	37	30	23.33%
Beaver/Cowan Dam	71	17	1	0	129	102	26.47%
Bronson Forest	209	120	54	15	2,597	1067	143.39%
Chitek Lake	353	172	79	5	1,972	1777	10.97%
Creighton Area	77	29	3	1	295	234	26.07%
Emma Lake	1,077	526	234	33	7,923	7104	11.53%
Pagan Lake	24	3	0	0	33	36	-8.33%
Woody River	180	50	6	6	1,032	893	15.57%
Sub Total	2,297	1,063	420	77	16,896	14130	19.58%
HISTORIC PARKS							
Fort Carlton	62	3	0	0	71	51	39.22%
GRAND TOTAL	37,203	17,601	5,610	1,034	243,016	211554	14.87%

PROGRAMS



PROVINCIAL PARKS VISITOR PROGRAM STATISTICS

This section presents information on natural and human history school/youth group program use, historic parks visitor use, and natural environment and recreation parks general public (casual) visitor programs which include a combination of general public interpretive educational programs, some recreational programs and special events.

Attendance at provincial historic parks and their programs is measured through the use of hand counters. Statistical reporting procedures for participation levels at the natural environment and recreation parks and sites are based on staff recording the number of programs provided and the number of participants attending the programs. The reporting procedures are being updated, which may have impacted reports of use.

Provincial Parks Programs

Historic Parks

Four historic parks offer staff-conducted programs. Group programs are offered to school/youth groups and to other groups on a pre-booked basis. Each booked group receives one program. As historic parks interpretive programs are carried out continuously during the hours of operation, those people who arrive separate from booked groups are referred to as casuals. Each member of the group or each person who comes as a “casual visitor” is included in the program statistics and the visit statistics for historic parks. Visits and program use at the four historic parks with interpretive staff are given in **Table 8**.

Figure 13: Total Visits Including Visitor Types for Historic Parks with Staff-Conducted Programs 2002 to 2007

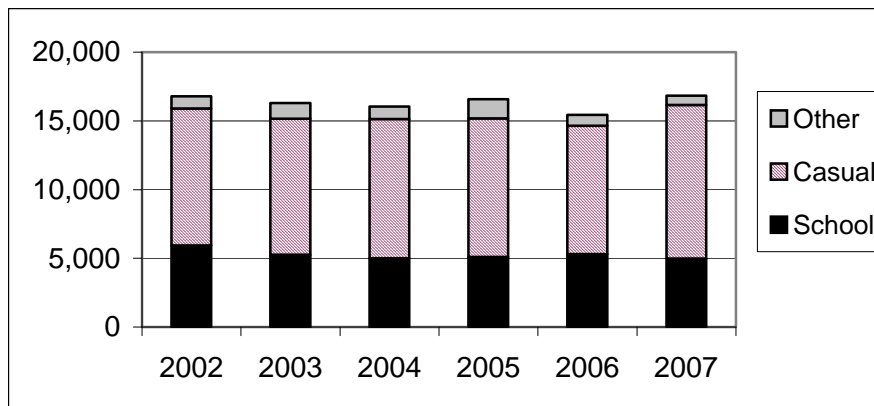


Table 8: Historic Parks Interpretive Programs and Participants

Historic Parks	Visitor Type	Number of Programs Delivered						% Change 2006-07
		2002	2003	2004	2005	2006	2007	Programs
Cannington Manor	School	27	18	18	32	21	24	14.3%
	Casual							0.0%
	Other	1	5	4	11	3	8	166.7%
	Total	28	23	22	43	24	32	33.3%
Fort Carlton	School	118	111	107	107	113	112	-0.9%
	Casual					0		0.0%
	Other	29	26	22	27	30	24	-20.0%
	Total	147	137	129	134	143	136	-4.9%
Last Mountain House *	School			2		0	0	
	Casual					0	0	0.0%
	Other	1	1	1		0	1	
	Total	1	1	3	0	0	1	
Wood Mountain Post **	School	11	15	12	12	15	12	-20.0%
	Casual					0		
	Other	6	3	6	3	4	3	-25.0%
	Total	17	18	18	15	19	15	-21.1%
Historic Parks	School	156	144	139	151	149	148	-0.7%
	Casual							
	Other	37	35	33	41	37	36	-2.7%
	Total	193	179	172	192	186	184	-1.1%

Historic Parks	Visitor Type	Number of Participants						% Change 2006-07
		2002	2003	2004	2005	2006	2007	Participants
Cannington Manor	School	781	508	648	738	524	676	29.0%
	Casual	2,703	3,451	3,380	3,291	2,535	3,156	24.5%
	Other	27	187	130	465	65	162	149.2%
	Total	3,511	4,146	4,158	4,494	3,124	3,994	27.8%
Fort Carlton	School	4,903	4,478	4,135	4,151	4,582	4,119	-10.1%
	Casual	4,619	4,278	4,052	3,952	3,914	5,597	43.0%
	Other	668	775	616	868	612	398	-35.0%
	Total	10,190	9,531	8,803	8,971	9,108	10,114	11.0%
Last Mountain House *	School	0	0	21	0	0	0	
	Casual	1,528	1,131	911	1,035	919	918	-0.1%
	Other	45	40	40	0	0	34	
	Total	1,573	1,171	972	1,035	919	952	3.6%
Wood Mountain Post *	School	252	277	201	206	202	195	-3.5%
	Casual	1,120	1,034	1,775	1,798	1,975	1,499	-24.1%
	Other	134	145	124	65	115	76	-33.9%
	Total	1,506	1,456	2,100	2,069	2,292	1,770	-22.8%
Historic Parks	School	5,936	5,263	5,005	5,095	5,308	4,990	-6.0%
	Casual	9,970	9,894	10,118	10,076	9,343	11,170	19.6%
	Other	874	1,147	910	1,398	792	670	-15.4%
	Total	16,780	16,304	16,033	16,569	15,443	16,830	9.0%

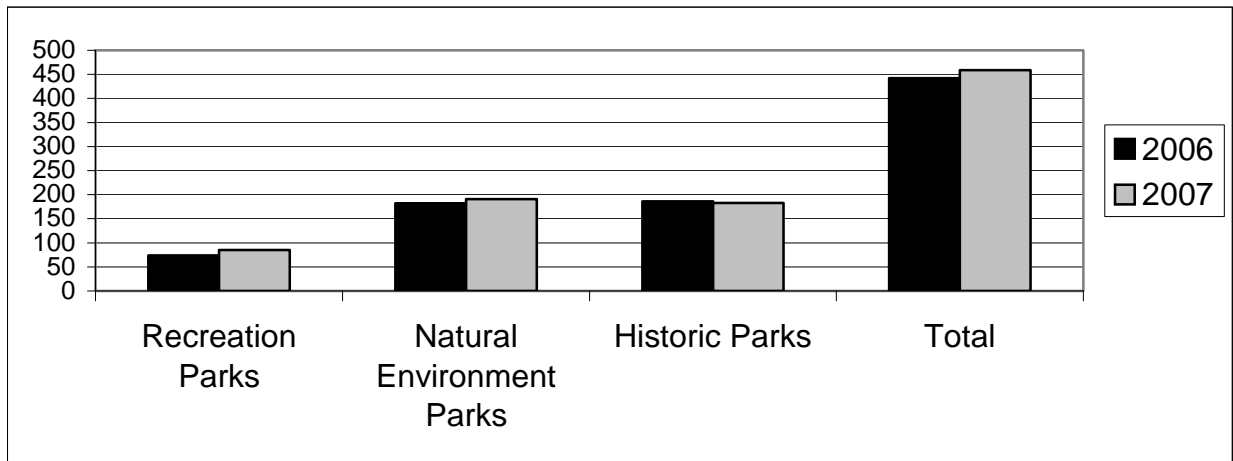
Last Mountain House and Wood Mountain Post are open from the end of June to the end of the Labour Day weekend

School Group Use

Reporting of school group programs is relatively consistent throughout the provincial parks system; school/youth group use at natural environment, recreation and historic parks is summarized in **Table 9**. Historic parks provide only one program per group. Natural environment and recreation parks may provide more than one program per group, therefore, the number of programs offered and participants at these parks will be greater than the number of groups and students/youths.

The number of school groups utilizing park programs increased 3.8 percent or by 17 groups from 2006.

Figure 14: Comparison between 2006 and 2007 of School Group Use by Park Classification and Total School/Youth Groups



The total number of students who utilized conducted programs increased by 12 percent in 2007. Some of the parks which decreased in student visitation in 2006 rebounded in 2007 with increases:

- Pike Lake with a decrease of 30% in 2006 increased by 126% in 2007
- Douglas decreased by 20% in 2006 increased by 68% in 2007
- Cannington Manor saw a decrease of 44% in 2006 had an increase of 29% in 2007
- Sask Landing saw a decrease of 42% in 2006 had an increase of 5% in 2007
- Cypress Hills had a 15% decrease in 2006 and an 18% increase in 2007
- Duck Mountain had a 1% increase in 2006 after decreasing 10% in 2006

Figure 15: Comparison between 2006 and 2007 of the Number of Students who came to Staff-Conducted School Programs by Park Classification and Total Number of Students

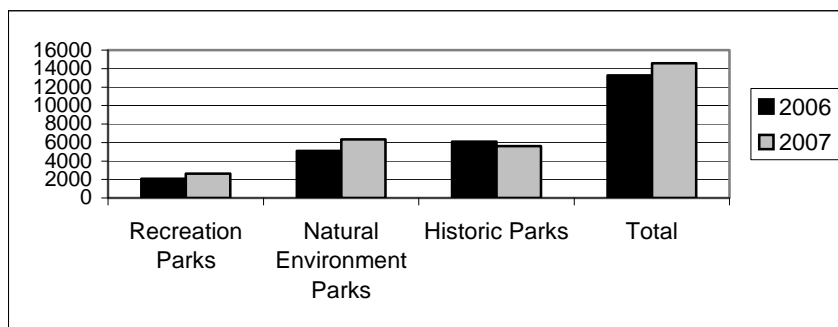


Table 9: School/Other Youth Group Programs By Park Classification

Natural Environment		2006				2007				
	Visitor Type	No. of Groups	No. of Students	No. of Programs	No. of Participants	No. of Groups	No. of Students	No. of Programs	No. of Participants	% Change From 2006
Cypress Hills	School	67	1,858	131	3229	69	2,204	223	4,853	18.62%
	Other	3	60	1	20	3	148	9	328	
	Total	70	1,918	132	3249	72	2,352	232	5,181	22.63%
Douglas	School	4	66	4	66	5	111	7	151	68.18%
	Other	0	0	0	0					
	Total	4	66	4	66	5	111	7	151	68.18%
Duck Mountain	School	18	411	38	644	17	415	62	773	0.97%
	Other	0	0	0	0					
	Total	18	411	38	644	17	415	62	773	0.97%
Good Spirit Lake	School	12	399	41	700	17	394	35	898	-1.25%
	Other	0	0	0	0					
	Total	12	399	41	700	17	394	35	898	
Greenwater Lake	School	12	500	31	837	14	560	51	1,161	12.00%
	Other	0	0	9	0	1	24	2	48	
	Total	12	500	40	837	15	584	53	1,209	16.80%
Meadow Lake	School	19	606	51	1,014	20	426	70	978	-29.70%
	Other	1	16	1	16					
	Total	20	622	52	1,030	20	426	70	978	-31.51%
Moose Mountain	School	38	924	130	2,066	38	1,918	115	1918	107.58%
	Other	1	22	1	22					
	Total	39	946	131	2,088	38	1,918	115	1918	102.75%
Saskatchewan Landing	School	6	190	22	683	6	200	22	446	5.26%
	Other	1	23	1	23	1	10	3	30	-56.52
	Total	7	213	23	706	7	210	25	476	-1.41%
Natural Environment	School	176	4,954	448	9,239	186	6,228	585	11,178	25.72%
	Other	6	121	13	81	5	121	14	406	
Subtotal	Total	182	5,075	461	9,320	191	6,349	599	11,584	25.10%

Table 9: School/Other Youth Group Programs By Park Classification

Recreation Parks		2006				2007				% Change From 2006
Visitor Type	No. of Groups	No. of Students	No. of Programs	No. of Participants	No. of Groups	No. of Students	No. of Programs	No. of Participants		
Buffalo Pound	School	27	721	52	1069	23	806	44	889	11.79%
	Other	1	18	2	36	3	44	3	44	
	Total	28	739	54	1105	26	850	47	933	15.02%
Echo Valley	School	23	809	87	1626	21	581	61	1067	-28.18%
	Other	0	0	0	0	2	17	3	32	
	Total	23	809	87	1626	23	598	64	1099	-26.08%
Pike Lake	School	20	519	64	856	36	1,174	130	2,045	126.20%
	Other	3	23	5	39					
	Total	23	542	69	895	36	1174	130	2045	116.61%
Recreation Parks	School	70	2049	203	3551	80	2561	235	4001	24.99%
	Other	4	41	7	75	5	61	6	76	
Subtotal	Total	74	2090	210	3626	85	2622	241	4077	25.45%
Historic Parks										
Cannington Manor	School	21	524	21	524	24	676			29.01%
	Other	3	65	3	65	8	162			
	Total	24	589	24	589	32	838	0	0	42.28%
Fort Carlton	School	113	4582	113	4582	112	4119			-10.10%
	Other	30	612	30	612	24	398			
	Total	143	5194	143	5194	136	4517	0	0	-13.03%
Last Mountain House	School	0	0	0	0	0	0	0	0	
	Other	0		0	0	0		0	0	
	Total	0	0	0	0	0	0	0	0	

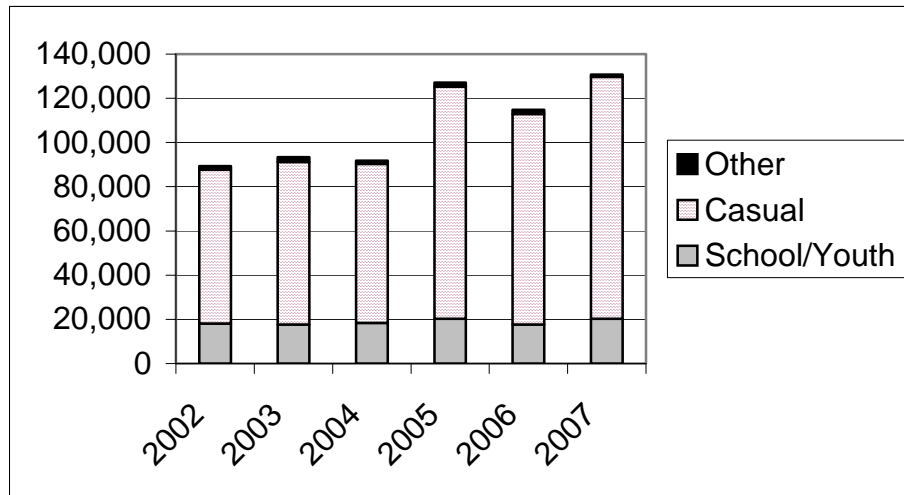
Table 9: School/Other Youth Group Programs By Park Classification (continued)

Recreation Parks		2006				2007				% Change From 2006
Visitor Type	No. of Groups	No. of Students	No. of Programs	No. of Participants	No. of Groups	No. of Students	No. of Programs	No. of Participants		
Wood Mountain Post	School	15	202	15	202	12	195			-3.47%
	Other	4	115	4	115	3	76			-33.91%
	Total	19	317	19	317	15	317	0	0	0.00%
Historic Parks	School	149	5308	149	5308	148	4990	0	0	-5.99%
	Other	37	792	37	792	35	636	0	0	-19.70%
	Total	186	6100	186	6100	183	5626	0	0	-7.77%
Combined School/Youth										
Totals	School	395	12,311	800	18,098	414	13,779	820	15,179	11.92%
	Other	47	954	57	948	45	818	20	482	-14.26%
	Total	442	13,265	857	19,046	459	14,597	840	15,661	10.04%

Total Conducted Program Participation

Provincial natural environment/recreation park programs entail scheduled activities that are available to park visitors, ranging from water safety demonstrations and guided nature hikes to evening campfire presentations. Since participation in these programs is recorded at each event individually, participants may be recounted if they participate in more than one program. **Table 10** gives the program use, including school/youth and the general public and other groups who participated in programs for natural environment parks and recreation parks, as well as historic parks. Over 130,000 participants took part in conducted learning programs.

Figure 16: Conducted Program Use by Visitor Type from 2002 to 2007



Other Interpretive Services

The statistics provided do not include the significant numbers of persons using self-use facilities within the provincial parks. This includes self-use interpretive trails, auto tours and interpretive displays. Parks including Cypress Hills, Saskatchewan Landing, Greenwater Lake, Meadow Lake, Duck Mountain, Moose Mountain and Pike Lake also offer self-use education kits.

Table 10: Number of Programs by Visitor Type by Classification

Natural Environment Parks							
	Visitor	Number of Programs Delivered					
	Type	2002	2003	2004	2005	2006	2007
Cypress Hills	School/Youth	232	249	260	198	131	231
	Casual	262	97	206	216	189	174
	Other	2	12	6	9	2	9
	Total	496	358	472	423	322	414
Douglas	School/Youth	9	7	2	7	4	7
	Casual	50	48	49	48	60	58
	Other	0	0	0	0	0	0
	Total	59	55	51	55	64	65
Duck Mountain	School/Youth	18	7	27	41	38	62
	Casual	68	77	149	207	91	74
	Other	0	13	4	3	0	0
	Total	86	97	180	251	129	136
Good Spirit Lake	School/Youth	8	22	74	26	41	35
	Casual	67	73	46	106	70	94
	Other	0	1		2	0	0
	Total	75	96	120	134	111	129
Greenwater Lake	School/Youth	45	23	37	31	31	51
	Casual	77	67	72	86	60	53
	Other	2	0	0	0	2	2
	Total	124	90	109	117	93	106
Lac La Ronge	School/Youth	3	4			0	
	Casual	0	17			0	
	Other	7	0			0	
	Total	10	21	0	0	0	0
Meadow Lake	School/Youth	34	20	30	65	50	70
	Casual	88	78	0	142	102	246
	Other	0	0	0	43	1	0
	Total	122	98	30	250	153	316
Moose Mountain	School/Youth	100	100	119	119	130	115
	Casual	93	110	109	125	139	134
	Other	14	11	1	1	1	0
	Total	207	221	229	245	270	249
Saskatchewan Landing	School/Youth	19	17		35	22	28
	Casual	54	51		86	62	90
	Other	8	3		50	23	
	Total	81	71	0	171	107	118
Sub Total Natural Environment	School/Youth	468	449	549	522	447	599
	Casual	759	618	631	1,016	773	923
	Other	33	40	11	108	29	11
	Total	1,260	1,107	1,191	1,646	1,249	1,533

Table 10: Number of Programs by Visitor Type by Classification (continued)

Natural Environment Parks							
	Visitor	Number of Programs Delivered					
	Type	2002	2003	2004	2005	2006	2007
The Battlefords	School/Youth	3	0	0	0	0	0
	Casual	36	0	0	0	0	0
	Other						
	Total	39	0	0	0	0	0
Buffalo Pound	School/Youth	6	32	39	38	54	44
	Casual	66	166	109	99	102	89
	Other	0	4	6	0	1	3
	Total	72	202	154	137	157	136
Echo Valley	School/Youth	37	51	41	53	87	61
	Casual	92	96	85	125	83	49
	Other		2	0	3	8	3
	Total	129	149	126	181	178	113
Pike Lake	School/Youth	52	47	75	102	69	152
	Casual	67	75	81	140	135	157
	Other	3	1		0	3	
	Total	122	123	156	242	207	309
Rowan's Ravine	School/Youth		0	0			0
	Casual	74	0	0			22
	Other						
	Total	74	0	0	0	0	22
Recreation Parks	School/Youth	98	130	155	193	210	257
	Casual	335	337	275	364	320	317
	Other	3	7	6	3	12	6
	Total	436	474	436	560	542	580
Sub Total							
Combined Total Natural Environment and Recreation Park							
	School/Youth	566	579	704	715	657	856
	Casual	1094	955	906	1380	1093	1240
	Other	36	47	17	111	41	17
	Total	1696	1581	1627	2206	1791	2113

Table 10: Number of Participants by Visitor Type by Classification (continued)

Natural Environment Parks							
	Visitor	Number of Participants					
	Type	2002	2003	2004	2005	2006	2007
Cypress Hills	School/Youth	4,185	4,725	5,281	5,816	3,229	4,853
	Casual	15,786	11,453	15,470	25,010	22,939	27,015
	Other	160	486	116	281	42	328
	Total	20131	16,664	20,867	31,107	26,210	32,196
Douglas	School/Youth	179	141	23	112	66	151
	Casual	1,167	1,241	1,196	1,808	2,558	2,483
	Other	0	0	0	0	0	0
	Total	1,346	1,382	1,219	1,920	2,624	2,634
Duck Mountain	School/Youth	481	161	460	898	644	773
	Casual	2,856	1,610	8,122	10,997	8,585	10,047
	Other	0	266	96	87	0	0
	Total	3,337	2,037	8,678	11,982	9,229	10,820
Good Spirit Lake	School/Youth	140	397	1,461	559	399	898
	Casual	2,633	7,005	2,048	8,659	7,948	3,954
	Other		0	0	22	0	0
	Total	2,773	7,402	3,509	9,240	8,347	4,852
Greenwater Lake	School/Youth	1,026	780	884	643	837	1,161
	Casual	3,679	4,802	4,203	6,002	6,725	5,459
	Other	108	0	0	0	44	48
	Total	4813	5,582	5,087	6,645	7,606	6,668
Lac La Ronge	School/Youth	77	154			0	
	Casual	0	281			0	
	Other	135	0			0	
	Total	212	435	0	0	0	0
Meadow Lake	School/Youth	1,191	909	1,361	1,434	827	978
	Casual	5,229	4,668	5,100	6,281	2,878	14,140
	Other	0	0		92	16	0
	Total	6,420	5,577	6,461	7,807	3,721	15,118
Moose Mountain	School/Youth	1,581	1,357	1,698	1,588	2,066	1,918
	Casual	6,363	7,708	8,418	10,435	12,638	10,427
	Other	195	138	16	43	22	0
	Total	8,139	9,203	10,132	12,066	14,726	12,345
Saskatchewan Landing	School/Youth	452	350		1,056	683	535
	Casual	3,420	3,151		7,011	4,034	2,043
	Other	83	31		50	706	
	Total	3,955	3,532	0	8,117	5,423	2,578
Sub Total Natural Environment	School/Youth	9,312	8,974	11,168	12,106	8,751	11,267
	Casual	41,133	41,919	44,557	76,203	68,305	75,568
	Other	681	921	228	575	830	376
	Total	51,126	51,814	55,953	88,884	77,886	87,211

Table 10: Number of Participants by Visitor Type by Classification (continued)

Recreation Parks		2002	2003	2004	2005	2006	2007
The Battlefords	School/Youth	88					
	Casual	2,176					
	Other						
	Total	2,264	0	0	0	0	0
Buffalo Pound	School/Youth	98	1,972	854	582	1,105	889
	Casual	9,466	15,188	9,822	6,519	6,250	5,366
	Other	0	97	207	0	30	44
	Total	9,564	17,257	10,883	7,101	7,385	6,299
Echo Valley	School/Youth	628	745	440	1,011	1,626	1,067
	Casual	1,879	3,512	3,117	5,113	3,437	6,923
	Other		43	0	26	110	32
	Total	2,507	4,300	3,557	6,150	5,173	8,022
Pike Lake	School/Youth	2,040	740	920	1,476	895	2,045
	Casual	2,398	3,002	4,377	6,996	7,892	9,584
	Other	42	13	0	0	94	0
	Total	4,480	3,755	5,297	8,472	8,881	11,629
Rowan's Ravine	School/Youth						785
	Casual	2,640					
	Other						
	Total	2,640	0	0	0	0	785
Recreation Parks	School/Youth	2,854	3,457	2,214	3,069	3,626	4,001
	Casual	18,559	21,702	17,316	18,628	17,579	22,658
	Other	42	153	207	26	234	76
	Total	21,455	25,312	19,737	21,723	21,439	26,735
Combined Total Natural Environment and Recreation Park							
	School/Youth	12,166	12,431	13,382	15,175	12,377	15,268
	Casual	59,692	63,621	61,873	94,831	85,884	98,226
	Other	723	1,074	435	601	1,064	452
	Total	72,581	77,126	75,690	110,607	99,325	113,946
Historic Park Totals							
	School/Youth	5,936	5,263	5,005	5,095	5,308	4,990
	Casual	9,970	9,894	10,118	10,076	9,343	11,170
	Other	874	1,147	910	1,398	792	670
	Total	16,780	16,304	16,033	16,569	15,443	16,830
Combined Totals Natural Environment, Recreation and Historic Parks							
	School/Youth	18,102	17,694	18,387	20,270	17,685	20,258
	Casual	69,662	73,515	71,991	104,907	95,227	109,396
	Other	1,597	2,221	1,345	1,999	1,856	1,122
	Total	89,361	93,430	91,723	127,176	114,768	130,776

Table 10: Percentage Change – 2006 to 2007 and 5 yr average (continued)

	Visitor	% change 2006 to 07		5 year average		% of change	
	Type	Programs	Participants	Programs	Participants	Programs	Participants
Natural Environment Parks							
Cypress Hills	School/Youth	76.3%	50.3%	214	4,647	7.9%	4.4%
	Casual	-7.9%	17.8%	194	18,132	-10.3%	49.0%
	Other	87.2%	681.0%	6	217	45.2%	51.2%
	Total	28.6%	22.8%	414	22,996	0.0%	40.0%
Douglas	School/Youth	75.0%	128.8%	6	104	20.7%	44.9%
	Casual	-3.3%	-2.9%	51	1,594	13.7%	55.8%
	Other	0.0%	0.0%	0	0		
	Total	1.6%	0.4%	57	1,698	14.4%	55.1%
Duck Mountain	School/Youth	63.2%	20.0%	26	529	136.6%	46.2%
	Casual	-18.7%	17.0%	118	6,434	-37.5%	56.2%
	Other	0.0%	0.0%	4	90	-100.0%	-100.0%
	Total	5.4%	17.2%	149	7,053	-8.5%	53.4%
Good Spirit Lake	School/Youth	-14.6%	125.1%	34	591	2.3%	51.9%
	Casual	34.3%	-50.3%	72	5,659	29.8%	-30.1%
	Other	0.0%	0.0%	1	4	-100.0%	-100.0%
	Total	16.2%	-41.9%	107	6,254	20.3%	-22.4%
Greenwater Lake	School/Youth	64.5%	38.7%	33	834	52.7%	39.2%
	Casual	-11.7%	-18.8%	72	5,082	-26.8%	7.4%
	Other	8.3%	0.0%	1	30	150.0%	57.9%
	Total	14.0%	-12.3%	107	5,947	-0.6%	12.1%
Lac La Ronge	School/Youth	UA	UA	1	46		
	Casual	UA	UA	3	56		
	Other	UA	UA	1	27		
	Total	UA	UA	6	129	-100.0%	-100.0%
Meadow Lake	School/Youth	40.0%	18.3%	40	1,144	75.9%	-14.5%
	Casual	141.2%	391.3%	82	4,831	200.0%	192.7%
	Other			9	22	-100.0%	-100.0%
	Total	106.5%	306.3%	131	5,997	142.0%	152.1%
Moose Mountain	School/Youth	-11.5%	-7.2%	114	1,658	1.2%	15.7%
	Casual	-3.6%	-17.5%	115	9,112	16.3%	14.4%
	Other			6	83	-100.0%	-100.0%
	Total	-7.8%	-16.2%	234	10,853	6.2%	13.7%
Saskatchewan Landing	School/Youth	27.3%	-21.7%	19	508	50.5%	5.3%
	Casual	45.2%	-49.4%	51	3,523	77.9%	-42.0%
	Other			17	174	-100.0%	-100.0%
	Total	10.3%	-52.5%	86	4,205	37.2%	-38.7%

Table 10: Percentage Change - 2006 and 5 yr average (continued)

	Visitor	% change 2006 to 07		5 year average		% of change	
	Type	Programs	Participants	Programs	Participants	Programs	Participants
Sub Total	School/Youth	34.0%	28.8%	487	10,062	23.0%	12.0%
Natural Environment	Casual	19.4%	10.6%	759	54,423	21.5%	38.9%
	Other	-62.1%	-54.7%	44	647	-75.1%	-41.9%
	Total	22.7%	12.0%	1,291	65,133	18.8%	33.9%
Recreation Parks							
The Battlefords	School/Youth	NA	NA	1	18		
	Casual	NA	NA	7	435		
	Other	NA	NA	0	0		
	Total	NA	NA	8	453		
Buffalo Pound	School/Youth	-18.5%	-19.5%	34	922	30.2%	-3.6%
	Casual	-12.7%	-14.1%	108	9,449	-17.9%	-43.2%
	Other	200.0%	46.7%	2	67	36.4%	-34.1%
	Total	-13.4%	-14.7%	144	10,438	-5.8%	-39.7%
Echo Valley	School/Youth	-29.9%	-34.4%	54	890	13.4%	19.9%
	Casual	-41.0%	101.4%	96	3,412	-49.1%	102.9%
	Other	-62.5%	-70.9%	3	36	15.4%	-10.6%
	Total	-36.5%	55.1%	153	4,337	-26.0%	84.9%
Pike Lake	School/Youth	120.3%	128.5%	69	1,214	120.3%	68.4%
	Casual	16.3%	21.4%	100	4,933	57.6%	94.3%
	Other			1	30		
	Total	49.3%	30.9%	170	6,177	81.8%	88.3%
Rowan's Ravine	School/Youth	NA		0	0		
	Casual			15	528	48.6%	48.7%
	Other	NA		0	0		
	Total	NA		15	528	48.6%	48.7%
Recreation Parks	School/Youth	22.4%	10.3%	157	3,044	63.5%	31.4%
	Casual	-0.9%	28.9%	326	18,757	-2.8%	20.8%
	Other	-50.0%	-67.5%	6	132	-3.2%	-42.6%
Sub Total	Total	7.0%	24.7%	490	21,933	18.5%	21.9%
Combined Total Natural Environment and Recreation Park							
	School/Youth	30.3%	18.9%	644	13,106	32.9%	16.5%
	Casual	13.4%	14.4%	1,086	73,180	14.2%	34.2%
	Other	-58.5%	-57.5%	50	779	-66.3%	-42.0%
	Total	18.0%	14.7%	1,780	87,066	18.7%	30.9%
Historic Park Totals							
	School/Youth	-0.7%	-6.0%	148	5,321	0.1%	-6.2%
	Casual	NA	19.6%	0	9,880	NA	13.1%
	Other	-2.7%	-15.4%	37	1,024	-1.6%	-34.6%
	Total	-1.1%	9.0%	183	16,226	0.4%	3.7%
Combined Totals Natural Environment, Recreation and Historic Parks							
	School/Youth	24.6%	14.5%	792	18,428	26.8%	9.9%
	Casual	13.4%	14.9%	1,086	83,060	14.2%	31.7%
	Other	-32.1%	-39.5%	86	1,804	-38.5%	-37.8%
	Total	16.2%	13.9%	1,963	103,292	17.0%	26.6%

LEASES



COMMERCIAL, CAMPGROUND AND COTTAGE LEASES

Tables 11 and 12 summarize the number of leases issued to private individuals allowing them to operate commercial facilities, campgrounds and day use areas within the provincial parks system.

A total of 85 summer commercial leases were in effect for facilities and services such as rental accommodation, stores, fast food services, boat rentals, riding stables and miniature golf courses. There were 37 commercial leases for campgrounds and/or day use areas in recreation sites and provincial parks, up from 36 in 2006.

Table 11: Summer Commercial Leases Within Provincial Parks and Recreation Sites

Location	2002	2003	2004	2005	2006	2007
PROVINCIAL PARKS						
The Battlefords	4	4	4	4	4	4
Blackstrap	1	1	1	1	1	1
Buffalo Pound	2	2	2	2	2	2
Candle Lake	1	1	1	1	0	0
Clearwater River	1	1	1	1	0	0
Cypress Hills	10	10	9	9	9	9
Danielson	1	1	1	1	2	2
Douglas	1	1	1	1	1	1
Duck Mountain	8	6	5	5	5	5
Echo Valley	1	1	2	2	1	1
Good Spirit Lake	3	3	3	3	3	3
Greenwater Lake	5	5	6	6	6	4
Katepwa Point	0	0	1	1	0	0
Makwa Lake	2	2	1	1	1	2
Meadow Lake	14	15	15	15	15	14
Moose Mountain	10	10	10	10	10	10
Narrow Hills	2	2	2	2	2	2
Pike Lake	3	3	4	4	4	4
Rowan's Ravine	6	6	6	6	6	6
Saskatchewan Landing	5	5	5	5	5	5
RECREATION SITES						
Amisk Lake- Sawmill Bay	1	1	1	1	1	1
Anglin Lake	1	1	1	1	1	1
Elbow Harbour	3	3	3	3	3	3
Nesslin Lake	1	1	1	1	1	1
Valley Centre	1	1	1	1	1	1
Total	88	86	87	87	84	82

Table 12: Campground Leases By Park Land Category

Location	2002	2003	2004	2005	2006	2007
PROVINCIAL PARKS						
Meadow Lake						
Lac Des Iles South	1	1	1	1	1	1
Howe Bay	1	1	1	1	1	1
Sub-Total Provincial Parks:	2	2	2	2	2	2
MAJOR RECREATION SITES						
Besant	1	1	1	1	1	1
Besnard Lake	1	1	1	1	1	1
Bronson Forest - Ministikwan Lake	1	1	1	1	1	1
Delaronde Lake - Zig Zag Bay	1	1	1	1	1	1
East Trout Lake	1	1	1	1	1	1
Etter's Beach	1	1	1	1	1	1
Jan Lake	1	1	1	1	1	1
Little Bear Lake	1	1	1	1	1	1
McBride Lake	1	1	1	1	1	1
Nesslin Lake	1	1	1	1	1	1
Turtle Lake	1	1	1	1	1	1
Weyakwin Lake - Ramsey Bay	1	1	1	1	1	1
Whiteswan Lake - Whelan Bay	0	0	1	1	1	1
Sub-Total Major:	13	12	13	13	13	13
CAMPGROUND RECREATION SITES						
Big Sandy Lake***	0	0	0	0	1	1
Big Shell Lake	1	1	1	1	0	1
Bird's Point	1	1	1	1	1	1
Canoe Lake - Cole Bay	1	1	1	1	1	1
Cowan Dam	1	1	1	1	0	0
D. Gerbrandt	1	1	1	1	1	1
Deschambault Lake - South-east Arm	1	1	1	1	1	1
Dore Lake - Michel Point	1	1	1	1	1	1
Dore Lake - Tower Beach	1	1	1	1	1	1
Gordon Lake	1	1	1	1	1	1
Hackett Lake	1	1	1	1	1	1
Little Amyot Lake	1	1	1	1	0	1
McLean	1	0	0	0	0	0
Ness Lake	1	1	1	1	1	1
Piprell Lake	1	1	1	1	1	1
Piwei River	1	1	1	1	1	1
Ruby Lake	1	1	1	1	0	0
Sturgeon River **	1	1	1	1	1	1
Tobin Lake - Carroll's Cove	1	1	1	1	1	1
Wapiti	0	1	1	1	1	1
Sub-Total Campground:	17	17	17	17	14	17

Table 12: Campground Leases By Park Land Category (cont.)

Location	2002	2003	2004	2005	2006	2007
DAY USE AREA RECREATION SITES****						
Cypress Lake	1	1	1	1	1	1
Dagg Creek	1	1	1	1	1	1
Greenbush River	1	1	1	1	1	1
Langenburg	1	1	1	1	1	1
Otapasso Trails	1	0	0	0	0	0
Riverhurst	1	1	1	1	1	1
Saginas Lake	1	1	1	1	1	1
Shirley Lake	0	0	0	0	0	0
Top Lake	0	0	0	0	0	0
Sub-Total Day Use Area:	8	7	7	7	7	6
Total	40	38	39	39	36	38

Source: Parks Service, Business & Tourism Services

** New development started in 1999

*** Reduced to lake access only, no lease in place

**** Includes: picnic sites, lake access sites and trails

Table 13: Cottage Leases in Provincial Parks and Recreation Sites

Location	2007
Provincial Park	
The Battlefords	42
Cypress Hills	204
Duck Mountain	325
Good Spirit Lake	152
Greenwater Lake	198
Lac La Ronge	254
Meadow Lake	239
Moose Mountain	450
Narrow Hills	95
Pike Lake	135
Saskatchewan Landing	50
Recreation Site	
Lovering Lake	17
Total	2,161

APPENDICES



Appendix One: Multiplier for Campground Visits

In calculating visits for campgrounds, the following multipliers are used for the parks noted. These multipliers are based on the average group size shown on campground reservations/permits in 2003. For those locations where park specific data is not available the average group size is used as the multiplier.

LOCATION	Multiplier
Blackstrap	3.7
Buffalo Pound	3.6
Candle Lake	3.6
Cypress Hills	3.2
Douglas	3.4
Duck Mountain	3.6
Echo Valley	3.2
Good Spirit Lake	3.5
Greenwater Lake	3.5
Makwa Lake	3.5
Meadow Lake	3.6
Moose Mountain	4.0
Pike Lake	3.8
Rowan's Ravine	3.4
Saskatchewan Landing	2.9
The Battlefords	3.4
Emma Lake Recreation Site	3.5
Chitek Lake Recreation Site	3.2
Overall Average	3.5

CAMPING PERMITS	2007 Fee with GST
Group Camping	
Group registration	\$15.00
Per unit	
With Service Centre	20.00
- Electrical	15.00
- Non-electrical	
Without Service Centre	18.00
- Electrical	13.00
- Non-electrical	same
Minimum charge	
School/Youth groups per night (GST exempt)	1/person
Seasonal Camping	
Full season	
With service centre	
Fully Serviced	\$1,020.00
Electrical	830.00
Non electrical	540.00
Without service centre	
Electrical	710.00
Non electrical	420.00
Pro-rated	
With service centre	
Electrical	540.00
Non electrical	410.00
Without service centre	
Electrical	470.00
Non electrical	330.00
Monthly	
Level One*	
With service centre	
Electrical	465.00
Non electrical	350.00
Without service centre	
Electrical	410.00
Non electrical	290.00
Level Two*	
With service centre	
Electrical	310.00
Non electrical	230.00
Without service centre	
Electrical	250.00
Non electrical	175.00
* Levels are determined by the park based on location/services/facilities.	
Pro-rated season dates may be amended by operational procedure	

CAMPFIRE PERMITS	2007 Fee with GST
Daily	3.00
Three Day	7.00
Weekly	15.00
Annual	75.00