



Ministry of
Tourism, Parks,
Culture and Sport

Parks Service



SASKATCHEWAN
PARKS

**2008 Summer Visitation and Outdoor Recreation
Statistical Report**

TABLE OF CONTENTS

FOREWORD		3
MAP OF SASKATCHEWAN PARKS		4
SUMMARY OF PROVINCIAL PARK VISITATION FOR 2008		5
METHODOLOGY		6
TOTAL VISITS		8
Figure 1:	Provincial Parks Recorded Visits 1994 to 2008	9
Table 1:	Saskatchewan Provincial Parks Estimated Total Visits	10
ENTRY		12
Entry Permit Definitions		13
Figure 2:	Total Entry Permits Issued 2003 to 2008	14
Figure 3:	Transferable Entry Permits Issued 2003 to 2008	14
Figure 4:	Daily Entry Permits Issued 2003 to 2008	14
Figure 5:	Three-Day Permits Issued 2003 to 2008	15
Figure 6:	Weekly Permits Issued from 2003 to 2008	15
Figure 7:	Seniors Free Entry Permits Issued	15
Table 2:	Entry Permits by Park Classification	16
Table 2a:	Senior Entry Pass	20
CAMPING		21
Camping Permit Definitions		22
Figure 8:	Total Camping Permit Days 2003 to 2008	23
Figure 9:	Total Camping Permit Days 1994 to 2008	23
Figure 10:	Total Youth Permit Days 2003 to 2008	24
Figure 11:	Regular and Reservation Camping Permit Days 2003 to 2008	24
Figure 12:	Seasonal and Monthly Camping Permit Days 2003 to 2008	25
Table 3:	Camping Permit Days by Park Classification	25
Table 4:	Provincial Recreation Site Campgrounds – Permit Days	30
Table 5:	Total Reported Camping permit days	32
Table 5a:	May Long Weekend Camping Permit Days	32
Table 5b:	May Long Weekend Compliance Comparison 2007 to 2008	33
Table 6:	Seasonal Camping Program	34
Campfire Permits and Permit Days		35
Table 7:	Campfire Permits Issued, Permit Days	36
PROGRAMS		37
Figure 13:	Total Visits Including Visitor Types for Historic Parks	38
Table 8:	Historic Park Interpretive Programs and Participants	39
Figure 14:	Comparison 2007 to 2008 of School Group Use	40
Figure 15:	Comparison 2007 to 2008 of Student Use of Programs	40
Table 9:	School/Other Youth Group Programs	41
Figure 16:	Conducted Program Use by Visitor Type	44
Table 10:	Programs and Participants by Park Classification	45
LEASES		51
Table 11:	Summer Commercial Leases	52
Table 12:	Campground Leases	53
Table 13:	Cottage Leases	54
APPENDICES		55
Appendix One:	Camper Day Multiplier	56
Appendix Two:	Provincial Parks Rates and Fees for Entry and Camping	57

FOREWORD

This report provides summarized information and park-by-park detail on visitation, entry permits, camping permits, program use and leases in effect in Saskatchewan Provincial Parks and Recreation Sites for the summer of 2008.

The report describes the recorded uses of provincial park land for the 2008 summer operating season, from May 16, (Victoria Day weekend) to September 1 (Labour Day weekend) inclusive. The report also includes camping activity that occurred from mid-April to October 31.

Note: not all visits to provincial parks are recorded. There are 196 discrete parcels of land in the provincial parks system, and services are provided to visitors on 150 of them. Visitation statistics are recorded for 35 of the more-visited provincial parks and recreation sites. Camping statistics are recorded for 21 provincial parks and 14 provincial recreation sites. No statistics are recorded for locations with little to no known usage.



- Shield** - Forest, Rock, Water
- Mixed Wood** - Forests
- Grassland & Aspen Parkland** - Prairie

Provincial Park Lands

Provincial Parks and Recreation Sites

Map #	Park	Page #
1	Anglin Lake	6
2	Athabasca Sand Dunes	6
3	Blackstrap	6
4	Bronson Forest	6
5	Buffalo Pound	7
6	Candle Lake	7
7	Chitek Lake	7
8	Clarence-Steepbank Lakes	8
9	Clearwater River	8
10	Crooked Lake	8
11	Cypress Hills	8
12	Danielson	9
13	Douglas	9
14	Duck Mountain	9
15	Echo Valley	10
16	Emma Lake	10
17	Good Spirit Lake	10
18	Greenwater Lake	11
19	Katepwa Point	11
20	Lac La Ronge	11
21	Makwa Lake	12
22	Meadow Lake	12
23	Moose Mountain	13
24	Narrow Hills	13
25	Pike Lake	13
26	Regina Beach	13
27	Rowan's Ravine	14
28	Saskatchewan Landing	14
29	The Battlefords	14
30	Wildcat Hill	15

Provincial Historic Parks

31	Cannington Manor	16
32	Cumberland House	16
33	Fort Carlton	16
34	Fort Pitt	16
35	Last Mountain House	16
36	St. Victor Petroglyphs	17
37	Steele Narrows	17
38	Touchwood Hills Post	17
39	Wood Mountain Post	17

SUMMARY OF PROVINCIAL PARK VISITATION FOR 2008

Visitation was above the five-year average in almost all categories.

Attendance

- 3,260,235 visits were recorded, a 7.7 per cent increase from 2007 and 27.5 per cent above the five-year average, (note: visitation is deemed to be under-estimated; calculations are based on cottage, entry and camping data from 21 locations plus camping data from 14 other locations).

Entry Permits

- 159,032 entry permits were issued, 3.6 per cent from 2007 and 11.0 per cent over the five-year average.
- 15,091 free senior entry permits were issued. Entry is free to Saskatchewan residents age 65 and over.
- Daily entry permits issued were up by 2.3 per cent from 2007 and 9.2 per cent above the five-year average.
- Three-day entry permits issued were down by 1.2 per cent from 2007 and 5.1 per cent below the five-year average.
- Weekly entry permits issued were up by 2.0 per cent from 2007 and 9.3 per cent above the five-year average.
- Annual permits issued were up by 13.3 per cent from 2007 and 36.1 per cent above the five-year average.

Campground Use

- 354,046 camping permit days were recorded in 2008, up 8.6 per cent over 2007 and 22.2 per cent above the five-year average.
- Of these permit days:
 - 13,736 student/youth permit days were recorded, up 0.4 per cent from 2007 and down 3.3 per cent from the five-year average;
 - 85,250 permit days were calculated for seasonal camping, up 2.0 per cent from 2007 and up 13.1 per cent from the five-year average; and
 - 11,400 permit days were calculated for monthly camping, down 8.7 per cent from 2007 and up 53.6 per cent from the five-year average.

Program Use

- 108,062 participated in programs, down 17.4 per cent from 2007.
- 378 school/youth groups and 12,678 students/youth participated in interpretive programs. The number of groups was down 13.5 per cent from 2007; the number of students was down 17.6 per cent.

METHODOLOGY

Data Sources

Visit estimates are derived from permit sales, supplemented by vehicle count information and actual person counts where permits are not sold. Permit sales information is collected from cash registers and the Reservation Operating System, and reported through the Saskatchewan Environment Financial Management System Revenue Module. The system records all transactions for visitor use in provincial parks, including one recreation site that charges entry fees, (Emma Lake).

Calculations

Where entry permits are sold, visits are calculated by adding:

- (1) **Total visitor days for day users**
plus
- (2) **Total visitor days for campers**
plus
- (3) **Total visitor days for cottages**
plus
- (4) **Total visitor days for bus visitors**

(1) Day Use Visitor Days

- number of daily entry permits x one
- number of three-day entry permits x three
- number of weekly entry permits x seven
- number of transferable entry permits x 15, less total camping permit days, plus seasonal camping permit days
- note: to avoid double counting campers who require an entry permit, camping permit days, (see below, under camping visitor days) are subtracted from the day use data; however, because seasonal campers do not have to purchase an entry permit, their permit days are added back into the total
- the average group size is estimated at three, per The 1990 Visitor Survey and The 1990 Entry Gate Survey

(2) Camping Visitor Days

- camping permit days x average size camping group (varies by campground as shown in **Appendix 1**, derived from 2003 campground use data) school groups
- camping permit days: reflects number of campsites used in any campground; includes regular, reservation, self-registration, monthly and seasonal
- calculation of seasonal permit days:
 - full seasonal permits: number of permits x 110 days
 - pro-rated seasonal permits: number of permits x 55 days

(3) Cottage Visitor Days

- Number of cottages x 40 visit days per season x three people per cottage

(4) Bus Visitor Days

- number of bus permits issued x 40 persons per bus

METHODOLOGY (continued)

Where entry permits are not sold, visits are estimated through a combination of camper visitor days, cottage visitor days, vehicle counters and observations of past use in comparison to the current year.

At four provincial historic parks, visitation is determined by actual person counts as recorded on hand counters.

Entry Permit Data

Information was collected for each of the nine types of entry permit issued, from the Saskatchewan Environment's, Financial Management System - Revenue Module.

Camping Permit Data

Camping statistics are obtained primarily from camping permits issued by field staff through the Reservation Operating System. Information is obtained from the Saskatchewan Environment's, Financial Management System - Revenue Module.

Self-Registration Camping Permit Days

The total self-registration camping revenue for a park or site \div daily registration fee, regular or discount where appropriate (excluding GST). Given that this method depends on the accuracy of the camper's self declared fees, that data may not be reliable and consistent. However, it has the advantage of providing information from parks that are known to have visitation, but have no entry or campground office staff to record use, and so would otherwise not be included.

Program Statistics

Program use data is gathered by actual person counts at provincial historic parks and by estimates of program participants for the remaining programs offered throughout the provincial parks system. Given the collection methodologies for program data, only data for provincial historic parks and school programming can be considered reliable and consistent. Program data for other park locations is an indication of program use.

Total Visits



PROVINCIAL PARKS SYSTEM YEAR OVER YEAR VISITS

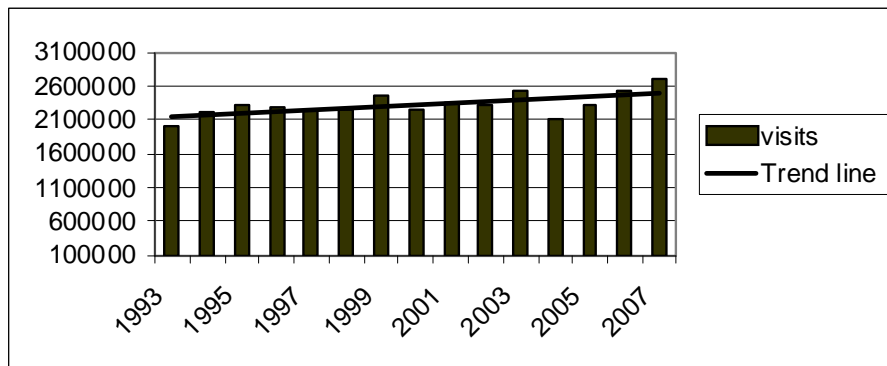
In 2008, approximately 3,260,235 visits occurred at the 35 provincial parks and recreation sites where park visits have traditionally been tracked.

Note: This figure does not include visits to:

- recreation sites, except Emma Lake;
- any of the historic parks and sites that do not provide conducted programs; and
- wilderness parks.

For example, visits by campers in recreation sites, (other than Emma Lake) that have camping permit records are not included; the estimated 100,000 plus visits to Regina Beach Recreation Site are not included.

Figure 1: Provincial Parks Recorded Visits 1993 to 2008



As shown in **Table 1**, most parks saw increases in visitation with only six parks showing a decrease. The greatest increase in use occurred at Blackstrap, Candle Lake, Crooked Lake, The Battlefords, Buffalo Pound, and Rowan's Ravine. Each of these parks saw an increase of over 15 per cent from 2007.

TABLE 1: Saskatchewan Provincial Parks - Estimated Total Visits – April to September

Location	2003	2004	2005	2006*	2007*	2008	% Change 2007/2008	5 Year Avg 2003-2007	% Change 2008/Five Year Avg
Based on Permit Analysis									
Blackstrap	56,237	37,835	43,500	44,432	55,853	69,524	24.5%	47,571	46.1%
Buffalo Pound	97,895	72,377	78,966	95,159	105,240	124,553	18.4%	89,928	38.5%
Candle Lake	65,391	54,956	54,288	85,133	83,390	101,723	22.0%	68,631	48.2%
Cypress Hills	204,857	173,735	188,791	243,270	258,133	274,486	6.3%	213,757	28.4%
Douglas	54,265	35,073	40,038	65,627	67,144	75,382	12.3%	52,429	43.8%
Duck Mountain	181,155	170,449	178,685	205,822	225,277	241,524	7.2%	192,278	25.6%
Echo Valley	103,126	78,263	93,250	117,651	134,319	132,617	-1.3%	105,322	25.9%
Emma Lake	41,747	35,303	38,335	54,042	57,707	63,870	10.7%	45,427	40.6%
Good Spirit Lake	96,058	76,576	87,754	111,176	126,828	142,372	12.3%	99,678	42.8%
Greenwater Lake	123,671	106,689	110,230	144,838	147,411	158,375	7.4%	126,568	25.1%
Makwa Lake	76,211	69,108	78,283	99,629	104,079	114,323	9.8%	85,462	33.8%
Meadow Lake	281,224	204,506	228,569	309,896	353,592	351,664	-0.5%	275,557	27.6%
Moose Mountain	226,027	198,726	214,686	237,164	255,665	262,841	2.8%	226,453	16.1%
Pike Lake	158,960	125,596	142,177	177,392	185,790	207,432	11.6%	157,983	31.3%
Rowan's Ravine	93,007	78,616	94,515	112,309	130,864	153,901	17.6%	101,862	51.1%
Saskatchewan Landing	107,009	91,110	100,119	141,593	160,117	168,282	5.1%	119,990	40.2%
The Battlefords	90,555	63,516	85,690	122,462	152,576	185,634	21.7%	102,960	80.3%
Total	2,057,395	1,672,434	1,857,876	2,367,593	2,603,985	2,828,504	8.6%	2,111,857	33.9%
Based on Estimates									
Crooked Lake	47,000	40,000	38,500	19,897	27,470	33,458	21.8%	34,574	-3.2%
Danielson	94,459	96,000	118,000	38,974	48,989	54,836	11.9%	79,285	-30.8%
Katepwa Point	99,000	93,000	95,000	102,000	102,000	102,000	0.0%	98,200	3.9%
Lac La Ronge	123,500	114,000	123,000	107,000	107,000	107,000	0.0%	114,900	-6.9%
Narrow Hills	54,726	48,000	47,000	49,581	62,435	60,380	-3.3%	52,348	15.3%
Total	418,685	391,000	421,500	317,453	347,894	357,673	2.8%	379,306	-5.7%

TABLE 1: Saskatchewan Provincial Parks - Estimated Total Visits – April to September (continued)

Location	2003	2004	2005	2006*	2007*	2008	% Change 2007/2008	5 Year Avg 2003-2007	% Change 2008/Five Year Avg
Based on Hand Counters									
Cannington Manor	4,146	4,158	4,494	3,124	3,994	3,233	-19.1%	3,983	-18.8%
Fort Carlton	9,531	8,803	8,971	9,108	10,114	7,552	-25.3%	9,305	-18.8%
Last Mountain House	1,171	972	1,035	919	952	1,023	7.5%	1,010	1.3%
Wood Mountain Post	1,456	2,100	2,069	2,292	1,770	1,500	-15.3%	1,937	-22.6%
Total	16,304	16,033	16,569	15,443	16,830	13,308	-20.9%	16,236	-18.0%
Other Locations	45,990	44,865	43,355	60,750	60,750	60,750	0.0%	51,142	18.8%
GRAND TOTAL	2,538,374	2,124,332	2,339,300	2,759,104	3,025,938	3,260,235	7.7%	2,557,410	27.5%
<p>* Data differs from those previously reported due to clean up of source data "Other locations" adjusted to reflect vendor sales which were omitted in past reports. This also includes previously named "Transferable Adjustment" data which represents sales of Transferable permits sold at CAA, etc.</p>									

Entry



PROVINCIAL PARK ENTRY PERMIT DEFINITIONS

All vehicles entering developed portions of provincial parks are required to have a valid entry permit. For increased convenience to the public, transferable annual entry permits are available for purchase at ministry offices outside provincial parks.

Transferable Annual Entry Permit

A permit issued upon payment to allow vehicle entry to all provincial parks and recreation sites from April 1 to March 31 of the following year. This permit may be transferred to any vehicle and must be displayed on the inside of a window on the left hand side of the vehicle.

Daily Entry Permit

Permit issued upon payment to allow vehicle entry to a provincial park or recreation site for a one-day period. This permit is valid until 2 p.m. of the date written on the permit, and must be affixed to the inside of a window on the left hand side of the vehicle.

Three-Day Permit

A permit issued upon payment to allow vehicle entry to a provincial park or recreation site for a three-day period. This permit is valid until 2 p.m. of the date written on the permit, and must be affixed to the inside of a window on the left hand side of the vehicle.

Weekly Permit

A permit issued upon payment to allow vehicle entry to a provincial park or recreation site for a seven-day period. This permit is valid until 2 p.m. of the date written on the permit, and must be affixed to the inside of the window on the left hand side of the vehicle.

One-Hour Permit

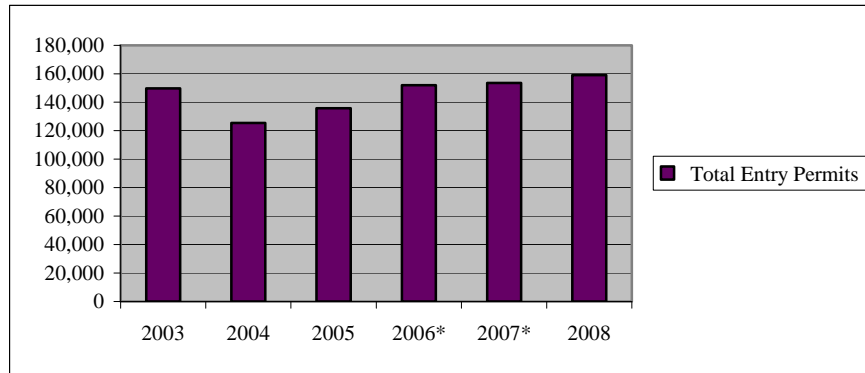
A courtesy permit issued to a driver of a vehicle who delivers goods or services to a provincial park; to allow a driver to transport persons to and from institutional camps, day-use areas or recreation programs within a provincial park or recreation site; for courtesy access to the park for traditional resource use activities. The permit does not allow use of park facilities.

This report does not include statistics on one-hour permits.

ENTRY PERMIT STATISTICS

As shown in **Table 2**, 159,032 entry permits were issued in 2008, up 3.6 per cent from 2007 and 11.0 per cent above the five-year average.

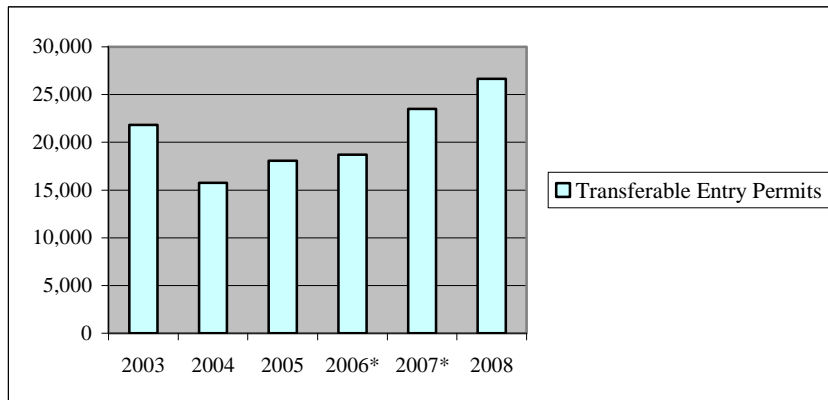
Figure 2: Total Entry Permits Issued 2003 to 2008



* Data differs from those previously reported due to clean up of source data

Transferable entry permits issued increased by 13.3 per cent from 2007 and by 36.1 per cent from the five-year average.

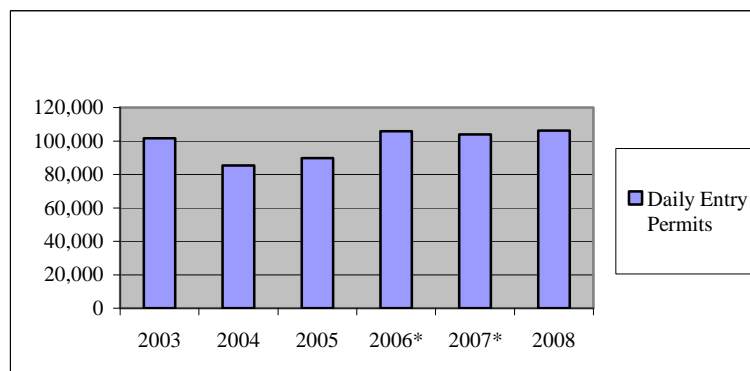
Figure 3: Transferable (Annual) Entry Permits Issued 2003 to 2008



* Data differs from those previously reported due to clean up of source data

Daily entry permits issued were up 2.3 per cent from 2007 and 9.2 per cent above the five-year average.

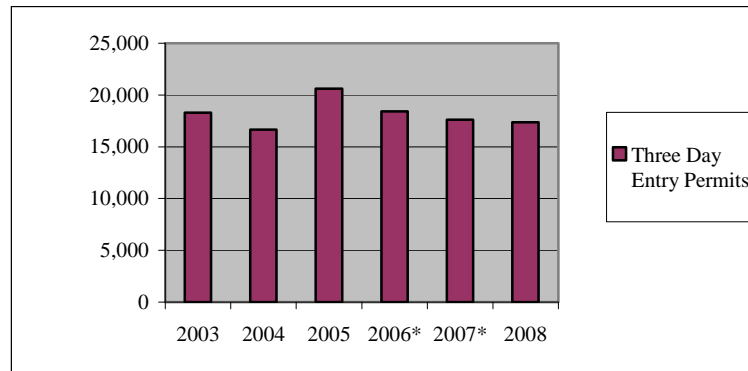
Figure 4: Daily Entry Permits Issued 2003 to 2008



* Data differs from those previously reported due to clean up of source data

Three-day entry permits issued were down by 1.2 per cent over 2007 and were 5.1 per cent below the five-year average.

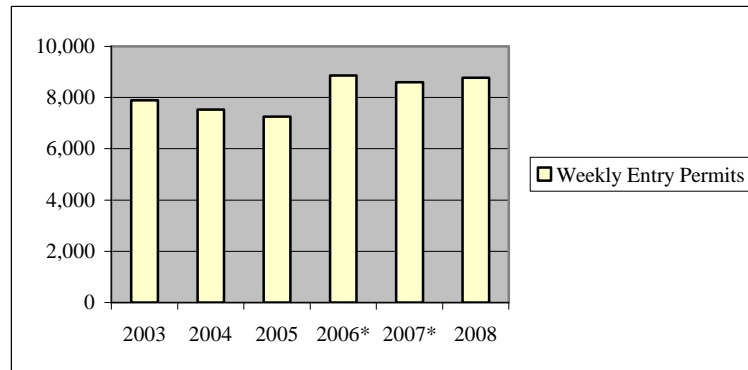
Figure 5: Three-Day Entry Permits Issued 2003-2008



* Data differs from those previously reported due to clean up of source data

Weekly entry permits issued increased by 2.0 per cent from 2007 and show a 9.3 per cent increase from the five-year average.

Figure 6: Weekly Entry Permits Issued From 2003 to 2008



* Data differs from those previously reported due to clean up of source data

In 2007, the government announced that free entry for Saskatchewan residents 65 and older will be continued for the next four years. In 2008, 15,091 free seniors' permits were issued. Of these, 7,125 were daily permits; 6,825 were annual permits; 695 were three-day entry permits and 446 were weekly permits.

Figure 7: Seniors' Free Entry Permits Issued

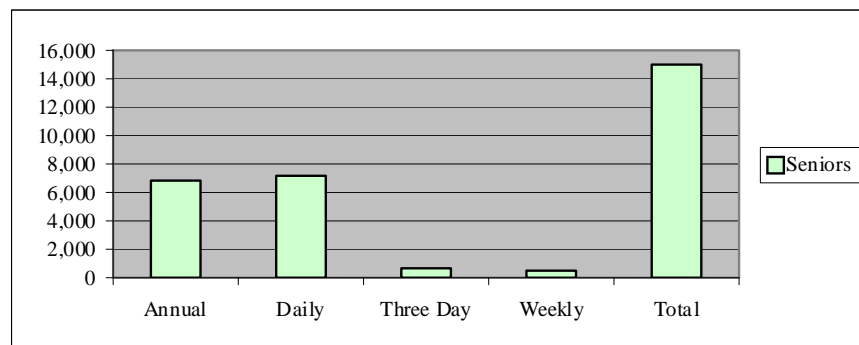


Table 2: Entry Permits Issued by Park Classification

	2003	2004	2005	2006*	2007*	2008	Per cent change 2008 from 2007	Previous five year average 2003-2007	Per cent change 2008 from five year average
NATURAL ENVIRONMENT PARKS									
Cypress Hills									
Daily	11,778	10,895	10,916	11,908	12,105	11,037	-8.8%	11,520	-4.2%
Three Day	3,674	3,493	3,892	3,492	3,553	3,640	2.4%	3,621	0.5%
Weekly	1,401	1,328	1,246	1,440	1,446	1,664	15.1%	1,372	21.3%
Transferable	1,551	1,120	1,362	1,239	1,445	1,684	16.5%	1,343	25.4%
Sub Total	18,404	16,836	17,416	18,079	18,549	18,025	-2.8%	17,857	0.9%
Douglas									
Daily	2,472	2,252	2,195	2,626	2,263	2,472	9.2%	2,362	4.7%
Three Day	452	527	616	594	542	513	-5.4%	546	-6.1%
Weekly	159	196	184	176	206	160	-22.3%	184	-13.1%
Transferable	566	367	444	496	502	667	32.9%	475	40.4%
Sub Total	3,649	3,342	3,439	3,892	3,513	3,812	8.5%	3,567	6.9%
Duck Mountain									
Daily	6,832	6,033	5,775	6,892	6,480	6,150	-5.1%	6,402	-3.9%
Three Day	1,157	1,076	1,477	1,156	1,218	1,116	-8.4%	1,217	-8.3%
Weekly	480	504	484	597	618	763	23.5%	537	42.2%
Transferable	1,568	1,198	1,298	1,271	1,598	1,838	15.0%	1,387	32.6%
Sub Total	10,037	8,811	9,034	9,916	9,914	9,867	-0.5%	9,542	3.4%
Good Spirit Lake									
Daily	4,829	3,548	3,927	5,833	5,421	5,533	2.1%	4,712	17.4%
Three Day	508	462	675	664	661	719	8.8%	594	21.0%
Weekly	224	215	198	251	277	265	-4.3%	233	13.7%
Transferable	925	599	706	802	1,126	1,449	28.7%	832	74.2%
Sub Total	6,486	4,824	5,506	7,550	7,485	7,966	6.4%	6,370	25.1%
Greenwater Lake									
Daily	4,946	4,818	4,342	4,926	4,407	4,555	3.4%	4,688	-2.8%
Three Day	1,151	1,090	1,380	1,148	946	1,039	9.8%	1,143	-9.1%
Weekly	540	468	470	648	482	584	21.2%	522	12.0%
Transferable	1,307	1,020	1,038	1,322	1,503	1,584	5.4%	1,238	27.9%
Sub Total	7,944	7,396	7,230	8,044	7,338	7,762	5.8%	7,590	2.3%
Makwa Lake									
Daily	2,186	2,165	1,941	2,002	1,627	1,810	11.2%	1,984	-8.8%
Three Day	594	555	618	538	417	475	13.9%	544	-12.7%
Weekly	374	390	379	413	307	359	16.9%	373	-3.7%
Transferable	823	688	815	722	892	939	5.3%	788	19.2%
Sub Total	3,977	3,798	3,753	3,675	3,243	3,583	10.5%	3,689	-2.9%
Meadow Lake									
Daily	5,825	4,821	5,055	6,455	6,749	6,600	-2.2%	5,781	14.2%
Three Day	2,379	2,143	2,306	2,284	2,229	1,954	-12.3%	2,268	-13.9%
Weekly	2,154	2,074	1,896	2,088	2,248	1,913	-14.9%	2,092	-8.6%
Transferable	2,559	1,629	2,068	2,309	3,023	3,120	3.2%	2,318	34.6%
Sub Total	12,917	10,667	11,325	13,136	14,249	13,587	-4.6%	12,459	9.1%

Table 2: Entry Permits Issued by Park Classification (continued)

	2003	2004	2005	2006*	2007*	2008	Per cent change 2008 from 2007	Previous five year average 2003-2007	Per cent change 2008 from five year average
Meadow Lake									
Daily	5,825	4,821	5,055	6,455	6,749	6,600	-2.2%	5,781	14.2%
Three Day	2,379	2,143	2,306	2,284	2,229	1,954	-12.3%	2,268	-13.9%
Weekly	2,154	2,074	1,896	2,088	2,248	1,913	-14.9%	2,092	-8.6%
Transferable	2,559	1,629	2,068	2,309	3,023	3,120	3.2%	2,318	34.6%
Sub Total	12,917	10,667	11,325	13,136	14,249	13,587	-4.6%	12,459	9.1%
Moose Mountain									
Daily	11,286	9,313	8,851	11,204	10,505	8,957	-14.7%	10,232	-12.5%
Three Day	2,859	2,187	2,779	2,211	1,925	1,421	-26.2%	2,392	-40.6%
Weekly	592	533	490	605	551	516	-6.4%	554	-6.9%
Transferable	1,789	1,386	1,576	1,512	1,924	2,189	13.8%	1,637	33.7%
Sub Total	16,526	13,419	13,696	15,532	14,905	13,083	-12.2%	14,816	-11.7%
Narrow Hills									
Daily	759	483	414	467	507	573	13.0%	526	8.9%
Three Day	270	205	228	233	285	265	-7.0%	244	8.5%
Weekly	135	92	85	141	144	108	-25.0%	119	-9.5%
Transferable	436	170	161	293	510	492	-3.5%	314	56.7%
Sub Total	1,600	950	888	1,134	1,446	1,438	-0.6%	1,204	19.5%
Saskatchewan Landing									
Daily	4,975	4,547	4,675	6,924	6,005	5,557	-7.5%	5,425	2.4%
Three Day	607	531	725	819	779	718	-7.8%	692	3.7%
Weekly	237	208	230	370	372	331	-11.0%	283	16.8%
Transferable	1,274	1,081	1,168	1,293	1,558	1,671	7.3%	1,275	31.1%
Sub Total	7,093	6,367	6,798	9,406	8,714	8,277	-5.0%	7,676	7.8%
RECREATION PARKS									
Blackstrap									
Daily	5,023	4,091	4,737	4,838	5,203	6,612	27.1%	4,778	38.4%
Three Day	163	134	197	149	161	150	-6.8%	161	-6.7%
Weekly	27	30	32	35	23	36	56.5%	29	22.4%
Transferable	794	469	542	480	653	798	22.2%	588	35.8%
Sub Total	6,007	4,724	5,508	5,502	6,040	7,596	25.8%	5,556	36.7%
Buffalo Pound									
Daily	6,561	5,271	5,903	6,176	5,615	6,653	18.5%	5,905	12.7%
Three Day	351	362	441	503	393	584	48.6%	410	42.4%
Weekly	150	114	153	171	165	157	-4.8%	151	4.2%
Transferable	1,166	769	843	758	999	1,246	24.7%	907	37.4%
Sub Total	8,228	6,516	7,340	7,608	7,172	8,640	20.5%	7,373	17.2%
Candle Lake									
Daily	2,541	2,177	2,438	2,995	2,610	3,097	18.7%	2,552	21.3%
Three Day	628	643	728	694	616	621	0.8%	662	-6.2%
Weekly	288	272	281	366	251	313	24.7%	292	7.3%
Transferable	703	516	476	584	735	926	26.0%	603	53.6%
Sub Total	4,160	3,608	3,923	4,639	4,212	4,957	17.7%	4,108	20.7%

Table 2: Entry Permits Issued by Park Classification (continued)

	2003	2004	2005	2006*	2007*	2008	Per cent change 2008 from 2007	Previous five year average 2003- 2007	Per cent change 2008 from five year average
Crooked Lake									
Daily	733	536	592	622	669	753	12.6%	630	19.4%
Three Day	117	102	156	129	98	106	8.2%	120	-12.0%
Weekly	24	20	18	21	23	29	26.1%	21	36.8%
Transferable	157	72	92	100	162	239	47.5%	117	105.0%
Sub Total	1,031	730	858	872	952	1,127	18.4%	889	26.8%
Danielson									
Daily	1,071	955	992	1,054	1,198	1,257	4.9%	1,054	19.3%
Three Day	129	109	183	141	127	152	19.7%	138	10.3%
Weekly	23	26	18	47	36	39	8.3%	30	30.0%
Transferable	321	246	279	274	399	561	40.6%	304	84.7%
Sub Total	1,544	1,336	1,472	1,516	1,760	2,009	14.1%	1,526	31.7%
Echo Valley									
Daily	3,764	3,533	4,024	4,261	4,458	4,320	-3.1%	4,008	7.8%
Three Day	440	499	624	579	578	584	1.0%	544	7.4%
Weekly	91	98	98	104	135	134	-0.7%	105	27.4%
Transferable	792	532	690	840	1,106	1,012	-8.5%	792	27.8%
Sub Total	5,087	4,662	5,436	5,784	6,277	6,050	-3.6%	5,449	11.0%
Pike Lake									
Daily	13,363	9,985	11,866	13,798	14,683	15,414	5.0%	12,739	21.0%
Three Day	890	803	1091	963	934	1,049	12.3%	936	12.0%
Weekly	258	310	354	458	444	470	5.9%	365	28.8%
Transferable	1,471	998	1,136	1,108	1,342	1,642	22.4%	1,211	35.6%
Sub Total	15,982	12,096	14,447	16,327	17,403	18,575	6.7%	15,251	21.8%
Rowan's Ravine									
Daily	3,666	2,918	3,374	3,628	3,633	4,229	16.4%	3,444	22.8%
Three Day	475	477	734	536	543	591	8.8%	553	6.9%
Weekly	178	120	98	198	200	192	-4.0%	159	20.9%
Transferable	727	470	681	718	998	1,209	21.1%	719	68.2%
Sub Total	5,046	3,985	4,887	5,080	5,374	6,221	15.8%	4,874	27.6%
The Battlefords									
Daily	6,505	4,634	5,349	7,060	7,763	8,741	12.6%	6,262	39.6%
Three Day	707	558	892	969	1017	1,162	14.3%	829	40.2%
Weekly	168	124	181	364	335	386	15.2%	234	64.7%
Transferable	948	638	907	1,054	1,441	1,728	19.9%	998	73.2%
Sub Total	8,328	5,954	7,329	9,447	10,556	12,017	13.8%	8,323	44.4%

Table 2: Entry Permits Issued by Park Classification (continued)

	2003	2004	2005	2006*	2007*	2008	Per cent change 2008 from 2007	Previous five year average 2003-2008	Per cent change 2008 from five year average
RECREATION SITES									
Emma Lake									
Daily	2,302	2,097	2,130	1,955	1,748	1,712	-2.1%	2,046	-16.3%
Three Day	538	481	647	451	404	348	-13.9%	504	-31.0%
Weekly	238	230	205	214	175	190	8.6%	212	-10.5%
Transferable	431	318	315	362	430	485	12.8%	371	30.7%
Sub Total	3,509	3,126	3,297	2,982	2,757	2,735	-0.8%	3,134	-12.7%
OTHER LOCATIONS									
Daily	288	314	252	215	215	215	0.0%	257	-16.3%
Three Day	208	228	230	175	175	175	0.0%	203	-13.9%
Weekly	143	176	155	162	162	162	0.0%	160	1.5%
Transferable	1,505	1,483	1,458	1,153	1,153	1,153	0.0%	1,350	-14.6%
Sub Total	2,144	2,201	2,095	1,705	1,705	1,705	0.0%	1,970	-13.5%
TOTAL PARK ENTRY PERMITS ISSUED									
"Other locations" adjusted to reflect vendor sales which were omitted in past reports.									
	2003	2004	2005	2006*	2007*	2008	Per cent change 2007 to 2006	Previous five year average 2003-2007	Per cent change 2007 to five year average
Daily Entry Permits	101,705	85,386	89,748	105,839	103,864	106,247	2.3%	97,308	9.2%
Three Day Entry Permits	18,297	16,665	20,619	18,428	17,601	17,382	-1.2%	18,322	-5.1%
Weekly Entry Permits	7,884	7,528	7,255	8,869	8,600	8,771	2.0%	8,027	9.3%
Transferable Entry Permits	21,813	15,769	18,055	18,690	23,499	26,632	13.3%	19,565	36.1%
Total Entry Permits	149,699	125,348	135,677	151,826	153,564	159,032	3.6%	143,223	11.0%
years 2002 to 2008 has been adjusted to reflect vendor sale data									
* Data differs from those previously reported due to clean up of source data									

Table 2a: Senior Entry Pass

	Annual	Daily	Three Day	Weekly	Total
Battlefords	573	646	0	0	1,219
Blackstrap	59	142	1	1	203
Buffalo Pound	301	532	17	7	857
Candle Lake	346	251	15	11	623
Crooked Lake	83	119	18	2	222
Cypress Hills	303	938	259	148	1,648
Danielson	174	74	13	5	266
Douglas	165	110	6	11	292
Duck Mountain	668	326	34	28	1,056
Echo Valley	308	118	11	3	440
Emma - Murray Point	171	47	0	1	219
Good Spirit	605	513	0	0	1,118
Greenwater Lake	594	643	94	80	1,411
Meadow Lake - Dorintosh	266	191	44	42	543
Meadow Lake - Pierceland	155	41	10	9	215
Makwa/Loon	223	37	2	0	262
Moose Mountain	621	716	94	57	1,488
Narrow Hills	109	3	1	2	115
Pike Lake	379	877	39	29	1,324
Rowans Ravine	371	302	6	1	680
Saskatchewan Landing	351	499	31	9	890
Total Issued	6,825	7,125	695	446	15,091

CAMPING



CAMPING PERMIT DEFINITIONS

Camping facilities are available at all provincial natural environment, recreation and wilderness parks with the exception of Katepwa Point, which is designed for day-use activity. Most recreation sites also offer camping opportunities to the public.

Regular Permit

Issued to an individual or group directly upon payment for a campsite at any provincial park or recreation site.

Reservation Permit

Issued to a camper who uses the Reserve-a-Site program to guarantee a campsite in advance for a specified date.

Self-Registration Permit

The onus is placed upon the camper to register and pay the prescribed fee for the use of a campsite at a self-registration station. Parks Service staff carry out checks to ensure compliance with proper procedure.

Seasonal Permit

Issued to allow an individual to use a designated seasonal site for the entire summer.

Monthly Permit

Issued to allow an individual to use a designated monthly site for a 30-day period of time.

Permit Days

Reflects the number of campsites used in any campground. Regular and reservation permit days are derived from the Reservation Operating System and Revenue Module. Self-registration permit days are estimated for each individual provincial park or recreation site by dividing the total revenue earned by a weighted fee based upon the relative proportion of available site categories.

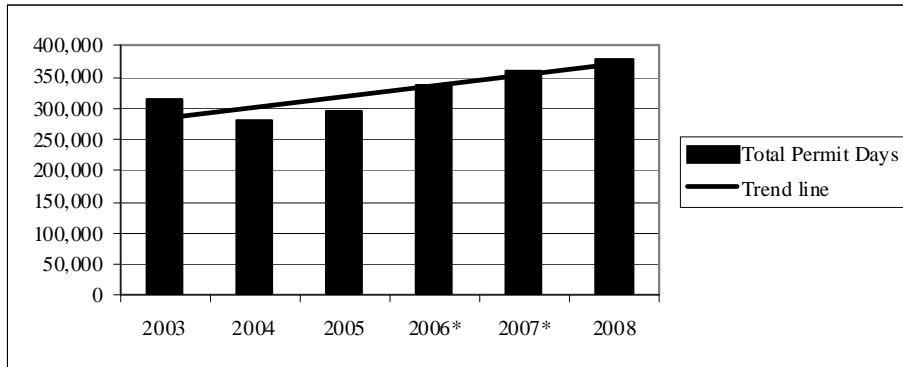
Campsite Designations

- service centre; electric and non-electric
- no service centre; electric and non-electric

CAMPING PERMIT STATISTICS

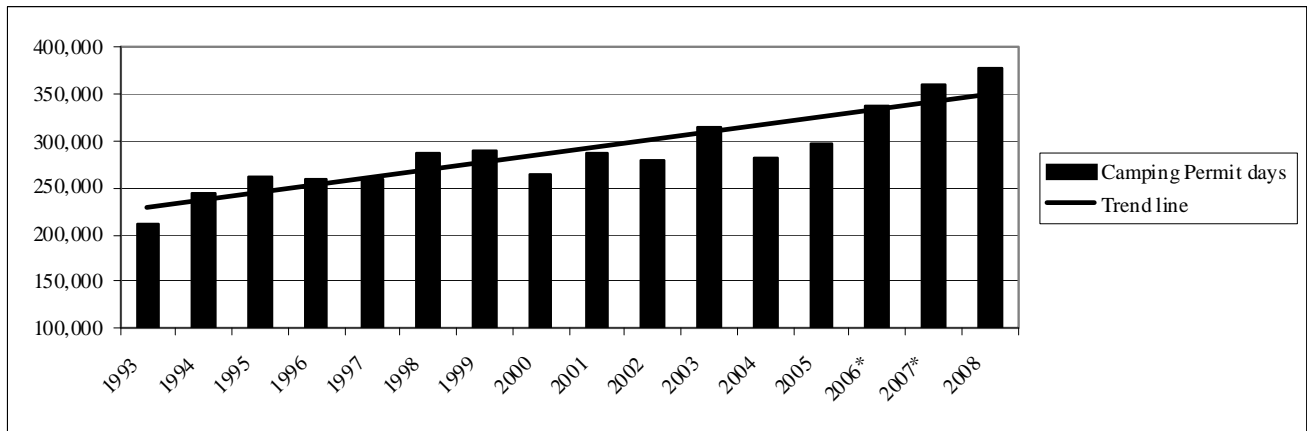
A total of 379,620 camping permit days were recorded in 2008, an increase of 5.0 per cent over 2007 and a 19.2 per cent increase over the five-year average. Camping, as shown in **Figure 8**, is the highest in the last six years and, as shown in **Figure 9**, it is the highest in 15 years.

Figure 8: Total Camping Permit Days 2003 to 2008



* Data differs from those previously reported due to clean up of source data

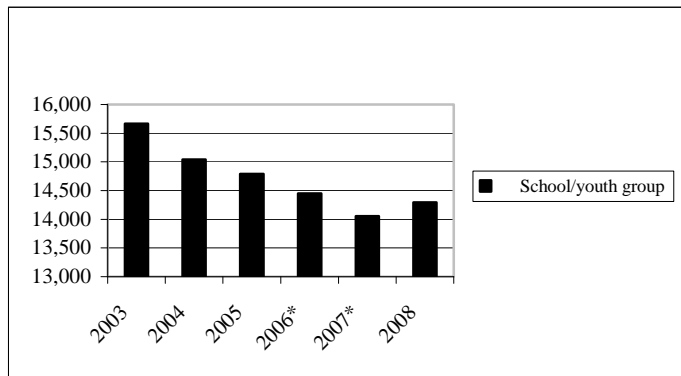
Figure 9: Total Camping Permit Days 1993 to 2008



* Data differs from those previously reported due to clean up of source data

Students or youth enjoyed 14,295 permit days in provincial parks in 2008. School or youth permits issued decreased by 1.7 per cent from 2007 and was 3.4 per cent below the five-year average. As **Figure 10** illustrates, student camping has been gradually decreasing since 2003.

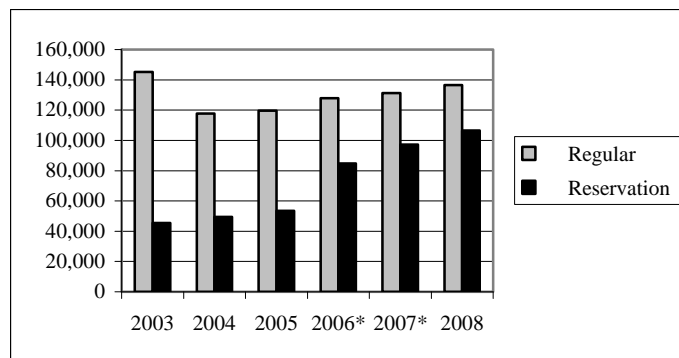
Figure 10: Total School/Youth Permit Days 2003 to 2008



* Data differs from those previously reported due to clean up of source data

As illustrated by **Figure 11**, the use of advanced registration of campsites is increasing. There was a 9.5 per cent increase in advanced registration over 2007 and a 61.2 per cent increase over the five-year average for reservations. Regular camping, which includes group, economy and walk-in camping, increased from 2007 by 4.1 per cent.

Figure 11: Regular and Reservation Camping Permit Days 2003 to 2008



* Data differs from those previously reported due to clean up of source data

As illustrated by **Figure 12**, seasonal camping remains popular and monthly camping is on the increase.

Figure 12: Seasonal and Monthly Camping Permit Days 2003 to 2008

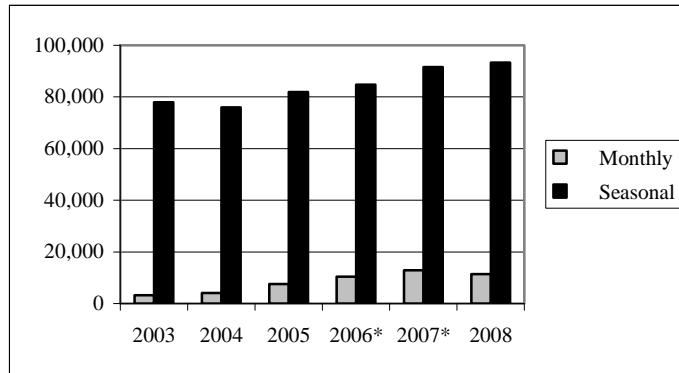


Table 3 provides a breakdown of camping permit days by provincial park. Only one provincial park had fewer camping permit days in 2008 than in 2007. Narrow Hills was down 1.4 per cent from 2007 but up 11.8 per cent from the five-year average.

Fort Carlton saw a 2.7 per cent decrease from 2007 and a 36.3 per cent decrease from the five-year average.

Table 3: Camping Permit Days by Park Classification

	2003	2004	2005	2006*	2007*	2008	% change 2008 from 2007	Previous 5-yr average 2003-2007	% change 2008 from 5-yr average
NATURAL ENVIRONMENT PARKS									
Cypress Hills									
Regular	18,139	17,347	18,358	17,665	19,736	18,150	-8.0%	18,249	-0.5%
Reservation	9,175	8,581	8,754	9,364	10,047	12,874	28.1%	9,184	40.2%
Seasonal	550	550	330	330	0	0		352	-100.0%
Self Registration	1,647	1,163	645	834	250	795	217.8%	908	-12.4%
School/youth group	3,251	3,491	2,232	3,369	3,617	3,249	-10.2%	3,192	1.8%
Total Permit Days	32,762	31,132	30,319	31,562	33,650	35,068	4.2%	31,885	10.0%
Douglas									
Regular	7,220	4,075	4,118	2,495	2,786	3,370	21.0%	4,139	-18.6%
Reservation		2,696	2,691	4,688	4,872	4,864	-0.2%	2,989	62.7%
Monthly	570	1,470	2,850	3,390	4,020	3,870	-3.7%	2,460	57.3%
Seasonal	3,245	0	0	0	0	0		649	0.0%
Self Registration	250	167	130	194	151	313	108.0%	178	75.5%
School/youth group	200	168	149	545	172	173	0.6%	247	-29.9%
Total Permit Days	11,485	8,576	9,938	11,312	12,001	12,590	4.9%	10,662	18.1%

Table 3: Camping Permit Days By Park Classification (continued)

	2003	2004	2005	2006*	2007*	2008	% change 2008 from 2007	Previous 5-yr average 2003-2007	% change 2008 from 5-yr average
Duck Mountain									
Regular	7,268	790	1,025	2,140	1,774	2,793	57.4%	2,599	7.4%
Reservation	5,518	9,761	9,442	8,690	10,185	10,021	-1.6%	8,719	14.9%
Seasonal	8,470	9,460	9,460	10,340	10,890	11,495	5.6%	9,724	18.2%
Self Registration	704	226	78	203	149	141	-5.9%	272	-48.3%
School/youth group	48	162	110	100	261	155	-40.6%	136	13.8%
Total Permit Days	22,008	20,399	20,115	21,473	23,259	24,605	5.8%	21,451	14.7%
Good Spirit Lake									
Regular	5,167	711	539	706	1,035	2,174	110.0%	1,632	33.2%
Reservation	2,152	5,129	5,382	6,380	6,655	6,520	-2.0%	5,140	26.9%
Monthly	60	120	210	210	510	150	-70.6%	222	-32.4%
Seasonal	1,980	2,310	3,190	2,420	2,310	2,090	-9.5%	2,442	-14.4%
Self Registration	184	11	30	0	83	75	-8.7%	62	22.5%
School/youth group	242	1,398	1,244	1,150	1,098	679	-38.2%	1,026	-33.8%
Total Permit Days	9,785	9,679	10,595	10,866	11,691	11,688	0.0%	10,523	11.1%
Greenwater Lake									
Regular	6,778	5,666	5,818	5,925	6,270	5,982	-4.6%	6,091	-1.8%
Reservation	3,293	2,609	2,805	3,150	3,208	5,163	60.9%	3,013	71.4%
School/youth group	136	123	92	62	239	192	-19.7%	130	47.2%
Total Permit Days	10,207	8,398	8,715	9,137	9,717	11,337	16.7%	9,235	22.8%
Lac La Ronge									
Regular	3,784	2,759	2,729	1,945	2,285	2,592	13.4%	2,700	-4.0%
Reservation	128	100	81	19	0	282		66	329.9%
Monthly	510	330	390	420	480	600	25.0%	426	40.8%
Seasonal	880	880	1,650	1,595	2,200	1,925		1,441	33.6%
Self Registration	590	1,282	1,266	973	1,398	1,563	11.8%	1,102	41.9%
School/youth group	847	522	418	395	777	341	-56.1%	592	-42.4%
Total Permit Days	6,739	5,873	6,534	5,347	7,140	7,303	2.3%	6,327	15.4%
Makwa Lake									
Regular	10,904	10,821	11,341	12,001	13,959	12,959	-7.2%	11,805	9.8%
Reservation						3,415	100.0%		
Monthly	300	210	240	270	150	0	-100.0%	234	-100.0%
Seasonal	3,410	4,180	4,620	4,840	3,850	3,960	2.9%	4,180	-5.3%
Self Registration	38	3	37	0	8	11	53.1%	17	-32.8%
School/youth group	54	68	285	0	92	0		100	-100.0%
Total Permit Days	14,706	15,282	16,523	17,111	18,059	20,345	12.7%	16,336	24.5%
Meadow Lake									
Regular	17,912	17,070	16,325	18,584	20,302	21,685	6.8%	18,039	20.2%
Reservation	7,977	7,429	7,060	7,392	7,657	7,546	-1.4%	7,503	0.6%
Seasonal	3,740	3,740	3,630	3,740	3,630	3,630	0.0%	3,696	-1.8%
Self Registration	3,952	2,981	3,476	4,041	5,469	5,413	-1.0%	3,984	35.9%
School/youth group	1,738	1,727	2,149	2,153	1,380	1,883	36.4%	1,829	2.9%
Total Permit Days	35,319	32,947	32,640	35,910	38,438	40,157	4.5%	35,051	14.6%

Table 3: Camping Permit Days by Park Classification (continued)

	2003	2004	2005	2006*	2007*	2008	% change 2008 from 2007	Previous 5-yr average 2003-2007	% change 2008 from 5-yr average
Moose Mountain									
Regular	687	498	259	397	397	4,128	939.8%	448	822.3%
Reservation	12,175	10,206	10,687	10,640	11,492	8,962	-22.0%	11,040	-18.8%
Monthly				30	390	360	-7.7		
Seasonal	3,355	3,300	3,795	3,520	4,070	4,180	2.7%	3,608	15.9%
Self Registration	266	86	106	142	266	739	177.9%	173	326.8%
School/youth group	1,248	870	1,520	1,001	639	554	-13.3%	1,056	-47.5%
Total Permit Days	17,731	14,960	16,367	15,730	17,254	18,923	9.7%	16,408	15.3%
Narrow Hills									
Regular	195	5	0	2,854	3712	3,644	-1.8%	1,353	169.3%
Monthly	300	30	0	570	540	630	16.7%	288	118.8%
Seasonal	2,310	2,310	2,090	2,530	2,805	2,640	-5.9%	2,409	9.6%
Self Registration	4,022	3,469	3,455	370	71	55	-22.6%	2,277	-97.6%
School/youth group	169	337	286	196	349	405	16.0%	267	51.5%
Total Permit Days	6,996	6,151	5,831	6,520	7,477	7,374	-1.4%	6,595	11.8%
Saskatchewan Landing									
Regular	9,144	7,440	5,642	8,343	12,115	12,638	4.3%	8,537	48.0%
Reservation		1,097	2,919	3,260	2,621	4,145	58.1%	1,979	109.4%
Monthly	360	810	2220	2070	1800	1,800	0.0%	1,452	24.0%
Seasonal	5,610	5,555	6,270	5,170	6,490	6,930	6.8%	5,819	19.1%
Self Registration	375	219	185	264	457	830	81.4%	300	176.5%
School/youth group	57	108	53	22	60	22	-63.3%	60	-63.3%
Total Permit Days	15,546	15,229	17,289	19,129	23,543	26,365	12.0%	18,147	45.3%
RECREATION PARKS									
Blackstrap									
Regular	2	0	7	908	1896	2,666	40.6%	563	373.9%
Monthly		240	90	330	630	330	-47.6%	258	27.9%
Seasonal	605	440	330	110	550	660	20.0%	407	62.2%
Self Registration	1,779	1,311	1,664	923	0	397	0.0%	1,135	-65.0%
School/youth group		0	0	0	72	68	-5.6%	14	372.2%
Total Permit Days	2,386	1,991	2,091	2,271	3,148	4,121	30.9%	2,377	73.4%
Buffalo Pound									
Regular	8,944	7,433	8,334	8,820	9,047	4,620	-48.9%	8,516	-45.7%
Reservation						5,655	100.0%		
Seasonal	3,575	2,970	2,970	2,970	3,080	3,080	0.0%	3,113	-1.1%
Self Registration	260	142	148	0	0	253	0.0%	110	130.0%
School/youth group	1,417	1,412	279	779	1,828	1,510	-17.4%	1,143	32.1%
Total Permit Days	14,196	11,957	11,731	12,569	13,955	15,118	8.3%	12,882	17.4%
Candle Lake									
Regular	10,819	9,910	8,467	7,861	6,976	5,932	-15.0%	8,807	-32.6%
Reservation	1,808	1,240	2,675	3,186	2,647	6,190	133.8%	2,311	167.8%
Monthly	480	330	270	330	360	390	8.3%	354	10.2%
Seasonal	1,980	2,090	1,650	1,650	1,540	1,540	0.0%	1,782	-13.6%
Self Registration	95	17	6	52	0	50		34	
School/youth group	248	100	310	279	170	395	132.4%	221	78.4%
Total Permit Days	15,430	13,687	13,378	13,358	11,693	14,497	24.0%	13,509	7.3%

Table 3: Camping Permit Days by Park Classification (continued)

	2003	2004	2005	2006*	2007*	2008	% change 2008 from 2007	Previous 5-yr average 2003-2007	% change 2008 from 5-yr average
Crooked Lake									
Regular	1,154	187	152	83	55	1,056	1820.0%	326	223.7%
Reservation		417	881	807	1051	1,057	0.6%	631	67.5%
Monthly	90	90	0	60	120	90	-25.0	72	25.0
Seasonal	1,320	1,210	1,320	1,540	2,530	2,420	-4.3%	1,584	52.8%
Self Registration	722	698	607	1,002	788	175	-77.7%	763	-77.0%
Total Permit Days	3,286	2,602	2,960	3,492	4,544	4,798	5.6%	3,377	42.1%
Danielson									
Regular	1,328	1,240	1,627	2,008	1,960	1,047	-46.6%	1,633	-35.9%
Reservation						2,121	100.0%		
Monthly	60	0	0	630	810	1,500	85.2%	300	400.0%
Seasonal	2,640	2,695	3,630	4,070	5,170	3,300	-36.2%	3,641	-9.4%
Self Registration	886	608	256	155	203	148	-27.0%	421	-64.9%
School/youth group	50	42	128	0	15	43	186.7%	47	-8.5%
Total Permit Days	4,964	4,585	5,641	6,863	8,158	8,159	0.0%	6,042	35.0%
Echo Valley									
Regular	6,820	6,159	0	7,222	878	2,496	184.3%	4,216	-40.8%
Reservation	0	0	6,499	0	6,998	6,546	-6.5%	2,699	142.5%
Monthly	270	240	510	600	1,350	1,680	24.4%	594	182.8%
Seasonal	11,275	10,890	11,880	12,375	12,760	12,540	-1.7%	11,836	5.9%
Self Registration	447	366	273	285	243	119	-51.0%	323	-63.2%
School/youth group	1,721	1,251	2,982	2,238	1,475	2,029	37.6%	1,933	4.9%
Total Permit Days	20,533	18,906	22,144	22,720	23,704	25,410	7.2%	21,601	17.6%
Pike Lake									
Regular	13,100	11,560	11,904	8,766	5,367	5,812	8.3%	10,139	-42.7%
Reservation				4,533	7,369	7,999	8.5%	2,380	236.0%
Seasonal	2,750	2,640	2,750	3,410	2,750	2,970	8.0%	2,860	3.8%
Self Registration	105	95	169	64	138	191	37.7%	114	66.7%
School/youth group	2,374	2,008	1,538	918	923	1,299	40.7%	1,552	-16.3%
Total Permit Days	18,329	16,303	16,361	17,691	16,547	18,271	10.4%	17,046	7.2%
Rowan's Ravine									
Regular	3,299	4,033	5,315	5,512	3,932	5,049	28.4%	4,418	14.3%
Reservation					2911	4,697	61.4%		
Monthly		90	360	1,110	1,200	0	-100.0%	552	-100.0%
Seasonal	11,605	11,880	12,540	12,925	13,640	15,840	16.1%	12,518	26.5%
Self Registration	2,240	74	21	43	95	56	-41.2%	494	-88.8%
School/youth group	142	188	170	193	62	78	25.8%	151	-48.3%
Total Permit Days	17,286	16,265	18,406	19,783	21,840	25,720	17.8%	18,716	37.4%
The Battlefords									
Regular	5,294	3,865	5,070	7,757	10,316	11,569	12.1%	6,460	79.1%
Reservation				3,872	3,872	3,872	100.0%		
Monthly	150	60	150	150	120	0	-100.0%	126	-100.0%
Seasonal	2,695	2,035	2,750	3,905	5,280	6,050	14.6%	3,333	81.5%
School/youth group	134	81	94	193	216	419	94.0%	144	191.8%
Total Permit Days	8,273	6,041	8,064	15,877	19,804	21,910	10.6%	11,612	88.7%

Table 3: Camping Permit Days by Park Classification (continued)

	2003	2004	2005	2006*	2007*	2008	% change 2008 from 2007	Previous 5-yr average 2003-2007	% change 2008 from 5-yr average
HISTORIC PARKS									
Fort Carlton									
Regular	73	171	60	52	53	45	-15.1%	82	-45.0%
Self Registration									
School/youth group	648	179	532	242	242	242	0.0%	369	-34.3%
Total Permit Days	721	350	592	294	295	287	-2.7%	450	-36.3%
GRAND TOTAL PROVINCIAL PARK CAMPGROUND PERMIT DAYS									
Regular	138,031	111,740	107,090	122,044	124,851	130,407	4.5%	120,751	8.0
Reservation	42,226	46,265	59,876	65,981	81,585	101,929	24.9%	59,787	70.5%
Monthly	3,150	4,020	7,290	10,170	12,480	11,400	-8.7%	7,422	53.6%
Seasonal	71,995	69,135	74,855	77,440	83,545	85,250	2.0%	75,394	13.1%
Self Registration	16,322	12,918	12,552	9,546	9,768	11,324	15.9	12,221	-7.3%
School/youth group	14,724	14,235	14,571	13,835	13,687	13,736	0.4%	14,210	-3.3%
Grand Total Permit Days	286,448	261,313	276,234	299,016	325,916	354,046	8.6	289,785	22.2%
* Data differs from those previously reported due to clean up of source data									

Table 4 provides a breakdown of camping permit days by recreation site.

Table 4: Provincial Recreation Site Campgrounds - Permit Days

	2003	2004	2005	2006*	2007*	2008	Per cent change 2008 to 2007	Previous 5-yr average 2003-2007	Per cent change 2008 to 5-yr average
Amisk Lake - Sawmill Bay									
Self Registration	117	96	85	17	17	17	0.0%	66	-74.4%
Permit Days	117	96	85	17	17	17	0.0%	66	-74.4%
Amisk Lake - Sand Beach									
Seasonal	110	110	110	38	38	38	0.0%	81	-53.2%
Self Registration	150	102	85				NA	67	-100.0%
Permit Days	260	212	195	38	38	38	0.0%	149	-74.4%
Anglin Lake									
Seasonal	2,750	2,860	2,640	2,420	2,420	2,420	0.0%	2,618	-7.6%
Self Registration	2,106	1,979	2,238	2,407	0	0	NA	1,746	-100.0%
School/youth group	57			0	264	515	95.1%	64	702.2%
Permit Days	4,913	4,839	4,878	4,827	2,684	2,935	9.4%	4,428	-33.7%
Beatty Lake									
Self Registration	141	131	106	86	78	99	26.1%	108	-8.9%
Permit Days	141	131	106	86	78	99	26.1%	108	-8.9%
Beaver/Cowan Dam									
Self Registration	76	74	100	86	36	39	8.7%	74	-47.7%
Permit Days	76	74	100	86	36	39	8.7%	74	-47.7%
Bronson Forest									
Regular									
Seasonal	1,485	2,090	1,870	2,200	2,420	2,420	0.0%	2,013	20.2%
Self Registration	2,024	1,295	1,286	1,330	1,762	2,373	34.7%	1,539	54.2%
Permit Days	3,509	3,385	3,156	3,530	4,182	4,793	14.6%	3,552	34.9%
Chitek Lake									
Regular	3							1	
Seasonal	990	990	990	990	990	990	0.0%	990	
Self Registration	2,504	2,331	2,476	2,570	2,848	3,311	16.3%	2,546	30.1%
Permit Days	3,497	3,321	3,466	3,560	3,838	4,301	12.1%	3,537	21.6%
Coldwell Park									
Self Registration	108	101	108	145	193	264	36.7%	131	101.9%
School/youth group	46		128	0	0	0	NA	0	NA
Permit Days	154	101	236	145	193	264	36.7%	166	59.5%
Emma Lake									
Regular	6,435	5,310	5,475	5,124	5,813	5,542	-4.7%	5,631	-1.6%
Reservation	3,138	2,810	2,812	2,886	2,619	4,507	72.1%	2,853	58.0%
Seasonal	220	440	990	770	1,320	1,320	0.0%	748	76.5%
Self Registration				0	0	0			
School/youth group	763	633	32	614	102	44	-56.9%	429	-89.7%
Permit Days	10,556	9,193	9,309	9,394	9,854	11,413	15.8%	9,661	18.1%
Granite Lake									
Self Registration	80	49	38	27	27	27	0.0%	44	-39.0%
Permit Days	80	49	38	27	27	27	0.0%	44	-39.0%

Table 4: Provincial Recreation Site Campgrounds - Permit Days (continued)

	2003	2004	2005	2006*	2007*	2008	Per cent change 2008 to 2007	Previous 5-yr average 2003-2007	Per cent change 2008 to 5-yr average
Hanson Lake									
Self Registration	411	263	191	0	0	0		173	-100.0%
Permit Days	411	263	191	0	0	0		173	-100.0%
Jan Lake									
Regular									
Permit Days	0	0	0	0	0	0			
Leaf Rapids									
Self Registration	112	89	93	28	28	28	0.0%	70	-60.0%
Permit Days	112	89	93	28	28	28	0.0%	70	-60.0%
Pagan Lake									
Self Registration	131	70	56	79	52	138	165.3%	78	78.5%
Permit Days	131	70	56	79	52	138	165.3%	78	78.5%
Ruby Lake									
Regular									
Permit Days	0	0	0	0	0	0			
Tyrell Lake									
Seasonal									
Self registration	51	28	15	29	29	29	0.0%	30	-4.5%
Permit Days	51	28	15	29	29	29	0.0%	30	-4.5%
Woody Lake									
Regular	710	723	546	696	487	571	17.2%	632	-9.7%
Monthly*	120	120	210	240	450	0	-100.0%	228	-100.0%
Seasonal	385	290	440	880	880	880	0.0%	575	53.0%
Self Registration				0	0	0			
Permit Days	1,215	1,133	1,196	1,816	1,817	1,451	-20.1%	1,435	1.1%
Other Locations									
Self registration	136	51		0	0	0			
Permit Days	136	51	0	0	0	0			
TOTAL RECREATION SITES									
Regular	7,145	6,033	6,021	5,820	6,300	6,113	-3.0%	6,264	-2.4%
Reservation	3,138	2,810	2,812	2,886	2,619	4,507	72.1%	2,853	58.0%
Monthly	120	120	210	240	450	0	-100.0%	228	-100.0%
Seasonal	5,940	6,780	7,040	7,298	8,068	8,068	0.0%	7,025	14.8%
Self Registration	8,147	6,658	6,877	6,804	5,071	6,327	24.7%	6,711	-5.7%
School/youth group	866	633	160	614	366	559	52.7%	528	5.9%
Total Permit Days	25,356	23,034	23,120	23,662	22,874	25,574	11.8%	23,609	8.3%
* Data differs from those previously reported due to clean up of source data									

Table 5 provides a combined total for park and recreation sites camping permit days.

Table 5: Total Reported Campground Permit Days for Provincial Parks and Recreation Sites

	2003	2004	2005	2006*	2007*	2008	Per cent change 2008 from 2007	Previous five-year average 2003-2007	Per cent change 2008 from five-year average
Regular	145,179	117,769	119,610	127,864	131,151	136,520	4.1%	128,315	6.4%
Reservation	45,364	49,379	53,498	84,755	97,181	106,436	9.5%	66,035	61.2%
Monthly	3,270	4,140	7,500	10,410	12,930	11,400	-11.8%	7,650	49.0%
Seasonal	77,935	75,915	81,895	84,738	91,613	93,318	1.9%	82,419	13.2%
Self Registration	26,709	19,576	19,429	16,307	14,745	17,651	19.7%	19,353	-8.8%
School/youth group	15,663	15,039	14,791	14,449	14,053	14,295	1.7%	14,799	-3.4%
Total Permit Days	314,120	281,818	296,723	338,523	361,673	379,620	5.0%	318,571	19.2%

* Data differs from those previously reported due to clean up of source data

Table 5a: May Long Weekend Camping Permit Days

Location	May Long Weekend 2007			May Long Weekend 2008			Per cent Change from 2007		
	# Camping Permits	Permit Days	Per cent Occup.	# Camping Permits	Permit Days	Per cent Occup.	# Camping Permits	Permit Days	Per cent Occup.
Buffalo Pound	129	331	46%	144	375	38%	11.6%	13.3%	-7.2%
Candle Lake	34	79	8%	52	130	40%	52.9%	64.6%	32.1%
Crooked Lake	42	114	37%	52	135	39%	23.50%	18.42%	1.2%
Cypress Hills	281	746	53%	271	716	38%	-3.6%	-4.0%	-15.6%
Danielson	71	194	70%	90	238	38%	26.8%	22.7%	-31.7%
Douglas	110	291	50%	134	354	38%	21.8%	21.6%	-12.1%
Duck Mountain	37	83	6%	49	117	42%	32.43%	40.96%	35.6%
Echo Valley	240	662	50%	243	679	36%	1.3%	2.6%	-14.4%
Emma Lake	35	95	15%	94	230	41%	168.6%	142.1%	26.0%
Good Spirit Lake	60	164	24%	97	256	38%	61.7%	56.1%	13.9%
Greenwater Lake	12	24	3%	43	108	40%	258.3%	350.0%	37.1%
Makwa Lake	82	235	26%	116	385	30%	41.5%	63.8%	3.7%
Moose Mountain	116	322	29%	152	428	36%	31.0%	32.9%	6.7%
Narrow Hills	38	109	32%	51	143	36%	34.2%	31.2%	3.5%
Pike Lake	143	381	46%	251	622	40%	75.5%	63.3%	-5.1%
Rowan's Ravine	210	593	66%	255	736	35%	21.4%	24.1%	-30.9%
Saskatchewan Landing	221	592	55%	212	586	36%	-4.1%	-1.0%	-18.3%
The Battlefords	120	311	24%	154	414	37%	28.3%	33.1%	12.8%
TOTAL	1,981	5,326	30%	2,460	6,652	37.9%	24.2%	24.9%	7.6%

Table 5b: May Long Weekend Compliance Comparison 2007 to 2008

Year	Charges				Narcotics Control Act	Warnings		Evictions		Suspensions		Complaints	Vandalism	
	Parks	Alcohol	CCC	HTA		Verbal	Written	Sites	Indiv.	24hr	30 Day		Occurrences	Damage in \$
2007	1	24	2	2	0	155	32	16	97	0	0	8	8	200
2008	9	49	2	5	4	496	20	28	138	2	0	47	0	90
Difference	8	25	0	3	4	341	-12	12	41	2	0	39	-8	-110
% Change	800%	104%	0%	150%	400%	220%	-38%	75%	42%	200%	NA	488%	-800%	-55%

CCC = Criminal Code of Canada
HTA = Highway Traffic Act

Table 6 provides a breakdown of the number of seasonal camping permits issued and a comparison with 2006 and 2007 data.

Table 6: Seasonal Camping Program

	2006		2007		2008	
	Sites Available	Seasonal Camping Permits Issued	Sites Available	Seasonal Camping Permits Issued	Sites Available	Seasonal Camping Permits Issued
NATURAL ENVIRONMENT PARKS						
Cypress Hills	5	3	0	0	0	0
Douglas	0	0	0	0	0	0
Duck Mountain	74	94	74	99	104	104
Good Spirit Lake	16	22	22	21	31	19
Greenwater Lake	0	0	0	0	0	0
Lac La Ronge	94	16	94	21	94	18
Makwa Lake	42	44	21	57	37	36
Meadow Lake	36	9	25	33	25	33
Moose Mountain	43	32	53	37	38	38
Narrow Hills	16	23	24	26	24	24
Saskatchewan Landing	77	47	59	59	64	63
Sub Total	403	292	372	353	417	335
RECREATION PARKS						
Blackstrap	6	1	0	5	6	6
Buffalo Pound	26	27	26	28	26	28
Candle Lake	18	15	15	14	15	14
Crooked Lake	7	14	11	23	21	22
Danielson	92	37	47	47	30	30
Echo Valley	100	113	117	116	114	114
Pike Lake	28	31	28	25	28	27
Rowan's Ravine	140	118	125	124	147	144
The Battlefords	55	36	58	52	55	55
Sub Total	472	366	427	434	442	440
RECREATION SITES						
Amisk Lake-Sand Beach						
Anglin Lake	20	24	20	22	20	22
Bronson Forest	22	20	22	0	22	0
Chitek Lake	9	9	9	9	9	9
Emma Lake	12	7	12	12	12	12
Tyrrell Lake						
Woody River		8		8		8
Sub Total	63	62	63	51	63	51
Grand Total	938	720	862	838	922	826

CAMPFIRE PERMITS AND CAMPFIRE PERMIT DAYS

In 2008, the government announced a cancellation of the sale of campfire permits. Campers were provided with firewood as part of their nightly camping experience, at no extra charge. The figures below, which summarize campfire permit sales between 2004 and 2007, are provided in order to maintain consistency with reporting formats from previous years.

In 2004, 54,552 campfire permits were issued.

- 34,329 daily permits
- 14,290 three-day permits
- 5,394 weekly permits
- 589 annual

In 2005, 57,931 campfire permits were issued, an increase of 6.1 per cent.

- 35,933 daily permits
- 15,805 three-day permits
- 5,469 weekly permits
- 724 annual permits

In 2006, 57,232 campfire permits were issued, decrease of 1.2 per cent from 2005.

- 35,342 daily permits
- 15,833 three-day permits
- 5,219 weekly permits
- 838 annual permits

In 2007, 61,448 campfire permits were issued, an increase of 7.37 per cent from 2006.

- 37,203 daily permits
- 17,601 three-day permits
- 5,610 weekly permits
- 1,034 annual permits

Between 2004 and 2007, the nightly campfire permit sales increased by 35 per cent overall. The increase in sales of campfire permits over the four years has similar characteristics to the increase in sales of camping permits – steady annual increase, significant overall increase, and particularly an increase in sales of annual permits as opposed to lesser increases for daily, three day and weekly.

Table 7 provides a park-by-park breakdown of the campfire permits issued and campfire permit days.

Table 7: Campfire Permits Issued and Per cent Change from 2006

	Daily Permit	3-Day Permit	Weekly Permit	Annual Permit	2007 Campfire Permit Days	2006 Campfire Permit Days	Per cent Change 2007-2006
NATURAL ENVIRONMENT PARKS							
Cypress Hills	5,194	2,998	634	14	20,166	12143	66.07%
Douglas	1,422	740	199	30	8,335	8208	1.55%
Duck Mountain	1,854	1,190	403	98	19,025	17294	10.01%
Good Spirit Lake	1,652	881	234	23	8,463	7804	8.44%
Greenwater Lake	1,547	917	280	5	6,808	6573	3.58%
Lac La Ronge	636	247	67	8	2,726	1633	66.93%
Makwa Lake *	850	507	388	90	14,987	14800	1.26%
Meadow Lake	2,725	1,818	1,193	65	23,680	23779	-0.42%
Moose Mountain	2,554	1,145	200	44	12,229	11158	9.60%
Narrow Hills	513	291	136	14	3,878	3793	2.24%
Saskatchewan Landing	1,887	792	270	121	19,463	14384	35.31%
Sub Total	20,834	11,526	4,004	512	139,760	121569	14.96%
RECREATION PARKS							
Blackstrap	690	176	26	5	1,950	1522	28.12%
Buffalo Pound	2,082	624	155	39	9,329	8577	8.77%
Candle Lake	1,313	622	283	17	7,030	7880	-10.79%
Crooked Lake	406	125	18	22	3,327	2396	38.86%
Danielson	625	166	32	41	5,857	4975	17.73%
Echo Valley	2,312	776	86	115	17,892	15484	15.55%
Pike Lake	3,044	983	256	39	12,075	11526	4.76%
Rowan's Ravine	1,762	677	115	119	17,688	14517	21.84%
The Battlefords	1,776	860	215	48	11,141	8927	24.80%
Sub Total	14,010	5,009	1,186	445	86,289	75804	13.83%
RECREATION SITES							
Anglin Lake	285	143	42	17	2,878	2887	-0.31%
Beatty Lake	21	3	1	0	37	30	23.33%
Beaver/Cowan Dam	71	17	1	0	129	102	26.47%
Bronson Forest	209	120	54	15	2,597	1067	143.39%
Chitek Lake	353	172	79	5	1,972	1777	10.97%
Creighton Area	77	29	3	1	295	234	26.07%
Emma Lake	1,077	526	234	33	7,923	7104	11.53%
Pagan Lake	24	3	0	0	33	36	-8.33%
Woody River	180	50	6	6	1,032	893	15.57%
Sub Total	2,297	1,063	420	77	16,896	14130	19.58%
HISTORIC PARKS							
Fort Carlton	62	3	0	0	71	51	39.22%
GRAND TOTAL	37,203	17,601	5,610	1,034	243,016	211554	14.87%

PROGRAMS



PROVINCIAL PARKS VISITOR PROGRAM STATISTICS

This section presents information on natural and human history school/youth group program use, historic parks visitor use, and natural environment and recreation parks general public (casual) visitor programs which include a combination of general public interpretive educational programs, some recreational programs and special events.

Attendance at provincial historic parks and their programs is measured through the use of hand counters. Statistical reporting procedures for participation levels at the natural environment and recreation parks and sites are based on staff recording the number of programs provided and the number of participants attending the programs. The reporting procedures are being updated, which may have impacted reports of use.

Provincial Parks Programs

Historic Parks

Four historic parks offer staff-conducted programs. Group programs are offered to school/youth groups and to other groups on a pre-booked basis. Each booked group receives one program. As historic parks interpretive programs are carried out continuously during the hours of operation, those people who arrive separate from booked groups are referred to as casuals. Each member of the group or each person who comes as a “casual visitor” is included in the program statistics and the visit statistics for historic parks. Visits and program use at the four historic parks with interpretive staff are given in **Table 8**.

Figure 13: Total Visits Including Visitor Types for Historic Parks with Staff-Conducted Programs 2003 to 2008

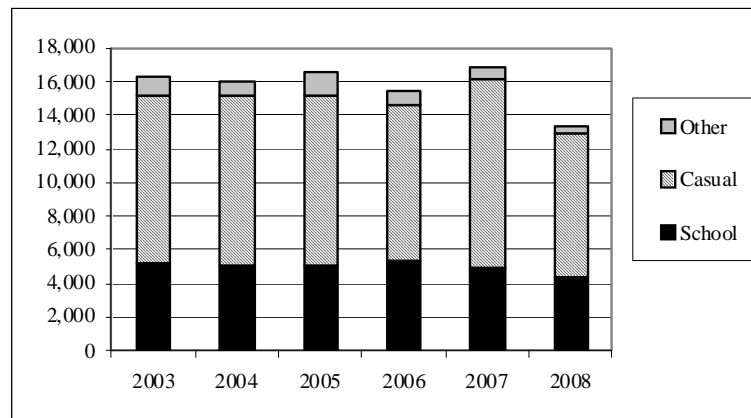


Table 8: Historic Parks Interpretive Programs and Participants

Historic Parks	Visitor Type	Number of Programs Delivered						% Change 2007-08
		2003	2004	2005	2006	2007	2008	Programs
Cannington Manor	School	18	18	32	21	24	21	-12.5%
	Casual							
	Other	5	4	11	3	8	1	-87.5%
	Total	23	22	43	24	32	22	-31.3%
Fort Carlton	School	111	107	107	113	112	103	-8.0%
	Casual							
	Other	26	22	27	30	24	14	-41.7%
	Total	137	129	134	143	136	117	-14.0%
Last Mountain House *	School		2		0	0	0	
	Casual							
	Other	1	1		0	1	0	
	Total	1	3	0	0	1	0	-100.0%
Wood Mountain Post *	School	15	12	12	15	12	9	-25.0%
	Casual							
	Other	3	6	3	4	3	0	-100.0%
	Total	18	18	15	19	15	9	-40.0%
Historic Parks	School	144	139	151	149	148	133	-10.1%
	Casual							
	Other	35	33	41	37	36	15	-58.3%
	Total	179	172	192	186	184	148	-19.6%

Historic Parks	Visitor Type	Number of Participants						Per cent Change 2007-08
		2003	2004	2005	2006	2007	2008	Participants
Cannington Manor	School	508	648	738	524	676	532	-21.3%
	Casual	3,451	3,380	3,291	2,535	3,156	2,681	-15.1%
	Other	187	130	465	65	162	20	-87.7%
	Total	4,146	4,158	4,494	3,124	3,994	3,233	-19.1%
Fort Carlton	School	4,478	4,135	4,151	4,582	4,119	3,705	-10.1%
	Casual	4,278	4,052	3,952	3,914	5,597	3,652	-34.8%
	Other	775	616	868	612	398	195	-51.0%
	Total	9,531	8,803	8,971	9,108	10,114	7,552	-25.3%
Last Mountain House *	School	0	21	0	0	0		
	Casual	1,131	911	1,035	919	918	953	3.8%
	Other	40	40	0	0	34	70	105.9%
	Total	1,171	972	1,035	919	952	1,023	7.5%
Wood Mountain Post **	School	277	201	206	202	195	137	-29.7%
	Casual	1,034	1,775	1,798	1,975	1,499	1,293	-13.7%
	Other	145	124	65	115	76	70	-7.9%
	Total	1,456	2,100	2,069	2,292	1,770	1,500	-15.3%
Historic Parks	School	5,263	5,005	5,095	5,308	4,990	4,374	-12.3%
	Casual	9,894	10,118	10,076	9,343	11,170	8,579	-23.2%
	Other	1,147	910	1,398	792	670	355	-47.0%
	Total	16,304	16,033	16,569	15,443	16,830	13,308	-20.9%

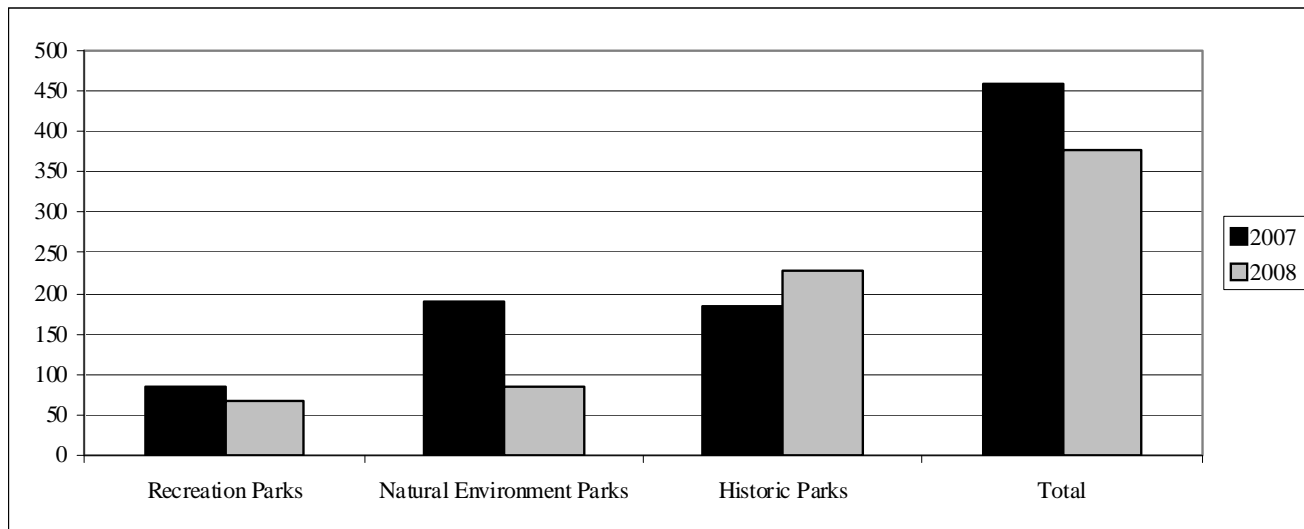
Last Mountain House and Wood Mountain Post are open from the end of June to the end of the Labour Day weekend

School Group Use

Reporting of school group programs is relatively consistent throughout the provincial parks system; school/youth group use at natural environment, recreation and historic parks is summarized in **Table 9**. Historic parks provide only one program per group. Natural environment and recreation parks may provide more than one program per group, therefore, the number of programs offered and participants at these parks will be greater than the number of groups and students/youths.

The number of school groups utilizing park programs decreased by 17.6 per cent or by 81 groups from 2007.

Figure 14: Comparison between 2007 and 2008 of School Group Use by Park Classification and Total School/Youth Groups



The total number of students who utilized conducted programs decreased by 13.1 per cent in 2007.

Figure 15: Comparison between 2007 and 2008 of the Number of Students who came to Staff-Conducted School Programs by Park Classification and Total Number of Students

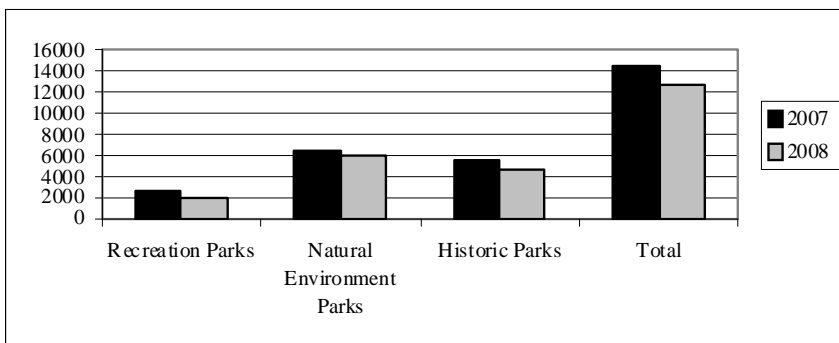


Table 9: School/Other Youth Group Programs by Park Classification

	Visitor Type	2007				2008				Per cent Change From 2007
		No. of Groups	No. of Students	No. of Programs	No. of Participants	No. of Groups	No. of Students	No. of Programs	No. of Participants	
NATURAL ENVIRONMENT										
Cypress Hills	School	69	2,204	223	4,853	0	3,339	178	3,339	51.50%
	Other	3	148	9	328	0	0	0	0	-100.00%
	Total	72	2,352	232	5,181	0	3,339	178	3,339	41.96%
Douglas	School	5	111	7	151	5	112	6	103	0.90%
	Other									
	Total	5	111	7	151	5	112	6	128	0.90%
Duck Mountain	School	17	415	62	773	0	0	36	460	-100.00%
	Other									
	Total	17	415	62	773	0	0	36	460	-100.00%
Good Spirit Lake	School	17	394	35	898	11	276	20	458	-29.95%
	Other									
	Total	17	394	35	898	11	276	20	458	-29.95%
Greenwater Lake	School	14	560	51	1,161	13	371	39	710	-33.75%
	Other	1	24	2	48	0	0	0	0	-100.00%
	Total	15	584	53	1,209	13	371	39	710	-36.47%
Lac La Ronge*	School									
	Other									
	Total	0	0	0	0	0	0	0	0	
Meadow Lake	School	20	426	70	978	16	454	66	1,522	6.57%
	Other									
	Total	20	426	70	978	16	454	66	1,522	6.57%
Moose Mountain	School	38	1,918	115	1,918	33	740	101	1,581	-61.42%
	Other									
	Total	38	1,918	115	1,918	33	740	101	1,581	-61.42%

Table 9: School/Other Youth Group Programs by Park Classification (continued)

	Visitor Type	2007				2008				Per cent Change From 2007
		No. of Groups	No. of Students	No. of Programs	No. of Participants	No. of Groups	No. of Students	No. of Programs	No. of Participants	
Saskatchewan	School	6	200	22	446	6	634	0	634	217.00%
Landing *	Other	1	10	3	30	1	16	1	16	60.00%
	Total	7	210	25	476	7	650	1	650	209.52%
	School	186	6,228	585	11,178	84	5,926	446	8,807	-4.85%
	Other	5	121	14	406	1	16	1	16	-86.78%
Subtotal	Total	191	6,349	599	11,584	85	5,942	447	8,823	-6.41%
RECREATION PARKS										
Buffalo Pound	School	23	806	44	889	24	739	56	1,108	-8.31%
	Other	3	44	3	44	1	7	0	0	-84.09%
	Total	26	850	47	933	25	746	56	1,108	-12.24%
Echo Valley	School	21	581	61	1,067	18	462	53	1,024	-20.48%
	Other	2	17	3	32	0	0	1	214	-100.00%
	Total	23	598	64	1,099	18	462	54	1,238	-22.74%
Pike Lake	School	36	1,174	130	2,045	23	869	71	869	-25.98%
	Other									
	Total	36	1,174	130	2,045	23	869	71	869	-25.98%
Recreation Parks	School	80	2,561	235	4,001	65	2,070	180	3,001	-19.17%
	Other	5	61	6	76	1	7	1	214	-88.52%
Subtotal	Total	85	2,622	241	4,077	66	2,077	181	3,215	-20.79%
HISTORIC PARKS										
Cannington	School	24	676			21	532			-21.30%
Manor	Other	8	162			1	20			-87.65%
	Total	32	838	0	0	22	552	0	0	-34.13%
Fort Carlton	School	112	4,119	0	0	103	3,705			-10.05%
	Other	24	398	0	0	14	195			-51.01%
	Total	136	4,517	0	0	117	3,900	0	0	-13.66%

Table 9: School/Other Youth Group Programs by Park Classification (continued)

	Visitor Type	2007				2008				Per cent Change From 2007
		No. of Groups	No. of Students	No. of Programs	No. of Participants	No. of Groups	No. of Students	No. of Programs	No. of Participants	
Last Mountain House^	School	0	0	0	0	0	0	0	0	
	Other	0		0	0	9	70	0	0	
	Total	0	0	0	0	9	70	0	0	
Wood Mountain Post	School	12	195	0	0	9	137			-29.74%
	Other	3	76	0	0	70				-100.00%
	Total	15	317	0	0	79	137	0	0	-56.78%
Historic Parks	School	148	4,990	0	0	133	4,374	0	0	-12.34%
	Other	35	636	0	0	94	285	0	0	-55.19%
Sub Total	Total	183	5,626	0	0	227	4,659	0	0	-17.19%
COMBINED SCHOOL/YOUTH										
					+					
	School	414	13,779	820	15,179	282	12,370	626	11,808	-10.23%
	Other	45	818	20	482	96	308	2	230	-62.35%
Totals	Total	459	14,597	840	15,661	378	12,678	628	12,038	-13.15%

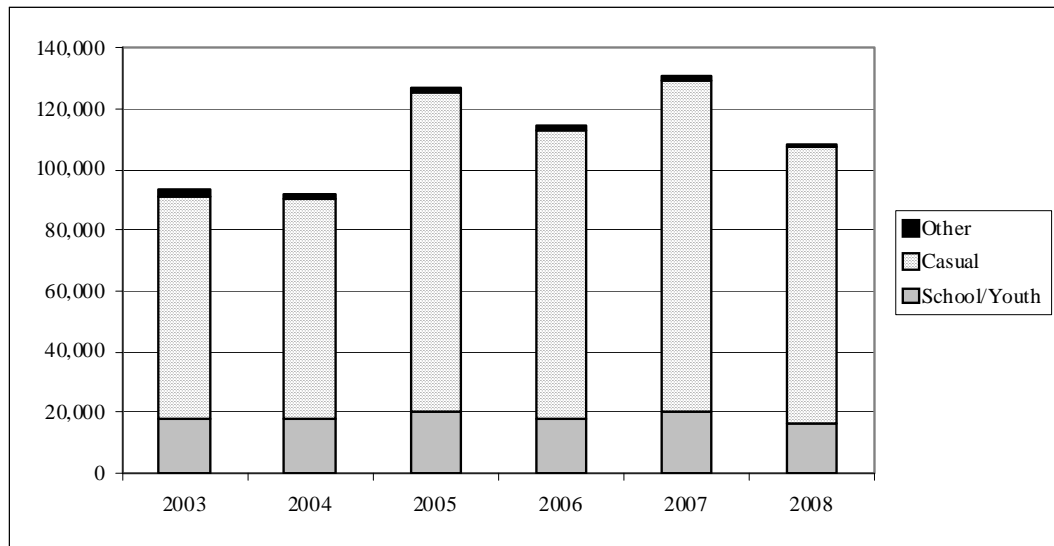
* Lac La Ronge and Saskatchewan Landing data is unavailable for 2004 and 2005

^ Last Mountain House is only open July through to the September long weekend

Total Conducted Program Participation

Provincial natural environment/recreation park programs entail scheduled activities that are available to park visitors, ranging from water safety demonstrations and guided nature hikes to evening campfire presentations. Since participation in these programs is recorded at each event individually, participants may be recounted if they participate in more than one program. **Table 10** gives the program use, including school/youth and the general public and other groups who participated in programs for natural environment parks and recreation parks, as well as historic parks. Over 108,000 participants took part in conducted learning programs.

Figure 16: Conducted Program Use by Visitor Type from 2003 to 2008



Other Interpretive Services

The statistics provided do not include the significant numbers of persons using self-use facilities within the provincial parks. This includes self-use interpretive trails, auto tours and interpretive displays. Parks including Cypress Hills, Saskatchewan Landing, Greenwater Lake, Meadow Lake, Duck Mountain, Moose Mountain and Pike Lake also offer self-use education kits.

Table 10: Number of Programs by Visitor Type by Classification

	Visitor Type	Number of Programs Delivered					
		2003	2004	2005	2006	2007	2008
NATURAL ENVIRONMENT PARKS							
Cypress Hills	School/Youth	249	260	198	131	231	178
	Casual	97	206	216	189	174	104
	Other	12	6	9	2	9	0
	Total	358	472	423	322	414	282
Douglas	School/Youth	7	2	7	4	7	6
	Casual	48	49	48	60	58	48
	Other	0	0	0	0	0	0
	Total	55	51	55	64	65	54
Duck Mountain	School/Youth	7	27	41	38	62	36
	Casual	77	149	207	91	74	45
	Other	13	4	3	0	0	0
	Total	97	180	251	129	136	81
Good Spirit Lake	School/Youth	22	74	26	41	35	20
	Casual	73	46	106	70	94	95
	Other	1		2	0	0	0
	Total	96	120	134	111	129	115
Greenwater Lake	School/Youth	23	37	31	31	51	39
	Casual	67	72	86	60	53	73
	Other	0	0	0	2	2	0
	Total	90	109	117	93	106	112
Lac La Ronge	School/Youth	4			0		
	Casual	17			0		
	Other	0			0		
	Total	21	0	0	0	0	0
Makwa Lake	School/Youth						
	Casual						
	Other						
	Total	0	0	0	0	0	0
Meadow Lake	School/Youth	20	30	65	50	70	66
	Casual	78	0	142	102	246	401
	Other	0	0	43	1	0	0
	Total	98	30	250	153	316	467
Moose Mountain	School/Youth	100	119	119	130	115	101
	Casual	110	109	125	139	134	314
	Other	11	1	1	1	0	0
	Total	221	229	245	270	249	415
Saskatchewan Landing *	School/Youth	17		35	22	28	18
	Casual	51		86	62	90	120
	Other	3		50	23		1
	Total	71	0	171	107	118	139
Sub Total Natural Environment	School/Youth	449	549	522	447	599	464
	Casual	618	631	1,016	773	923	1,200
	Other	40	11	108	29	11	1
	Total	1,107	1,191	1,646	1,249	1,533	1,665

Table 10: Number of Programs by Visitor Type by Classification (continued)

	Visitor Type	Number of Programs Delivered					
		2003	2004	2005	2006	2007	2008
RECREATION PARKS							
The Battlefords	School/Youth	0	0	0	0	0	0
	Casual	0	0	0	0	0	0
	Other						
	Total	0	0	0	0	0	0
Buffalo Pound	School/Youth	32	39	38	54	44	56
	Casual	166	109	99	102	89	121
	Other	4	6	0	1	3	0
	Total	202	154	137	157	136	177
Echo Valley	School/Youth	51	41	53	87	61	53
	Casual	96	85	125	83	49	65
	Other	2	0	3	8	3	1
	Total	149	126	181	178	113	119
Pike Lake	School/Youth	47	75	102	69	152	71
	Casual	75	81	140	135	157	78
	Other	1		0	3		0
	Total	123	156	242	207	309	149
Rowan's Ravine	School/Youth	0	0			0	
	Casual	0	0			22	
	Other						
	Total	0	0	0	0	22	0
Sub Total Recreation Parks	School/Youth	130	155	193	210	257	180
	Casual	337	275	364	320	317	264
	Other	7	6	3	12	6	1
	Total	474	436	560	542	580	445
COMBINED TOTAL NATURAL ENVIRONMENT AND RECREATION PARK							
	School/Youth	579	704	715	657	856	644
	Casual	955	906	1,380	1,093	1,240	1,464
	Other	47	17	111	41	17	2
	Total	1,581	1,627	2,206	1,791	2,113	2,110
HISTORIC PARK TOTALS							
	School/Youth	144	139	151	149	148	133
	Casual						
	Other	35	33	41	37	36	15
	Total	179	172	186	186	184	148
COMBINED TOTALS NATURAL ENVIRONMENT, RECREATION AND HISTORIC PARKS							
	School/Youth	723	843	864	806	1,004	777
	Casual	955	906	1,380	1,093	1,240	1,464
	Other	82	50	148	78	53	17
	Total	1,760	1,799	2,392	1,977	2,297	2,258

Table 10: Number of Programs by Visitor Type by Classification (continued)

	Visitor Type	Number of Participants					
		2003	2004	2005	2006	2007	2008
NATURAL ENVIRONMENT PARKS							
Cypress Hills	School/Youth	4,725	5,281	5,816	3,229	4,853	3,339
	Casual	11,453	15,470	25,010	22,939	27,015	7,970
	Other	486	116	281	42	328	0
	Total	16,664	20,867	31,107	26,210	32,196	11,309
Douglas	School/Youth	141	23	112	66	151	128
	Casual	1,241	1,196	1,808	2,558	2,483	1,485
	Other	0	0	0	0	0	0
	Total	1,382	1,219	1,920	2,624	2,634	1,613
Duck Mountain	School/Youth	161	460	898	644	773	460
	Casual	1,610	8,122	10,997	8,585	10,047	13,177
	Other	266	96	87	0	0	0
	Total	2,037	8,678	11,982	9,229	10,820	13,637
Good Spirit Lake	School/Youth	397	1,461	559	399	898	458
	Casual	7,005	2,048	8,659	7,948	3,954	7,866
	Other	0	0	22	0	0	0
	Total	7,402	3,509	9,240	8,347	4,852	8,324
Greenwater Lake	School/Youth	780	884	643	837	1,161	710
	Casual	4,802	4,203	6,002	6,725	5,459	6,877
	Other	0	0	0	44	48	0
	Total	5,582	5,087	6,645	7,606	6,668	7,587
Lac La Ronge	School/Youth	154			0		
	Casual	281			0		
	Other	0			0		
	Total	435	0	0	0	0	0
Makwa Lake	School/Youth						
	Casual						
	Other						
	Total	0	0	0	0	0	0
Meadow Lake	School/Youth	909	1,361	1,434	827	978	1,522
	Casual	4,668	5,100	6,281	2,878	14,140	15,915
	Other	0		92	16	0	0
	Total	5,577	6,461	7,807	3,721	15,118	17,437
Moose Mountain	School/Youth	1,357	1,698	1,588	2,066	1,918	1,581
	Casual	7,708	8,418	10,435	12,638	10,427	9,005
	Other	138	16	43	22	0	0
	Total	9,203	10,132	12,066	14,726	12,345	10,586
Saskatchewan Landing *	School/Youth	350		1,056	683	535	634
	Casual	3,151		7,011	4,034	2,043	5,008
	Other	31		50	706		16
	Total	3,532	0	8,117	5,423	2,578	5,658
Sub Total Natural Environment	School/Youth	8,974	11,168	12,106	8,751	11,267	8,832
	Casual	41,919	44,557	76,203	68,305	75,568	67,303
	Other	921	228	575	830	376	16
	Total	51,814	55,953	88,884	77,886	87,211	76,151

* Programs were offered at Saskatchewan Landing in 2004 but data is unavailable on use.

Table 10: Number of Programs by Visitor Type by Classification (continued)

	Visitor Type	Number of Participants					
		2003	2004	2005	2006	2007	2008
RECREATION PARKS							
The Battlefords	School/Youth						
	Casual						
	Other						
	Total	0	0	0	0	0	0
Buffalo Pound	School/Youth	1,972	854	582	1,105	889	1,108
	Casual	15,188	9,822	6,519	6,250	5,366	6,757
	Other	97	207	0	30	44	0
	Total	17,257	10,883	7,101	7,385	6,299	7,865
Echo Valley	School/Youth	745	440	1,011	1,626	1,067	1,024
	Casual	3,512	3,117	5,113	3,437	6,923	2,685
	Other	43	0	26	110	32	214
	Total	4,300	3,557	6,150	5,173	8,022	3,923
Pike Lake	School/Youth	740	920	1,476	895	2,045	869
	Casual	3,002	4,377	6,996	7,892	9,584	5,946
	Other	13	0	0	94	0	0
	Total	3,755	5,297	8,472	8,881	11,629	6,815
Rowan's Ravine	School/Youth						
	Casual					785	
	Other						
	Total	0	0	0	0	785	0
Sub Total Recreation Parks	School/Youth	3,457	2,214	3,069	3,626	4,001	3,001
	Casual	21,702	17,316	18,628	17,579	22,658	15,388
	Other	153	207	26	234	76	214
	Total	25,312	19,737	21,723	21,439	26,735	18,603
COMBINED TOTAL NATURAL ENVIRONMENT AND RECREATION PARK							
	School/Youth	12,431	13,382	15,175	12,377	15,268	11,833
	Casual	63,621	61,873	94,831	85,884	98,226	82,691
	Other	1,074	435	601	1,064	452	230
	Total	77,126	75,690	110,607	99,325	113,946	94,754
HISTORIC PARK TOTALS							
	School/Youth	5,263	5,005	5,095	5,308	4,990	4,374
	Casual	9,894	10,118	10,076	9,343	11,170	8,579
	Other	1,147	910	1,398	792	670	355
	Total	16,304	16,033	16,569	15,443	16,830	13,308
COMBINED TOTALS NATURAL ENVIRONMENT, RECREATION AND HISTORIC PARKS							
	School/Youth	17,694	18,387	20,270	17,685	20,258	16,207
	Casual	73,515	71,991	104,907	95,227	109,396	91,270
	Other	2,221	1,345	1,999	1,856	1,122	585
	Total	93,430	91,723	127,176	114,768	130,776	108,062

Table 10: Percentage Change – 2007 to 2008 and 5 year average

	Visitor	Per cent change 2007 to 2008		5 year average		Per cent of change	
	Type	Programs	Participants	Programs	Participants	Programs	Participants
NATURAL ENVIRONMENT PARKS							
Cypress Hills	School/Youth	-22.9%	-31.2%	214	4,781	-16.7%	-30.2%
	Casual	-40.2%	-70.5%	176	20,377	-41.0%	-60.9%
	Other		-100.0%	8	251	-100.0%	-100.0%
	Total	-31.9%	-64.9%	398	25,409	-29.1%	-55.5%
Douglas	School/Youth	-14.3%	-15.2%	5	99	11.1%	29.8%
	Casual	-17.2%	-40.2%	53	1,857	-8.7%	-20.0%
	Other	0.0%	0.0%	0	0		
	Total	-16.9%	-38.8%	58	1,956	-6.9%	-17.5%
Duck Mountain	School/Youth	-41.9%	-40.5%	35	587	2.9%	-21.7%
	Casual	-39.2%	31.2%	120	7,872	-62.4%	67.4%
	Other	0.0%	0.0%	4	90	-100.0%	-100.0%
	Total	-40.4%	26.0%	159	8,549	-48.9%	59.5%
Good Spirit Lake	School/Youth	-42.9%	-49.0%	40	743	-49.5%	-38.3%
	Casual	1.1%	98.9%	78	5,923	22.1%	32.8%
	Other	0.0%	0.0%	1	4	-100.0%	-100.0%
	Total	-10.9%	71.6%	118	6,670	-2.5%	24.8%
Greenwater Lake	School/Youth	-23.5%	-38.8%	35	861	12.7%	-17.5%
	Casual	37.7%	26.0%	68	5,438	8.0%	26.5%
	Other	0	0.0%	1	18	-100.0%	-100.0%
	Total	5.7%	13.8%	103	6,318	8.7%	20.1%
Lac La Ronge	School/Youth	NA	NA	1	31		
	Casual	NA	NA	3	56		
	Other	NA	NA	0	0		
	Total	NA	NA	4	87	-100.0%	-100.0%
Meadow Lake	School/Youth	-5.7%	55.6%	47	1,102	40.4%	38.1%
	Casual	63.0%	12.6%	114	6,613	253.0%	140.6%
	Other			9	22	-100.0%	-100.0%
	Total	47.8%	15.3%	169	7,737	175.7%	125.4%
Moose Mountain	School/Youth	-12.2%	-17.6%	117	1,725	-13.4%	-8.4%
	Casual	134.3%	-13.6%	123	9,925	154.5%	-9.3%
	Other			3	44	-100.0%	-100.0%
	Total	66.7%	-14.2%	243	11,694	70.9%	-9.5%
Saskatchewan Landing	School/Youth	-35.7%	18.5%	20	525	-11.8%	20.8%
	Casual	33.3%	145.1%	58	3,248	107.6%	54.2%
	Other			15	157	-93.4%	-89.8%
	Total	17.8%	119.5%	93	3,930	48.8%	44.0%

Table 10: Percentage Change – 2007 to 2008 and 5 year average (continued)

	Visitor Type	Per cent change 2007 to 2008		5 year average		Per cent of change	
		Programs	Participants	Programs	Participants	Programs	Participants
Sub Total	School/Youth	-22.5%	-21.6%	513	10,453	-9.6%	-15.5%
Natural Environment	Casual	30.0%	-10.9%	792	61,310	51.5%	9.8%
	Other	-90.9%	-95.7%	40	586	-97.5%	-97.3%
	Total	8.6%	-12.7%	1,345	72,350	23.8%	5.3%
RECREATION PARKS							
The Battlefords	School/Youth	NA	NA	0	0		
	Casual	NA	NA	0	0		
	Other	NA	NA	0	0		
	Total	NA	NA	0	0		
Buffalo Pound	School/Youth	27.3%	24.6%	41	1,080	35.3%	2.6%
	Casual	36.0%	25.9%	113	8,629	7.1%	-21.7%
	Other	-100.0%	-100.0%	3	76	-100.0%	-100.0%
	Total	30.1%	24.9%	157	9,785	12.6%	-19.6%
Echo Valley	School/Youth	-13.1%	-4.0%	59	978	-9.6%	4.7%
	Casual	32.7%	-61.2%	88	4,420	-25.8%	-39.3%
	Other	-66.7%	568.8%	3	42	-68.8%	407.1%
	Total	5.3%	-51.1%	149	5,440	-20.3%	-27.9%
Pike Lake	School/Youth	-53.3%	-57.5%	89	1,215	-20.2%	-28.5%
	Casual	-50.3%	-38.0%	118	6,370	-33.7%	-6.7%
	Other			1	21	-100.0%	-100.0%
	Total	-51.8%	-41.4%	207	7,607	-28.2%	-10.4%
Rowan's Ravine	School/Youth	NA		0	0		
	Casual			4	157	-100.0%	-100.0%
	Other	NA		0	0		
	Total	NA		4	157	-100.0%	-100.0%
Recreation Parks	School/Youth	-30.0%	-25.0%	189	3,273	-4.8%	-8.3%
	Casual	-16.7%	-32.1%	323	19,577	-18.2%	-21.4%
	Other	-83.3%	181.6%	7	139	-85.3%	53.7%
	Total	-23.3%	-30.4%	518	22,989	-14.2%	-19.1%
COMBINED TOTAL NATURAL ENVIRONMENT AND RECREATION PARK							
	School/Youth	-24.8%	-29.0%	702	13,727	-8.3%	-13.8%
	Casual	18.1%	-15.8%	1,115	80,887	31.3%	2.2%
	Other	-88.2%	-49.1%	47	725	-95.7%	-68.3%
	Total	-0.1%	-16.8%	1,864	95,339	13.2%	-0.6%
HISTORIC PARK TOTALS							
	School/Youth	-10.1%	-12.3%	146	5,132	-9.0%	-14.8%
	Casual	NA	-23.2%	0	10,120	NA	-15.2%
	Other	-58.3%	-47.0%	36	983	-58.8%	-63.9%
	Total	-19.6%	-20.9%	181	16,236	-18.4%	-18.0%
COMBINED TOTALS NATURAL ENVIRONMENT, RECREATION AND HISTORIC PARKS							
	School/Youth	-22.6%	-20.0%	848	18,859	-8.4%	-14.1%
	Casual	18.1%	-16.6%	1,115	91,007	31.3%	0.3%
	Other	-67.9%	-47.9%	82	1,709	-79.3%	-65.8%
	Total	-1.7%	-17.4%	2,045	111,575	10.4%	-3.1%

LEASES



COMMERCIAL, CAMPGROUND AND COTTAGE LEASES

Tables 11 and 12 summarize the number of leases issued to private individuals allowing them to operate commercial facilities, campgrounds and day use areas within the provincial parks system.

A total of 85 summer commercial leases were in effect for facilities and services such as rental accommodation, stores, fast food services, boat rentals, riding stables and miniature golf courses. There were 38 commercial leases for campgrounds and/or day use areas in recreation sites and provincial parks.

Table 11: Summer Commercial Leases within Provincial Parks and Recreation Sites

Location	2003	2004	2005	2006	2007	2008
Provincial Parks						
The Battlefords	4	4	4	4	4	4
Blackstrap	1	1	1	1	1	1
Buffalo Pound	2	2	2	2	2	2
Candle Lake	1	1	1	0	0	1
Clearwater River	1	1	1	0	0	0
Cypress Hills	10	9	9	9	9	9
Danielson	1	1	1	2	2	2
Douglas	1	1	1	1	1	1
Duck Mountain	6	5	5	5	5	6
Echo Valley	1	2	2	1	1	1
Good Spirit Lake	3	3	3	3	3	3
Greenwater Lake	5	6	6	6	4	4
Katepwa Point	0	1	1	0	0	0
Makwa Lake	2	1	1	1	2	2
Meadow Lake	15	15	15	15	14	15
Moose Mountain	10	10	10	10	10	10
Narrow Hills	2	2	2	2	2	2
Pike Lake	3	4	4	4	4	4
Rowan's Ravine	6	6	6	6	6	6
Saskatchewan Landing	5	5	5	5	5	5
Recreation Sites						
Amisk Lake- Sawmill Bay	1	1	1	1	1	1
Anglin Lake	1	1	1	1	1	1
Elbow Harbour	3	3	3	3	3	3
Nesslin Lake	1	1	1	1	1	1
Valley Centre	1	1	1	1	1	1
Total	86	87	87	84	82	85

Source: Parks Service, Business and Tourism Services

Table 12: Campground Leases by Park Land Category

Location	2003	2004	2005	2006	2007	2008
Provincial Parks						
Meadow Lake						
Lac Des Iles South	1	1	1	1	1	1
Howe Bay	1	1	1	1	1	1
Sub Total Provincial Parks	2	2	2	2	2	2
Major Recreation Sites						
Besant	1	1	1	1	1	1
Besnard Lake	1	1	1	1	1	1
Bronson Forest						
- Ministikwan Lake	1	1	1	1	1	1
Delaronde Lake						
- Zig Zag Bay	1	1	1	1	1	1
East Trout Lake	1	1	1	1	1	1
Etter's Beach	1	1	1	1	1	1
Jan Lake	1	1	1	1	1	1
Lac Eauclair	0	0	0	0	0	0
Little Bear Lake	1	1	1	1	1	1
McBride Lake	1	1	1	1	1	1
Nesslin Lake	1	1	1	1	1	1
Turtle Lake	1	1	1	1	1	1
Weyakwin Lake						
- Ramsey Bay	1	1	1	1	1	1
Whiteswan Lake						
- Whelan Bay	0	1	1	1	1	1
Sub Total Major Campground Recreation Sites	12	13	13	13	13	13
Campground Recreation Sites						
Big Sandy Lake*****	0	0	0	1	1	1
Big Shell Lake	1	1	1	0	1	1
Bird's Point	1	1	1	1	1	1
Canoe Lake						
- Cole Bay	1	1	1	1	1	1
Cowan Dam	1	1	1	0	0	0
D. Gerbrandt	1	1	1	1	1	1
Deschambault Lake						
- South-east Arm	1	1	1	1	1	1
Dore Lake						
- Michel Point	1	1	1	1	1	1
- Tower Beach	1	1	1	1	1	1
Gordon Lake	1	1	1	1	1	1
Hackett Lake	1	1	1	1	1	1
Little Amyot Lake	1	1	1	0	1	1
McLean	0	0	0	0	0	0
Ness Lake	1	1	1	1	1	1
Piprell Lake	1	1	1	1	1	1
Piwei River	1	1	1	1	1	1
Ruby Lake	1	1	1	0	0	0
Sturgeon River ***	1	1	1	1	1	1
Tobin Lake						
- Carroll's Cove	1	1	1	1	1	1
Wapiti	1	1	1	1	1	1
Sub Total Campground	17	17	17	14	17	17

Table 12: Campground Leases by Park Land Category (continued)

Day Use Area Recreation Sites****						
Cypress Lake	1	1	1	1	1	1
Dagg Creek	1	1	1	1	1	1
Greenbush River	1	1	1	1	1	1
Langenburg	1	1	1	1	1	1
Riverhurst	1	1	1	1	1	1
Saginas Lake	1	1	1	1	1	1
SubTotal Day Use Area	7	7	7	7	6	6
Total	38	39	39	36	38	38

Source: Parks Service, Business and Tourism Services

***new development started in 1999

**** includes: picnic sites, lake access sites and trails

***** reduced to lake access only, no lease in place

Table 13: Cottage Leases in Provincial Parks and Recreation Sites

Location	
Provincial Park	Number of Leases
The Battlefords	42
Cypress Hills	204
Duck Mountain	325
Good Spirit Lake	152
Greenwater Lake	198
Lac La Ronge	254
Meadow Lake	239
Moose Mountain	450
Narrow Hills	95
Pike Lake	135
Saskatchewan Landing	50
Recreation Site	
Lovering Lake	17
Total	2,161

APPENDICES

Appendix One: Multiplier for Campground Visits

In calculating visits for campgrounds, the following multipliers are used for the parks noted. These multipliers are based on the average group size shown on campground reservations/permits in 2003. For those locations where park specific data is not available the average group size is used as the multiplier.

Location	Multiplier
Blackstrap	3.7
Buffalo Pound	3.6
Candle Lake	3.6
Cypress Hills	3.2
Douglas	3.4
Duck Mountain	3.6
Echo Valley	3.2
Good Spirit Lake	3.5
Greenwater Lake	3.5
Makwa Lake	3.5
Meadow Lake	3.6
Moose Mountain	4.0
Pike Lake	3.8
Rowan's Ravine	3.4
Saskatchewan Landing	2.9
The Battlefords	3.4
Emma Lake Recreation Site	3.5
Chitek Lake Recreation Site	3.2
Overall Average	3.5

CAMPING PERMITS	2008 Fee with GST
Group Camping	
Group registration	\$15.00
Per unit	
With Service Centre	20.00
- Electrical	15.00
- Non-electrical	
Without Service Centre	18.00
- Electrical	13.00
- Non-electrical	same
Minimum charge	
School/Youth groups per night (GST exempt)	1/person
Seasonal Camping	
Full season	
With service centre	
Fully Serviced	\$1,020.00
Electrical	830.00
Non electrical	540.00
Without service centre	
Electrical	710.00
Non electrical	420.00
Pro-rated	
With service centre	
Electrical	540.00
Non electrical	410.00
Without service centre	
Electrical	470.00
Non electrical	330.00
Monthly	
Level One*	
With service centre	
Electrical	465.00
Non electrical	350.00
Without service centre	
Electrical	410.00
Non electrical	290.00
Level Two*	
With service centre	
Electrical	310.00
Non electrical	230.00
Without service centre	
Electrical	250.00
Non electrical	175.00
* Levels are determined by the park based on location/services/facilities.	
Pro-rated season dates may be amended by operational procedure	