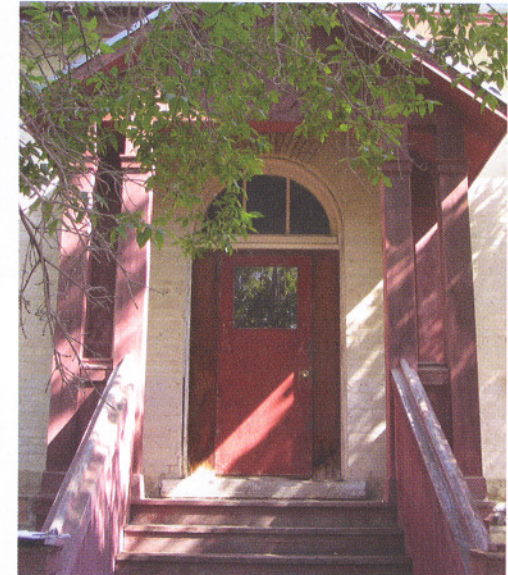


# Wolseley Court House

Wolseley



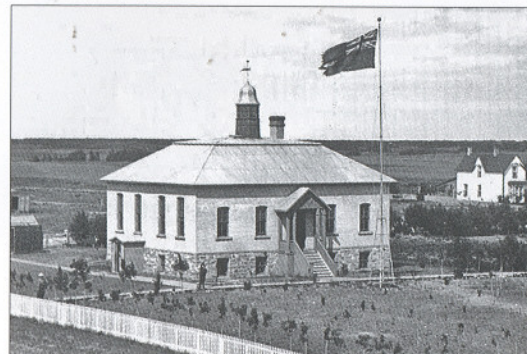
West view of the  
Wolseley Court House (left)  
Photo: C. Fehr



Front porch and entrance (above)  
Photo: F. Korvemaker

The Wolseley Court House is the oldest existing court house in Saskatchewan, and the only one built during the period of Territorial Government. Designed under the direction of Thomas Fuller, Chief Dominion Architect, the building was constructed between 1894 and 1895 to serve the judicial district of Eastern Assiniboia.

Following its closure as a court house in 1909, the building was used as a jail and as a boys' detention home until 1921, when it became an annex to the newly constructed home for the infirm. The original metal flagpole still stands south of the building.



The Wolseley Court House shortly  
after its construction in 1885 (left)  
Photo: Saskatchewan Archives Board,  
RA-3974